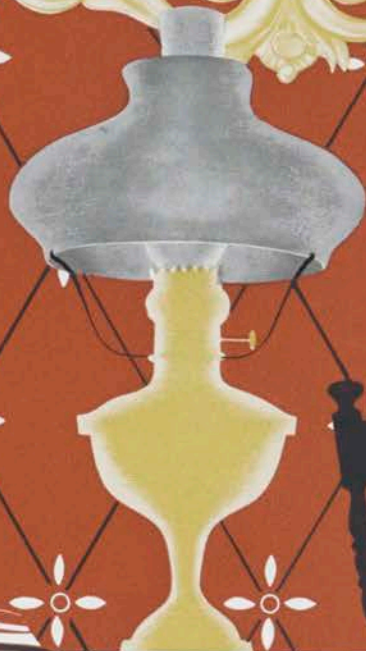


ARROWHEAD



The Story of Kauri

Winter, 1961



FLETCHERS

In a transaction involving £NZ1,500,000 Fletcher's purchased substantially the whole of The Kauri Timber Company Limited's (K.T.C.'s) New Zealand assets, and this arrangement took effect as from 1 July, 1961. Details of some of the main assets and interests involved are set out at the end of this article.

Fletcher's associations with K.T.C. go back over 40 years when K.T.C. were the suppliers to Fletcher Construction for the Auckland City Markets in 1916. Since then relations have been close and friendly, and although the two organisations have been competing one with the other in merchandising of timber and builders' supplies, we have also ventured together in plywood and particle board manufacture.

Obviously this important purchase will mean some re-organisation of our now combined interests. Full details of this will have to be left over to another issue, but I can say that we intend to maintain the Kauri organisation as a separate entity, trading under the name of 'The Kauri Timber Company (New Zealand) Limited'. In this issue I particularly wish to welcome the 900 K.T.C. employees to the Fletcher team and at the same time record a little about K.T.C.'s history, its long and very considerable association and contribution to the New Zealand timber industry.

The kauri (*Agathis australis*) is probably the best-known tree in the South Pacific area and can be found in the northern part of New Zealand, in Fiji and New Caledonia, and many other Pacific islands.

FLETCHER

Arrowhead

Published by Fletcher Holdings Limited, Great South Road, Penrose, Auckland, New Zealand.

WINTER

1961

take over 'KAURI' interests in New Zealand

While originally it was much sought after by the early mariners for masts, spars and general ship construction, it is an ideal timber for building, joinery, and panelling.

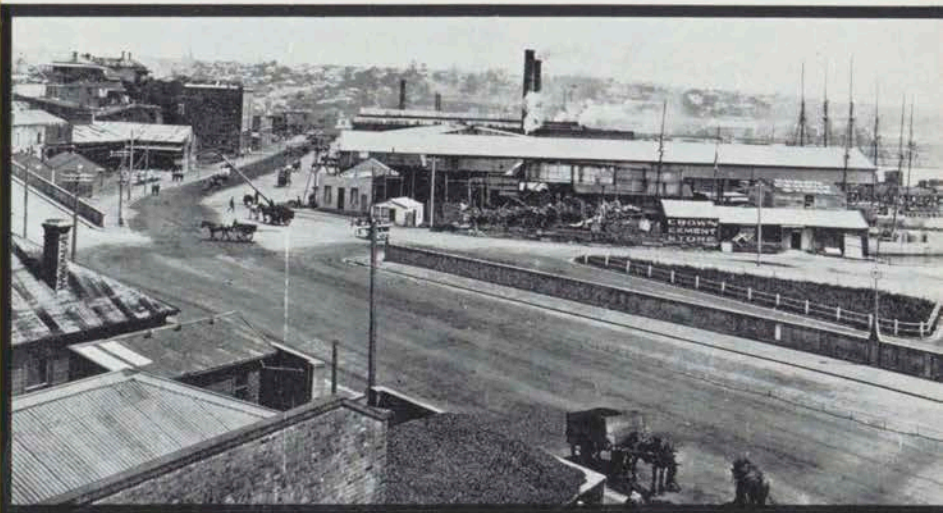
Many of New Zealand's older houses, including my own, were built entirely of kauri, which, though relatively soft and workable, has wonderful lasting qualities.

The first recorded use of kauri by the pakeha was in 1772 when Marion du Fresne, the French navigator, called at the Bay of Islands with his two ships, *Castries* and *Mascarin*, and felled kauris for masts and spars.

The trees themselves are huge by other than North American standards. Kauris of up to 20 feet in girth are quite common and in some cases even exceed 50 feet. Many mature trees grow evenly to heights of 80 feet or more before the first limb is reached.

Australia was and still is short of good building timber, and from the early part of the 19th century regular shipments of this New Zealand timber were made to Australia, as well as to other parts of the world.

The Kauri Timber Company Limited itself was formed in Melbourne in 1888 to take over numerous existing New Zealand sawmills and their other assets which included several steamers, barques, schooners, cutters and barges. At that time the New Zealand timber industry was in difficulties and many of the smaller millers were facing ruin because of uneconomic competition.



The three photographs indicate the growth of the Kauri Timber Company's old Fanshawe Street, Auckland, premises and the surrounding area. Bottom picture shows the city premises prior to the disastrous fire during the last war, after which they moved to Penrose.

The new company was floated with a capital of £1,200,000 in 600,000 shares of £2 each, of which 450,000 were offered to the public and the remaining 150,000 allocated to the vendors of the various mills which were taken over. Twenty-eight sawmills in all were involved and some of the better known were at Mercury Bay, Hokianga, Te Kopuru, Whangarei, Manunui, Whangaroa and Kaihu.

Properties taken over included 146,000 acres of freehold and 256,000 acres of leasehold, estimated to contain 1,600 million feet of timber, mostly kauri.

The *Weekly News* wrote:—

"There will be a fair proportion of the shares reserved for New Zealand, as there is every desire to satisfy the local demand for shares, so that there may be a large amount of local influence. There will be as few changes made in the working of the mills as possible, except to concentrate and economise The object will not be to raise the prices beyond a reasonable profit. No one will begrudge a small advance on the prices of the past two years, which have all but ruined most of the companies."

A later comment read:—

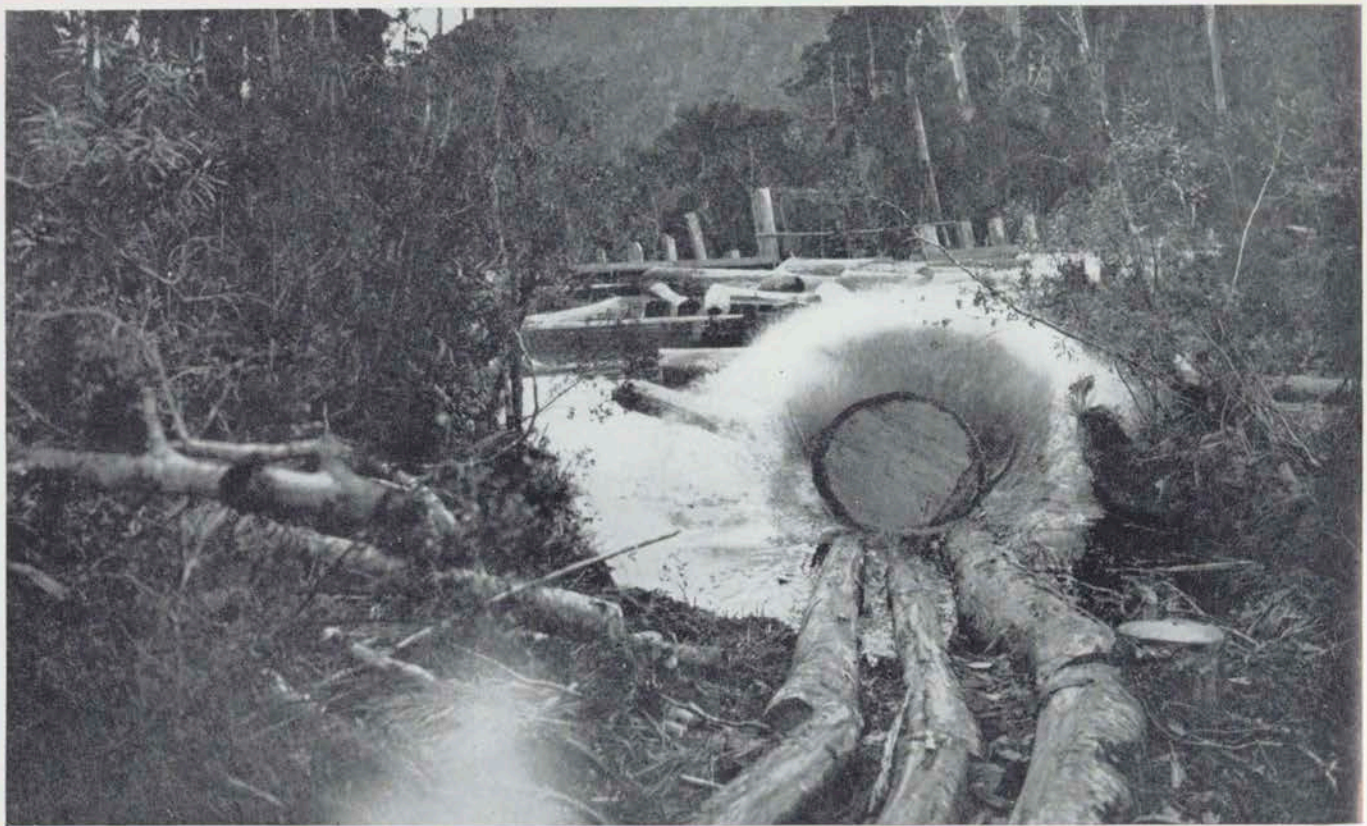
"The operations of the Kauri Timber Company are beginning to be conducted with great activity and vigour. The steamer *Claucus*, which arrived at the Kaipara a few days ago, takes a million feet of timber for Melbourne, and another steamer was to have left the latter port on Monday for the Kaipara, where she

will receive a similar quantity. In addition to these steamers, a number of sailing vessels have been chartered to carry timber, and there is thus every prospect of the great stocks at Aratapu and elsewhere being speedily reduced, and the early resumption of mill operations, which will be welcome news to the workmen who have been temporarily thrown out of employment."

By 1906 it was reported that there were 83 sawmills and other timber processing factories in existence in the Auckland Province, and the number of people employed by Kauri alone amounted to over 5,000. In 1910 K.T.C. was cutting huge quantities of kauri on Great Barrier Island. At Whangaparapara a 900 feet long wharf had been built (see front cover) and 55 million feet of timber was transported to Auckland for milling at their Fanshawe Street premises on the waterfront. Around about this time it was estimated that 2,500 million feet of kauri was still available in New Zealand, but the annual cut was in the vicinity of 70 million feet per year. Thirty years later the average annual cut had fallen to 8 million feet per year and the total resources of kauri by 1950 had fallen to 40 million feet, less than was cut in one year alone at the turn of the century.

Not all of the timber went to Australia. An early estimate, based on an output of 60 million feet, put the New Zealand consumption at 35 million feet with 10 million feet to Victoria, 10 million to New South Wales and 5 million to the rest of Australia.

"The Plunge!" A huge kauri log entering the dam.





"The end of a drive." Five million feet of kauri timber in the booms at Kauaeranga.



Kauri rickers outside K.T.C. administrative offices at McNab Street, Penrose.

Those days have now gone. Kauri is in fact "a protected tree" and the few remaining forests, though still containing many magnificent specimens and millions of feet of timber, only make the tourists' eyes wide and the bushman's mouth water—but they are not for him.

As the supplies of kauri diminished, K.T.C. in New Zealand adjusted its operations to meet the new circumstances and maintained its position in the forefront of the New Zealand timber industry by passing over to other species and other products associated with the building industry.

While we all regret the passing of the kauri as a commercial timber, we have to accept the fact that mankind inevitably uses first the best and most accessible material resources. There could be no such thing as progress if we treated all our raw materials as museum pieces merely to be looked at by tourists and holiday-makers.

It is true that today improved logging and processing techniques, unknown and impracticable 60 or 70 years ago, could have been introduced and would have spun out the life of this timber, but that was not to be. These techniques will, however, enable us to get much greater use and life from our remaining native forests of rimu, matai, kahikatea and other species.

We are very proud indeed to have inherited the traditions of this old and famous company in New Zealand and together we hope to play a larger part, not just in merchandising, but in conserving and using our remaining timber resources with the utmost efficiency.

The pictures on the front cover and on these pages are from original photographs from the archives of K.T.C. in Auckland. I also acknowledge the assistance I have had from that excellent book *The Story of the Kauri*, by Mr. A. H. Reed.

A handwritten signature in dark ink, appearing to read "A. H. Reed".

The K.T.C. assets purchased by Fletchers include interests in numerous companies in various parts of New Zealand, and the following general list is not complete but only covers the major companies involved.

First and foremost are K.T.C.'s Auckland premises and properties whose centre of operation is at Penrose. On this site is their main office for New Zealand, a timber yard, drying kilns, joinery factory, and pre-cut mill. There is a timber yard on the North Shore and at Mt. Eden. At Papatoetoe there is another yard associated also with a builders' supply store. All the above were wholly-owned by K.T.C. Melbourne, and other major wholly-owned companies are:—

Kauri Sawmills Limited: This was previously George Syme & Company Limited and was purchased by K.T.C. in 1945. It operates two sawmills at Edgecumbe, and has branches at Stratford and Hawera.

Kauri (Booths) Limited: This was previously W. Booth & Company Limited which was established in 1909 and purchased by K.T.C. in 1945. Its Wellington premises are in Constable Street, and it also operates a timber business in Carterton.

The major subsidiaries of K.T.C. are:—

Ellis & Burnand Limited: This company originated in 1886 at Orakau near Kihikihi in the King Country, where the late W. J. Ellis established a two-bench sawmill. This small mill was subsequently closed down and J. W. Ellis set up a bigger mill at Otorohanga and shortly thereafter was joined in partnership by J. H. D. Burnand and H. Valder.

In 1903 the partnership was formed into a public company known as Ellis & Burnand Limited, with a capital of £22,000.

In 1904 a new company was formed with a capital of £50,000 in shares of £1 each and The Kauri Timber Company Limited (K.T.C.) acquired 23,700 shares, and the right to nominate two directors. Various changes in the capitalisation of the company have

been brought about since that time and today the capital of Ellis & Burnand Limited is £750,000, and K.T.C. holds just over 50%.

Ellis & Burnand Limited is one of the oldest-established timber companies in New Zealand and has a record of long service among its employees.

It operates sawmills in Otorohanga, Mangapehi, Ongarue and Putaruru and has a retail timber yard, joinery and box factory in Hamilton, where its head office is also located. There is also a retail timber yard at Te Kuiti.

Butler Bros. Limited: Two young Englishmen, William and Joseph Butler, founded Butler Bros. in the early 70's. They operated mills in the North and South Islands and in 1907 purchased 28,000 acres of freehold forest lands in two blocks on the West Coast, one known as Ruatapu and the other as Arahura. In order to operate these large areas they approached K.T.C., and Butler Bros. Limited was formed with a capital of £40,000 in £1 shares of which K.T.C. held 16,000, subsequently increasing its holdings to over 23,000 shares. A marketing subsidiary known as The Butler Timber Company Limited was formed early in 1927.

Stuart & Chapman Limited: This is another very old-established West Coast sawmilling company, formed in 1901 by John Chapman and David P. Stuart. In a re-organisation of the capital structure of the company in 1915 Kauri took up two-thirds of the shares, but Kauri's interest was subsequently taken over by Butler Bros. Limited. In 1947 Stuart & Chapman acquired a controlling interest in the old-established Dunedin firm of timber merchants, A. V. Haddock Ltd., subsequently renamed Otago Timber Company Limited.

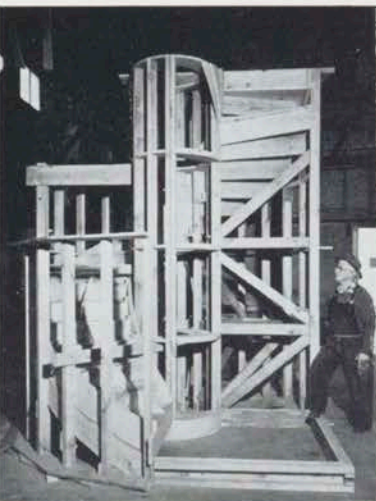
"The Beginning" . . . Te Kopuru, from an old K.T.C. photograph.





Rare decoration conferred on Mr. L. J. Stevens

Mr. L. J. Stevens, Deputy Chairman of Directors of Fletcher Holdings, and Danish Consul in Auckland, recently had the honour of being conferred with the rare decoration of Knight of the Royal Order of Danneborg. Also with Mr. Stevens in the picture are his sister, Miss Mary Stevens, and the Danish Charge d'Affaires, Mr. T. Wegener-Clausen.



Apprenticeship Training Scheme

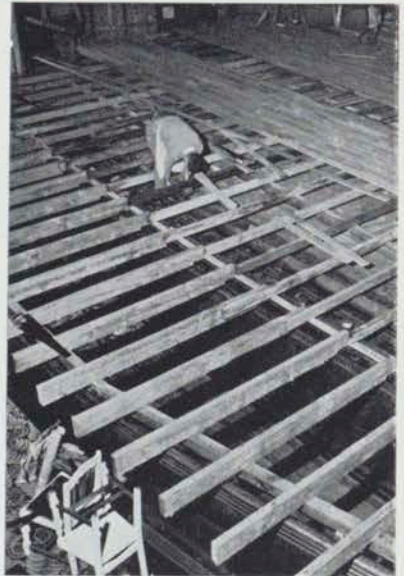
Jimmy Littlejohn, now in charge of our apprentices in the Wellington area, shows the intricacies of the staircase which he has just been completing. Jimmy's views on apprenticeship were recently published in Wellington's 'Dominion' and were also given at a meeting of our apprentices, held earlier in the year. This meeting was almost 100% attended and was also addressed by Messrs. Redwood and Katene, both Government officials.

Our Alex. Marks in front page news photo (below)

This photograph which appeared recently in the centre of the front page of "The Manchester Guardian" showed Mr. Krushchev touring the British Trade Fair at Sokolniki Park, Moscow. Alex. Marks, our London Manager, is immediately behind Mr. Krushchev, wearing dark-rimmed glasses.

Ballet stage erected in record time

Recent temporary alterations to the stage of the Playhouse Theatre, Auckland, required a new extended 1400 sq. ft. floor to be built between last film performances and first rehearsals next day. At 4.30 p.m. the foreman Laurie Baldick and his men commenced and, 14 working hours later, had the stage ready for the N.Z. Ballet Trust Company's rehearsals.



THE GUARDIAN

Manchester Saturday May 20 1961





*new premises for
Fletcher Construction, Auckland*

After operating for years in cramped and difficult conditions, the Auckland executive and administration branch of Fletcher Construction have moved into their new office block. A feature of the interior is the wide-open working area with low partitions providing ideal light and spaciousness. "Brooks Partitions" were employed throughout to provide a suite of individual offices, and small shoulder-high partitions for the various divisions of their operations.





Above.—Auckland executives photographed during a recent discussion. From left: Mrs. Pickford (stenographer), A. W. (Alex) Craig, A. J. (Jock) Lennox, W. J. (Wally) Scott, J. (Jim) Espie.

Top Right.—Contract managers and their staff discussing details relating to a plan. From left: W. T. (Bill) Anderson, R. E. (Bill) Ansted, R. (Ron) Smith, K. O. (Keith) Stewart.

1—C. Hawthorn, K. Powell, M. Kendall (seated), M. D. Trainer, G. I. Clements, S. Goldsmith, B. Hilliam, M. Thompson, H. Campbell (seated), D. Killingback, J. P. Coursey.

2—E. V. Wilson, S. I. McKeown (Chief Quantity Surveyor), R. L. Hutchinson, R. M. Lloyd, J. T. Bell.

3—A. A. Kooiman, G. Fitzgerald, P. W. Hislop, G. White, M. Kempton, J. A. Hay, J. Ross.

4—B. Parr, T. Kerr (Plumbing Manager), N. Pedlar, M. R. Falconridge, R. H. Foster (Contract Manager), T. E. Randle, R. Van Meeuwen (I. & A. Manager).

Opposite Page—
Top.—Exterior of the building, showing the provision for off-street parking under the offices.
Centre Right.—One of the executive offices on the west side.

Lower Right.—A general view of the main office. Brooks Partitions were used throughout.
Lower Left.—The executive offices from the entrance foyer.



recent projects

FLETCHER
construction



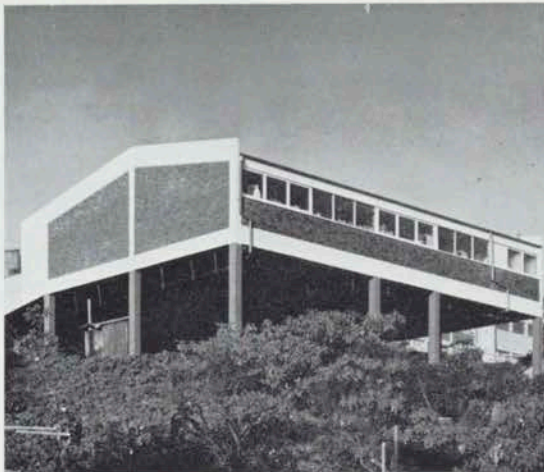
Auckland Harbour Bridge Authorities traffic control tower. Designed to house speed detection and closed-circuit television equipment. Architect: Llew S. Piper; Contract Manager: Bill Anderson; Foreman: Arthur Newton.



E. W. Pidgeon's warehouse and offices, Newmarket, Auckland. Architect: Kenneth Albert; Contract Manager: Bill Anderson; Foremen: Alex Noble and Norm Hansen.



Penrose High School Assembly Hall. Architects: Ministry of Works; Contract Manager: Bill Anderson; Foreman: Trevor Horsnell.



B. E. Carmody Limited warehouse and sample rooms, Auckland. Architect: Mark-Brown Fairhead; Contract Manager: Bill Anderson; Foreman: Pat Sherwood.



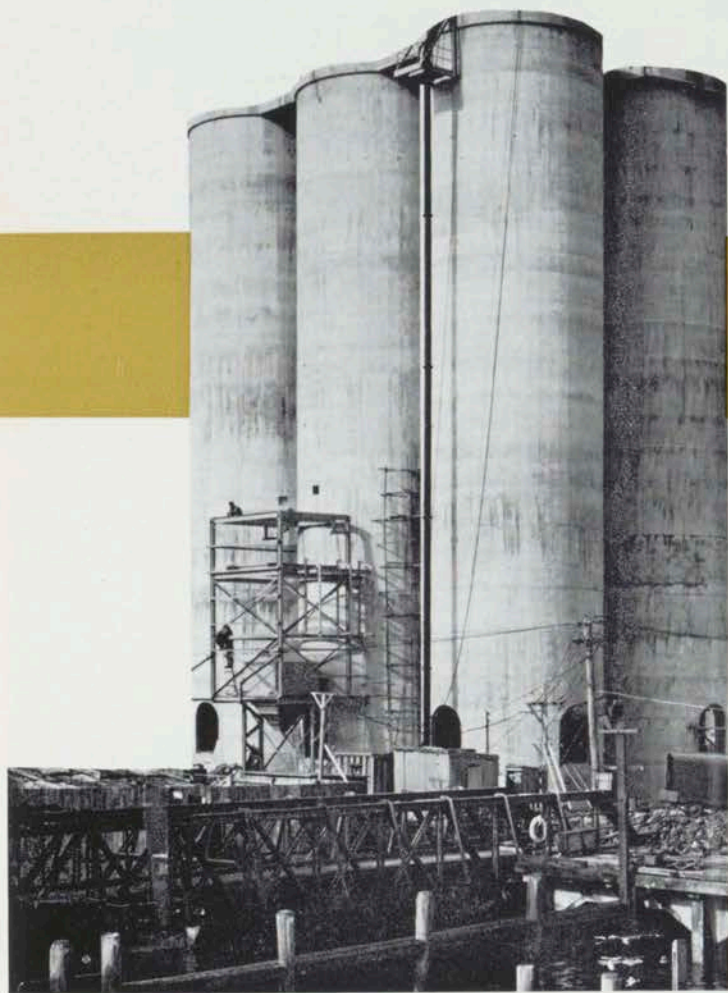
Maple Furnishing Company's Takapuna showroom. Designed by our own Engineering and Design office. Contract Manager: George Bourke; Foreman: Arthur Newton.

at Auckland

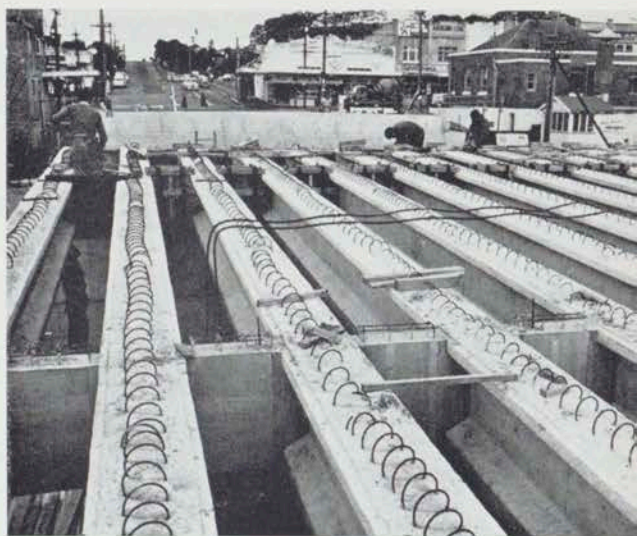
The photographs on these two pages represent a selection of Auckland contracts. Wet conditions again prevailed in Auckland this year but did not create as many delays as was expected. We will be featuring photographs of our major contracts throughout the country in the Christmas issue.



Gladstone Road Overbridge, Mount Albert, Auckland. Securing the boxing prior to the pouring of concrete are Norm. Harmsworth, at rear, and Dave Phillips. Engineers: Harrison & Grierson & Partners; Contract Manager: Bob Foster; Foreman: Tom Edmunds.



Wilson's Cement Silos at Auckland. Architects and Engineers: John Booth, Sweetman & Wolfe; Project Manager: F. Hancock (Downer's); Site Superintendent: George Winckley. This is a joint-venture with Downer's.



A recent photo of the Gladstone Road Overbridge being prepared for the pouring of the concrete deck.

FLETCHER

timber

Roading is a major operation in the



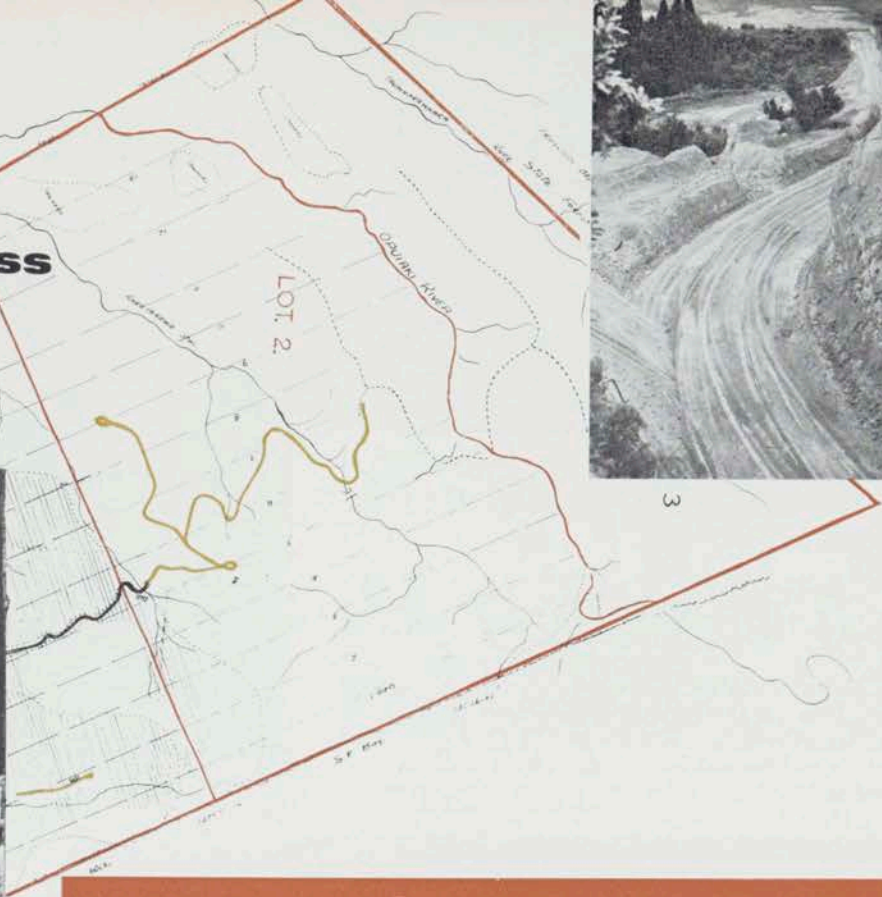
Trees must first be felled, before the roading work begins



The formation of sound all-weather roads for our bush operations is an essential and very major part of Fletcher Timber's activities.

The illustrations on these pages give some indication of the size and variety of the work which is involved. Quite obviously, the cost of roading and maintenance is reflected in the costs of the logs extracted, and in consequence great care must be taken to ensure that the most economical routes are used. These days we often have the value of official aerial surveys such as the one shown above, but generally speaking the road is actually blazed by our own logging superintendents, and the roading gangs follow on their heels. All our own equipment is used for the work—mostly D7 tractors, and our metal (hard road material) gangs are mobile units which include traxcavator and dump trucks.

Timber Business



All sorts of roads . . . for all sorts of weather

Over 80% of our forest roads are useable in all weathers and the metal is usually obtained from pits at the roadside, or from adjacent river beds. In the central North Island, pumice is also used in places where it is readily available.

Most of the land over which we log is the property of groups of Maori owners, and land development schemes for farming usually follow on after the area has been cleared. The pattern of this land development rarely follows the pattern of the bush workings, and often our roads fall into neglect, but in most cases we are obliged, under our agreements, to leave the culverts and bridges in place.

Fletcher Timber has constructed many miles of roads and has developed a specialist team of operators, whose experience provides considerable skill and economics.



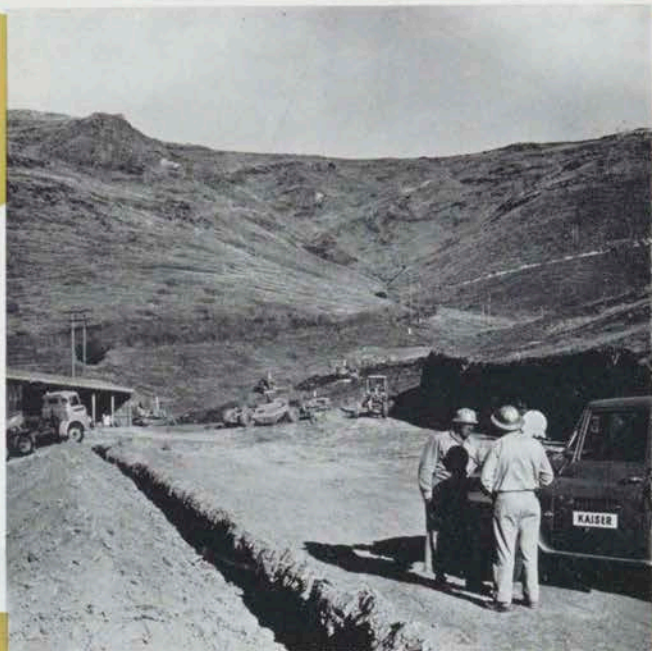
FLETCHER
KAISER

PROGRESS WITH TWO

... Lyttelton tunnel

first came the sun . . .

The Christchurch-Lyttelton Tunnel project has experienced, as the photographs show—the complete extremities in weather conditions. Work is well under way and the official first shots were fired on September 9th last.



... and then came the rain



MAJOR CONTACTS

. . . Pacific Steel



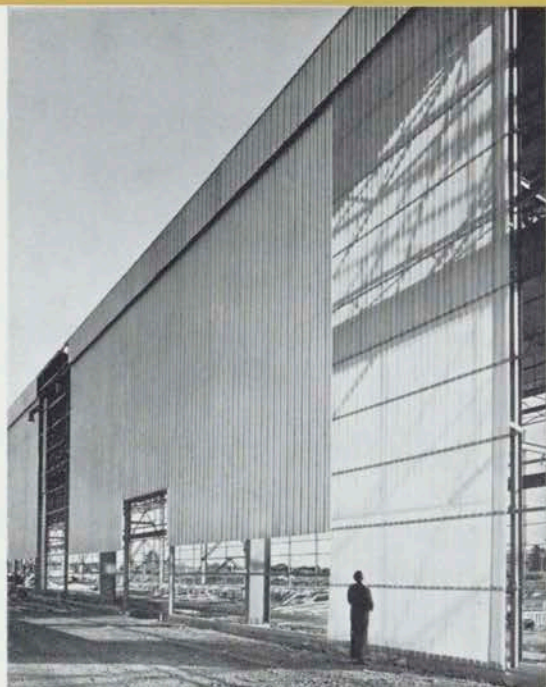
The garage, one of the first buildings erected at the Favona Road site.

Construction of the main building at Pacific Steel's merchant bar rolling mill is now in the final stages. It is anticipated that production of the mill will commence earl next year.

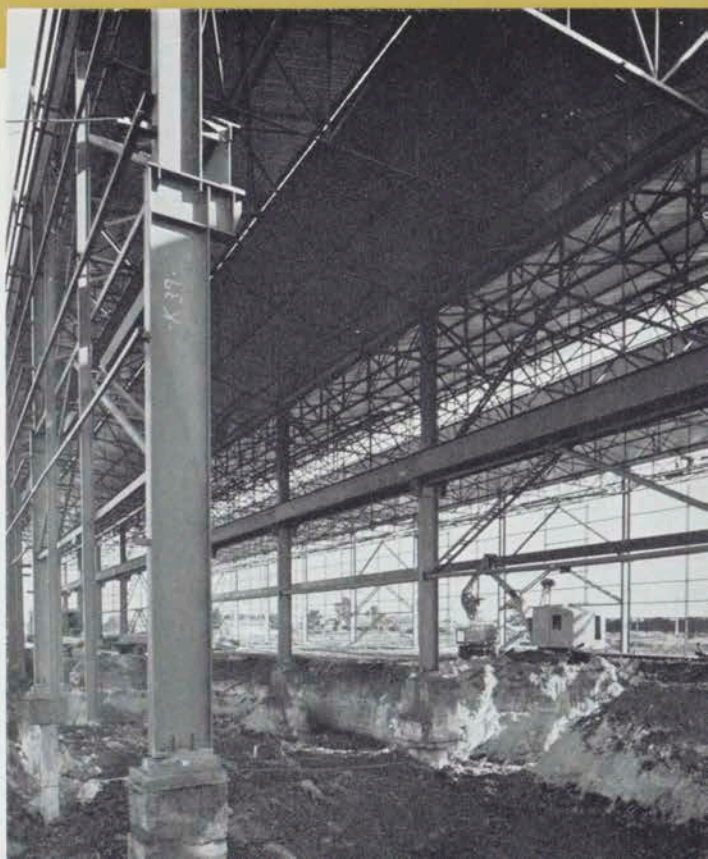


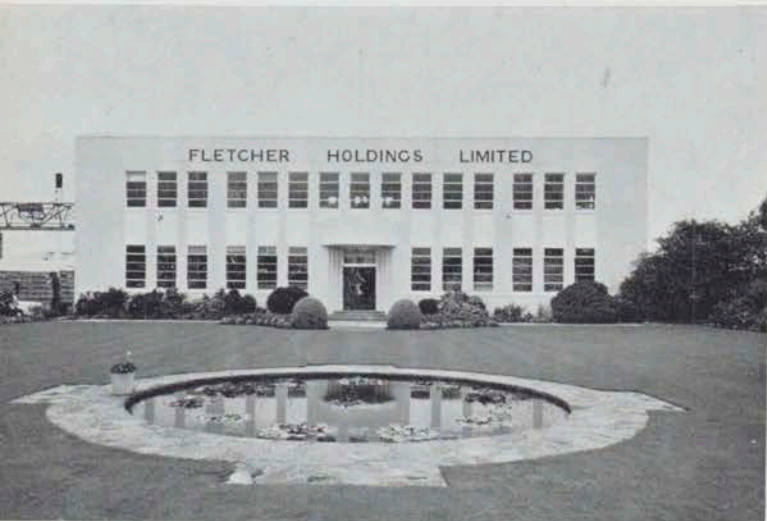
Above.—Steel columns and girders for the melting shop tower 90 feet into the sky.

Below.—Excavations for the motor shop cellar which is in the centre of the rolling mill. The height of the rolling mill building is 57 feet above ground and it is 765 feet long, by 85 feet wide.



An exterior view of the side wall of the rolling mill. Brown-built and Duro-lite have been used throughout for sheathing.





First prize in Factory Gardens' Competition

Once again, Fletcher Holdings' entry in the Christchurch Factory Gardens' competition has captured the top award. The gardens were beautifully prepared and looked the peak of perfection.

LIFE INSURANCE BOOKLET PUBLISHED

Recently a small two-colour booklet was published and distributed to all members of the staff, which set out in detail, the full information relating to staff Life Insurance and Superannuation Schemes. We wish to bring it to the notice of the staff once again as a final reminder, that they are fully entitled to a copy of this brochure and requests for such should be made to their local manager.



FLETCHER'S

LIFE INSURANCE & SUPERANNUATION

The Company operates two excellent schemes of Staff Insurance and Superannuation both of which are of considerable benefit to employees. One is the recently introduced Life Insurance Scheme which provides a cover of £3000 per year. The other is the Superannuation Scheme "C" which has already paid out in benefits, in excess of £25,000.

This booklet has been prepared so that the exact details of both Schemes can be clearly set out for all employees to read for themselves. Appropriate forms for both Schemes are in a perforated section at the rear and all employees are strongly recommended to read the conditions and make the necessary applications.

The Superannuation Scheme is completely free. The Insurance Scheme (for purely taxation reasons) merely releases a payment of a few shillings annually.

Ericson John List awarded the first James Fletcher Scholarship

The James Fletcher Postgraduate Scholarship in Engineering for the Auckland area was awarded to Ericson John List of the Ardmore School of Engineering. The grant is worth £250 per year.

Shortly after the award was made, John List, accompanied by Professors Bogle and Mowbray, came to Penrose and joined Sir James and other directors for lunch in the Board Room.



CYCLING AROUND NEW ZEALAND

— prior to joining Fletchers

Hans Aalders, nephew of Tony Aalders the cafeteria manager at Penrose, Auckland, spent 68 days on the road recently, discovering New Zealand. Hans joined the staff of Fletcher Steel at the conclusion of his tour.



FLETCHERS REPRESENTED AT TRADE FAIR

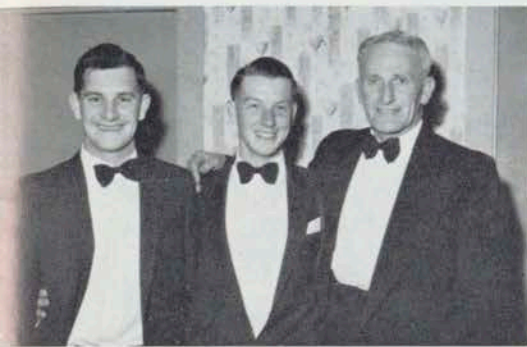
The photograph shows a model of the Fletcher Industries stall at the recent New Zealand International Trades Fair. The impressive display featured a 20 feet high "Brownbuilt" tower that was fabricated in Auckland and transported to the site. The exhibit was created, manufactured and installed entirely by Fletcher staff.



*a night
out . . .*



AT THE AUCKLAND BALL



Some candid photographs taken at the Fletcher Holdings Ball held at "Sorrento" on Friday, 11th August. A gathering of approximately 180 attended. Names of the better-looking ones on request, accompanied by a 5/- postal note.



Personalia



AUCKLAND

WELCOME: Jack Lord (H.O. Acct.), Jack Swift (back from Steel), Bert Hough (Timber); Beverley Clark, Ann O'Reilly (from Industries); O. F. Whiteman (Holdings); Peter Metcalf (Lab. Asst., Plywood); George Johnston, Les Provan, Carl and Shea O'Brien, Cheryl Lee, Margaret Price, Joy Eldon (Hardware); Jack Brown, Brian Parr, Wally Hislop, Hilda Campbell, June Ross, Maureen Kempton, Kathy Powell, Sheila Goldsmith, Beryl Hilliam, Gladys White (Construction). Ann Montague, Gladys Brazier, Phyllis Tollafield, Robyn Browne, Pat Calvert, Pat Brennan, Janice Earles, Yvonne Thompson, Max Knight, Buff Boyd, Cliff Dawson, Lew Purdie, Harry Fenton, Bruce Gollan, Darkie Willoughby, Reg Harford, Hans Aalders (Steel).

TRANSFER: Noel Rugg to Group Services.

MARRIED: Robin Patchett (Timber) to David Tear; Ralph Newton (Plywood).

BIRTHS: Sons—Bruce Burrows (Hardware).
Daughters—Grant Stilwell (Hardware).

APPOINTMENTS: Bill Rowe, Deputy Secretary, Holdings; Bill Adam, Sales Manager, and R. P. Goddard, Accountant, Hardware.

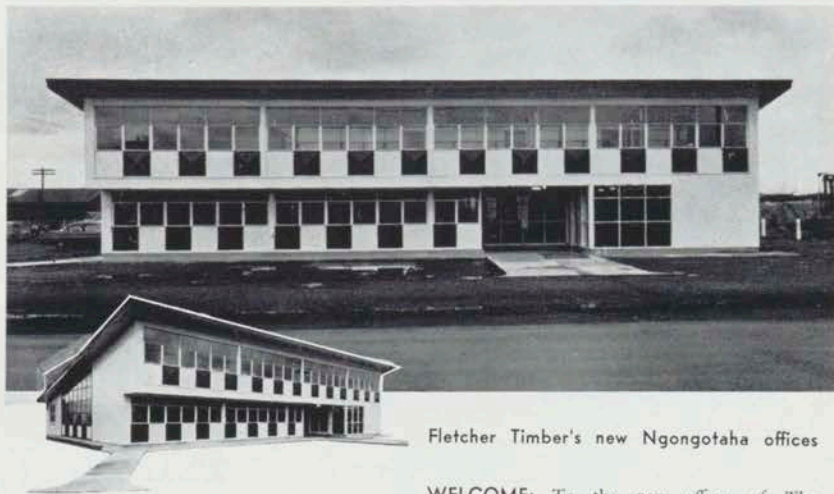
RETIRED: Jim Patterson (Plywood) after 20 years. Ray Cole (Hardware).

SPORT: Graham Leach got his Blue for Water Polo. Mrs. Viti Gibson (Plywood) represented N.Z. in Fijian hockey tour. Oarsmen Rod Hutchinson and Les Arthur (F.C.C.) selected for Empire Games training squad.

INVALIDS: Joe Murphy (Holdings) is progressing well after an operation.

AUSSIES: During April, Jim Espie and Laurie Heron went to Australia to recruit staff, many for Fletcher Construction. Welcome to Wallabies:

Fletcher Construction.—A. Harland, A. W. Blackhall, R. A. Whitter, S. Lawton, N. B. Raward, R. K. Williams, R. Cummings, W. J. Gallagher, R. F. Mills, R. A. McGoldrick, J. R. Mortimer, G. Dirins, B. A. King, F. G. Doherty, B. D. Herrington, P. F. Rowleson, J. O'Connor, J. Collinan, J. J. Keery, J. Murphy, J. McRae, R. Davis, E. W. Page, K. F. McCormick, G. Dinnie, T. Redpath, W. Clark, J. Maxwell, E. Coombes, P. Mayer, E. Radtke, J. E. Firrell, E. B. Koy, P. Howe, A. Robinson, J. Weeks, R. D. Latz, B. F. Deer, T. A. Hussey, S. Bush, J. Wilson, D. Pavier.



Fletcher Timber's new Ngongotaha offices

WELCOME: To the new offices of The Fletcher Timber Company Limited at Ngongotaha. The housing of all administration personnel at Rotorua and Ngongotaha has now been combined in these offices.

We also welcomed Jim Lawry who has taken Dick Perham's job at Ngongotaha. Welcome to TE IKA-A-MAUI Jim, we hope you enjoy your stay with us.

BIRTHDAY GREETINGS: Many happy returns to General Manager, Lou Hahn.

SERVICES RENDERED: Congratulations to Les Cann, Bush Superintendent at Ruatahuna on receiving his 20 years service pin (after 24 years of service). Les started in 1937, with Atiamuri Timber Company which was purchased by Te Puke Sawmills, and since then he has moved around a lot at various mills supervising road construction and bush operations.

On 28 March, Roy Baigent our Millwright, reached the age of retirement. At a gathering of the clan in the 'front room' Lou Hahn cited Roy for his outstanding services. Roy has agreed to carry on as usual meantime.

CONDOLENCES: To Alf Porter and his wife and family, at the recent death of his daughter. Also to Arthur Jewell on the recent death of his father.

ROTORUA

WELCOME: Janice Boyd, Colin McCrae (Mill Clerk, Turangi), Peter Coutts, Ted Woods, Hori Barker.

ENGAGEMENT: Len Gee to Lorna O'Brien of Christchurch.

TRANSFERS: Bill Turviel, to 'Tucks' Napier. Mrs. Smyth, wife of the Mill Manager, will take his place at Te Rimu. Stuart Scheib, 'Tucks' Napier, to Rotorua.

BIRTHS: Son—Rau Green. Daughters—Doug Tansley, Roger Hulton, Jr., Bill Wilson.

CONGRATULATIONS: To Arthur Jewell on his promotion to Assistant General Manager, also to our friend Bill Rowe on his promotion to Deputy (Sheriff) Secretary of the Holding Company.

FAREWELL: A large gathering in the "blue room" at Ngongotaha bade farewell to Dick Perham who left to join Odlins, Wellington. W. A. Bourke presented Dick with a fireside chair and Lou Hahn presented him with a wallet and cheque.

WELLINGTON Wisdom

WELCOME: Bob Todd (Timber); John Lee (Industries); David Preddy, Shirley Lee (Construction); Kevin Schollum (I. & A.); Vivienne Croxson, John McCormick (Steel); Joy Stills, Reg Boswell, Ron Kensington, Roy Harrington (Holdings).

FAREWELL: We reluctantly said farewell to our old friend, Miss A. R. 'Bud' Brown, who left us after 16 years to live in sunny Blenheim. 'Bud' was well known to Fletcher folk all over New Zealand, and we wish her all the best.

BIRTHS: Eric Williams (leading hand on Police Barracks contract)—twin daughters. Is there any significance in the fact that Eric's next-door neighbour has quadruplets?

CHRISTCHURCH News

WELCOME: W. T. Cardigan (Acct., Steel), John Druery and Miss Brine (Hardware).

BIRTHS: To Lloyd Childs (Construction), a son.

ENGAGED: B. Wales and S. Smith.

PROMOTION: Congratulations to Ron Bryson, now Manager of F.I.L. Sales, replacing Alan McLean, appointed Manager, Auckland.

RECUPERATING: Mr. and Mrs. J. S. Fletcher are voyaging to Japan and back following Mr. Fletcher's recent illness.

DUNEDIN Diversions

ENGAGEMENTS: Colin Green (Timber).

MARRIAGES: Margaret McLellan (Industries) to Max Rule.

WELCOME: Bill Dobbie, Jim Boyne, Marion Hindle, Meslames Woodford and Miller, and Miss Bates (Industries). Mrs. Wilson, Beverley Loader, Ron Phillips, Lindsay Clark, David Mullenger (Hardware). Peggy Tennent (Steel). Duncan Plunket, Colin Green, Marie Dryden (Timber).

BACK ON DECK: Bob Cummings (Hardware), Leo Ashby (Industries), Jim Leashman (Timber), Miss McMasters (Cafeteria).

TRANSFERS: Graham Leach (Industries) and Ron Cowie (Steel) to Auckland. Jim Lawry to Ngongotaha.

BIRTHS: Sons—Ian McLennan (Steel), Don Jowett, Ron Fahey (Hardware), Ian Deans, Bill Hall (Timber). Daughters—Charlie Thomas, Tom Jopson, Noel Barkman, George

Beckwith (Hardware), Ron Clark, Angus Ferguson (Timber).

PROMOTIONS: Alf Galland (Plumbing) to Supervisor. Ken Briggs (Steel) to Area Manager.

SPORT: Both Brian Evans and Colin Foote (F.I.L.) made the Otago Colts Rugby Team. Annual Christchurch-Dunedin Sports Meeting was held in Dunedin on 9-10 April. 30 visitors made the trip and Sir James was there to encourage the bowlers. Dunedin, led by veteran Sam Warren, was well beaten in a close finish. The Christchurch visitors also won the cricket. Scores: Dunedin 158 (Aim 63, Powell 35, Mussen 4 for 25). Christchurch — (Clarke 54, Donovan 39, Powell 3 for 34, Hall 3 for 19).

After a Smoko on Saturday, Dunedin won the rugby 37 to 3 on the following morning. Special thanks to Bill Peart and 'Shorty' Wray for serving an excellent lunch, and Bill Thomson and Frank Ferguson the Christchurch organisers.

EXAMINATIONS: Vic Sturgeon passed his second stage and Barry Lippert has qualified. Both of Timber.

The Canterbury James Fletcher Engineering Scholarship

In addition to the Scholarship which the company provided for the Ardmore School of Engineering an additional scholarship was provided for the University of Canterbury.

D. J. Woodhams, B.E., of the Department of Chemical Engineering, in the School of Engineering at Canterbury, has won the first award. He is currently engaged in research under the supervision of Dr. Kevin Free of the Dominion Laboratory in the first place and Professor Shemon, Head of the Department of Chemical Engineering.

This work is intended for his thesis for a Master of Engineering Degree. (See reference to Ardmore Scholarship on page 16.)

Sales Training Course held at Wellington

The Fletcher Industries Sales Division once again convened another very successful sales training course. Personnel of various Fletcher Companies from all over New Zealand attended the course which was held at our Hutt Road, Kaiwharawhara premises. Staff who attended included:

THE FLETCHER INDUSTRIES LIMITED

Wellington: Andrew Kefalas, Cliff Ingmire, Don Greenbank, Arthur Osborn. Palmerston North: Sam Marsden, Garth Grocott. Auckland: Bill Weight, Alan Alcorn, Noel Salter, Maurice Lawson, John Simkin, Colin Telfer. Christchurch: Alan McLean, Ron Bryson, Tom Hughes, Alan Morgan. Dunedin: Roy Wells.

THE FLETCHER HARDWARE COMPANY LIMITED

Wellington: Mel Rowe, Jim George, Norm Tutton, Mark Henderson, Tommy Dalgleish, Brian Turner, Graham Hanify, Don Grigg. Christchurch: Alan Warnock, Barry Wales, Clarry Laredo, Ron Cassidy, Don Williamson, Bevan Laws. Dunedin: Frank Harridge, George Beckwith, Bob Hendry.

THE FLETCHER TIMBER COMPANY LIMITED

Wellington: Noel Dalley. Auckland Clarry McLeary.

THE FLETCHER STEEL & ENGINEERING CO.'S LTD.

Wellington: Bill Reidy, Tom Fox, Kevin Bartlett, Ron Mair, Bryan Wynter. Palmerston North: Trevor Donaldson. Dunedin: Ken Briggs. Christchurch: Win Philp, Bert Panter. Auckland: Wendell Phillips, Ken Winton, Jay Menzies, Gray Watson, Cliff Dawson, Alan Carruthers, Bert Bray, Fergus Boyd, Bill Bell.

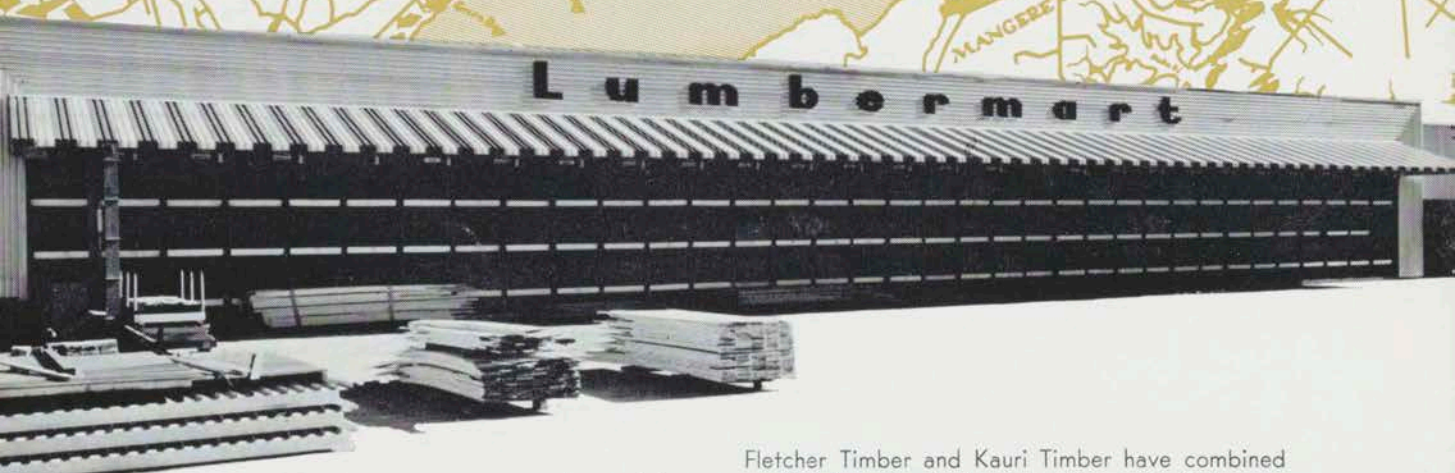




A new service for the home handyman

HANDYMAN

Cut-to-length service



Fletcher Timber and Kauri Timber have combined to provide an unparalleled service to home handymen, in their own localities, throughout Greater Auckland. Cut-to-length timber, delivered for the week-end, can now be ordered through the network of over 80 hardware stores which display the sign of handyman service.

KAURI

FLETCHER

timber