

ARROWHEAD

WINTER 65

"A GREAT DAY FOR THE COAST"

Prime Minister opens Fletcher Industries' new plywood factory at Gladstone

"It is a great day and a great occasion for the Coast", stated the Prime Minister, the Right Hon. Keith Holyoake, C.H., in declaring Fletcher Industries' new plywood factory at Gladstone, Grey County, officially open on April 22.

After describing Fletchers as a "go-ahead virile organisation which had played a tremendous part in the development of industry and housing in New Zealand", Mr. Holyoake said:

"The erection of this factory culminating in this opening ceremony today highlights the confidence of one of, if not our greatest, industrial enterprises — confidence in the Coast and confidence in the future of New Zealand and a great New Zealand. So although one could say much more about this venture and possibilities, I content myself with finally offering my warmest congratulations to Fletchers on the initiative, the imagination, the vision and the drive which they have brought to this centre as they have to so many others in New Zealand".

Mr. R. Aynsley, Chairman of Grey County Council, expressed a welcome on behalf of the County and the West Coast. "By your Company's example and this display of confidence in our future you have done a great service to our people", he said.

The Managing Director of Fletcher Holdings (J. C. Fletcher) who welcomed the guests said:

"We come to Gladstone to see a new unit operating — one that will compare favourably in layout and equipment (although not in scale) with the best overseas plywood mills.

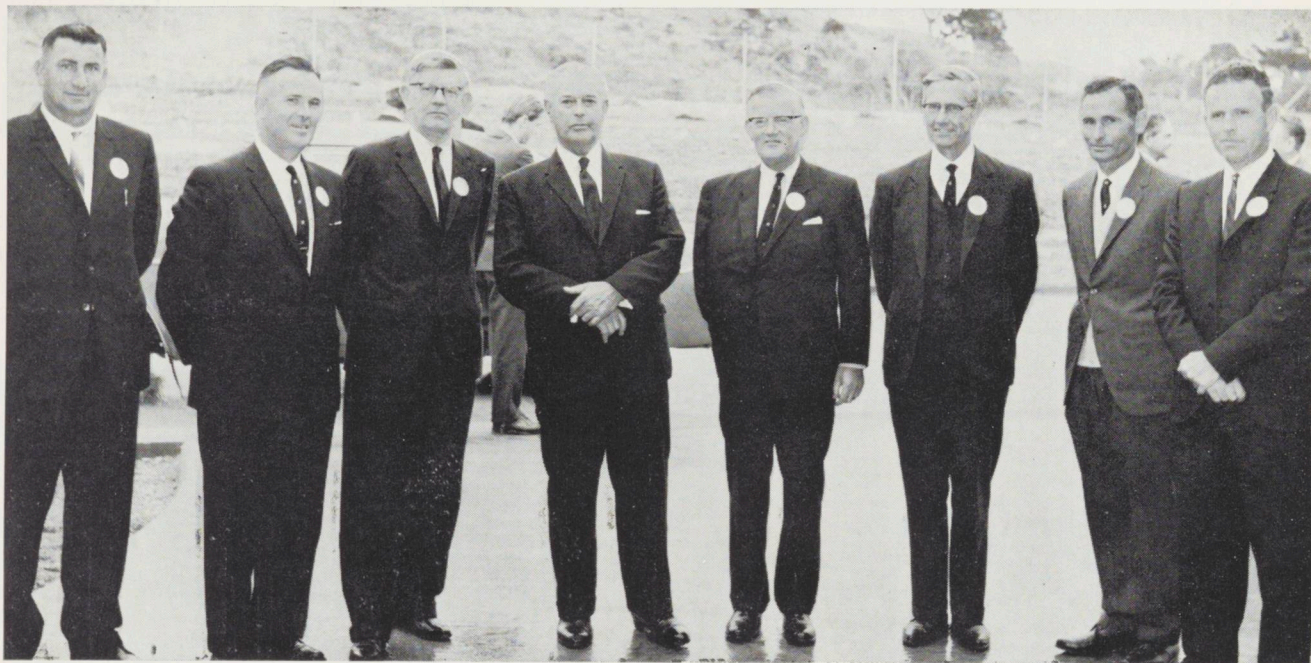
"We have some of the most beautiful timber in the world as our raw material."

"We already have tangible evidence of the goodwill and support of the people of the West Coast and of our new employees who have been drawn to the available limits from the Coast."

"These three factors augur well for the future of this new venture."

If another augury was needed it might be found in the opening function itself, which, to quote the headline in the Greymouth Star, "went smooth as clockwork". Certainly there had been careful planning, but luck was on the side of the organisers. The whole country was dogged by fog during the week of the opening, but at the critical times when guests and senior Fletcher people were flying, there were few delays. The weather which had been fine for days broke an hour and a half before the official opening, but cleared again when the guests began arriving, and it stayed fine.

Of greatest concern was that two of the key figures — the Prime Minister and J. C. Fletcher — might



At the entrance to the factory. From left: The Chairman of Grey County Council (R. Aynsley); T. C. B. Cooper (Director and South Island General Manager, Fletcher Industries); J. S. Fletcher (Director, Fletcher Holdings); The Prime Minister; J. C. Fletcher (Managing Director, Fletcher Holdings); Dr. J. S. Watt (Chairman of Directors, Fletcher Industries); B. A. Henry (Director and North Island General Manager, Fletcher Industries); A. McGregor (Manager, Gladstone factory).

not make the function. But all went well and Mr. Holyoake, who flew by R.N.Z.A.F. plane to Hokitika, arrived at the factory on schedule to the minute. J. C. Fletcher was not quite so fortunate. He was flying from Australia to meet a chartered railcar which would take him and other guests, pressmen and staff from Christchurch to Greymouth. His plane was delayed three hours and he had to make an early morning motor trip to the factory. However he was in plenty of time to meet Mr. Holyoake at the airport. Also meeting the Prime Minister was R. H. Hopgood.

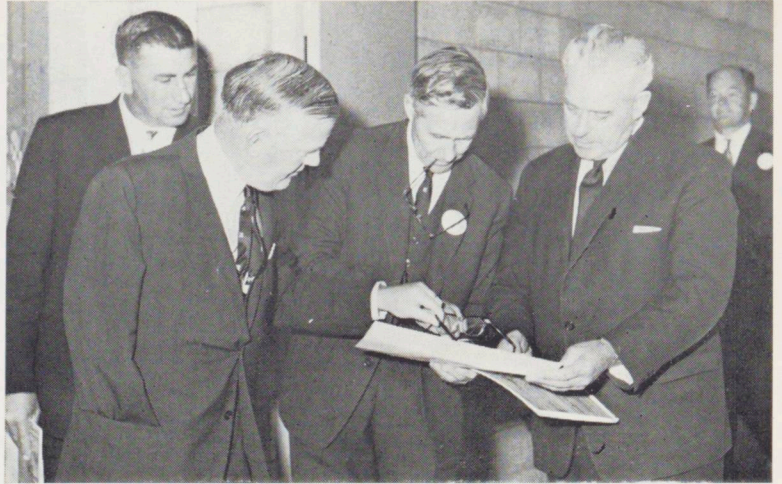
At the factory, guests were met by J. S. Fletcher and R. G. Stark (Directors of Fletcher Holdings), Dr. J. S. Watt, T. C. B. Cooper, B. A. Henry and A. McGregor.

The function was attended by some 250 guests including the Leader of the Opposition, the Hon. A. H. Nordmeyer, the Minister of Health, the Hon. D. N. McKay and other Parliamentarians, Government officials, representatives of West Coast local bodies, logging interests and suppliers and sub-contractors concerned with the building of the factory.

After the official speeches, guests toured the factory and were then entertained at a buffet luncheon. Proceedings closed with Dr. Watt presenting the Prime Minister with a memento of the occasion, a crystal water set and a carved rimu savoury dish — this latter being appropriate to the opening a factory in which rimu is a vital raw material.

Detailed planning of the function and its attendant publicity were the responsibility of T. C. B. Cooper and P. A. Matthews (Advertising and Public Relations Manager, Fletcher Group Services).

Cover block is a photograph of Arthur's Pass en route to Greymouth .



Dr. Watt explains the factory flow chart to the Prime Minister. With them are the County Chairman and J. C. Fletcher (with arm in sling following a recent fall from a horse).



The Prime Minister speaking at the official opening (above), and (below) guests listening to the speeches.

Three



A GREAT DAY FOR THE COAST

FACTORY FACTS

THE origins of the Gladstone factory date back to the West Coast Committee of Inquiry's invitation to Fletchers to make submissions in 1959. Fletchers offered to engage, at their own expense, a firm of consultants to make a fresh objective evaluation of the Coast's industrial potential. The report by Arthur D. Little Inc., of Massachusetts, was submitted to the Committee in September 1960. It concluded that the Coast's forest resources offered the best opportunity for economic development.

After three years of negotiation and planning Fletchers were able to announce in October, 1963, their decision to establish a veneer and plywood factory at Gladstone. Site clearing began in 1963 and construction early in 1964. By March 1965 the factory was fully operative.

It is designed to produce initially 12 million square feet of plywood (on a 3/16" basis) annually. The factory has a floor area of 75,000 sq. ft., and is equipped with the most modern plant available anywhere in the world.

The buildings were designed by Fletcher Group Services (C. W. Hall, Chief Engineer; I. E. Ryland, Engineer-in-Charge), and built by Fletcher Construction (J. G. Smith, Manager, Civil Engineering Division; S. Lucas, Contracts Manager; R. McQuinn, Project Manager).

Fletcher Industries directors and officers particularly concerned with the factory were T. C. B. Cooper; B. A. Henry; G. C. McKay (Production Controller); I. Morris (Site Representative); A. McGregor (Factory Manager); G. J. Shearer (Chief Engineer); G. S. Holmes (Senior Work Study Officer); L. J. Sear and F. Barnes (Technical Officers) and R. F. Leighton.



A bright moment in the factory tour, and (below) watching factory operations: R. H. Hoggood; the Mayor of Greymouth (F. W. Baillie); the Leader of the Opposition (Hon. A. H. Nordmeyer); the Director-General of Forests (A. L. Poole); A. McGregor (Gladstone Manager); the Minister of Health (Hon. D. N. McKay).





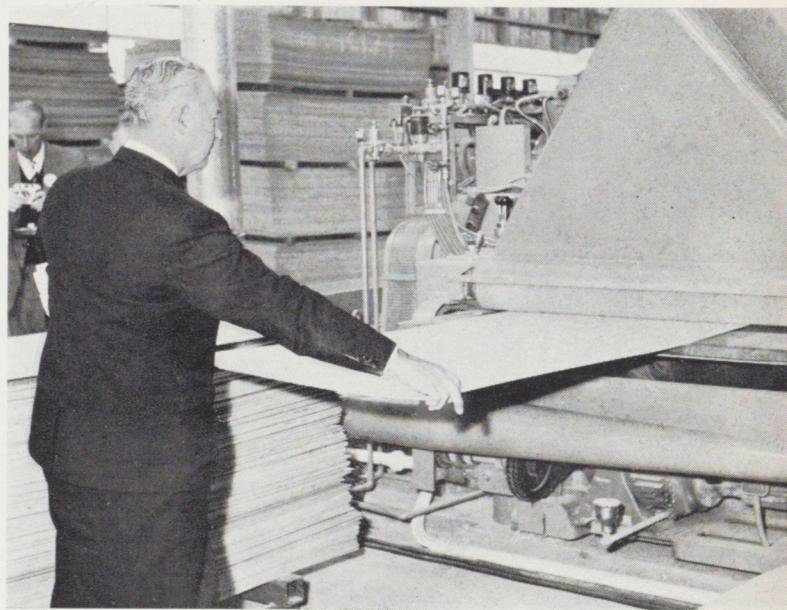
Guests inspecting the log yard (left), and (above), watching operations at the press.

From the Press Editorials

"Today, the eyes of the West Coast are centred on Gladstone — the little community which has received a revitalising shot in the arm — as has the whole province — with the erection of the major plywood factory in that area by Fletcher Industries. The construction of this factory is the first tangible result of years of efforts, plans, sweat and possibly even tears, to provide some industry in a district frightened by a lessening demand for coal and the need for more and more of our younger people to seek employment off the Coast . . . West Coast people will today congratulate Fletcher Industries on their new plant and see in it the realisation of so many on the West Coast's hopes for a bright and bustling future." *The Grey River Argus*

"It is refreshing to reflect that our own faith in the West Coast is shared by an energetic, far-sighted organisation which, in a multiplicity of ways, has made a purposeful contribution to New Zealand overall development during recent decades".

The Greymouth Evening Star



The Prime Minister tries his hand at the sander (above), and (left) the Prime Minister departs. With him are Mrs. Holyoake and their daughter, who were entertained by Mrs. T. C. B. Cooper and Mrs. J. Bissell. Mrs. D. N. McKay, wife of the Minister of Health, was also in this party. Below: At the luncheon. On Mr. Holyoake's right is Captain O. P. McGuigan, of Arahura.



NEW SENIOR APPOINTMENTS

To meet the ever changing, ever-growing demands on management in the Fletcher Organisation a number of new senior appointments have recently been made. None of these appointments involve membership of the board of Fletcher Holdings Limited, which remains unchanged.

Dr. J. S. Watt, Managing Director of Fletcher Industries, becomes Group Technical Director. He is appointed Chairman of the Board of Fletcher Industries and a Director of Fletcher Group Services, Fletcher Timber and Fletcher Steel.

W. A. Bourke, who was Managing Director of Fletcher Merchants, becomes Group Liaison Director. He is appointed Chairman of Fletcher Merchants and a Director of Fletcher Construction, Fletcher Group Services, and Fletcher Trust. He also remains on the board of Fletcher Timber.

L. E. Heron, Industrial Relations Manager, Fletcher Group Services, becomes Group Industrial Relations Director. He is also appointed to the board of Fletcher Group Services.

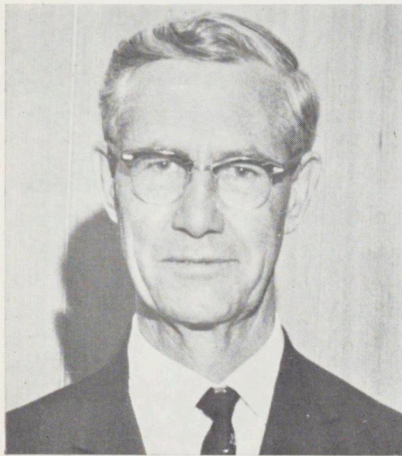
A. W. Craig, Chairman of Fletcher Steel and a Director of Fletcher Construction, is also appointed to the board of Fletcher Trust.

R. H. Hopgood, Development Controller of Fletcher Industries, is appointed Managing Director of the company.

R. H. C. Walshe, Regional Manager, Northern, of Fletcher Merchants is appointed Managing Director.

B. A. Henry, North Island General Manager, Fletcher Industries is appointed a Director.

J. C. Fletcher remains on the boards of all subsidiary companies but relinquishes the chairmanship of Fletcher Industries and Fletcher Merchants.



Dr. J. S. Watt

J. S. Watt was a 1931 Rhodes Scholar and completed his doctorate at University College, Oxford, in 1933. He joined I.C.I. in the U.K., subsequently transferring to I.C.I. Australia and was Assistant General Manager for I.C.I. in New Zealand until he joined Fletchers in 1953. He was appointed Managing Director of Fletcher Industries in 1955. He is a past member of the Council of Scientific and Industrial Research,

Atomic Energy Committee and the Dairy Research Institute. He is also a director of Pacific Steel, G.K.N., Nairn-Williamson, Fletcher Chemicals, Rangi and Lusteroid.



W. A. Bourke

W. A. Bourke joined the company in 1934 and was Managing Director of Fletcher Timber from 1955 to 1963 and Managing Director of Fletcher Merchants from 1963. He is also a director of Pacific Lumber and Kadavu Timber (Fiji) and Ellis & Burnand.



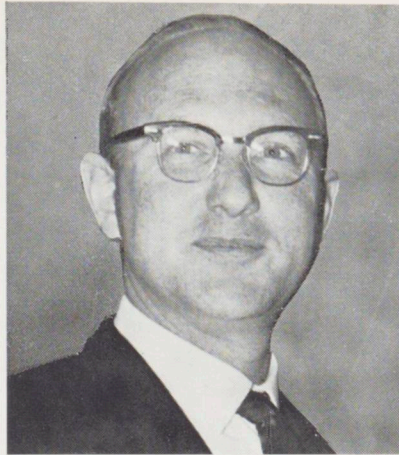
L. E. Heron

L. E. Heron was educated at Auckland Grammar and after 13 years with the Labour Department joined Fletchers in 1954. He has been in charge of industrial relations for the Group and has in addition acted as adviser to associated companies.



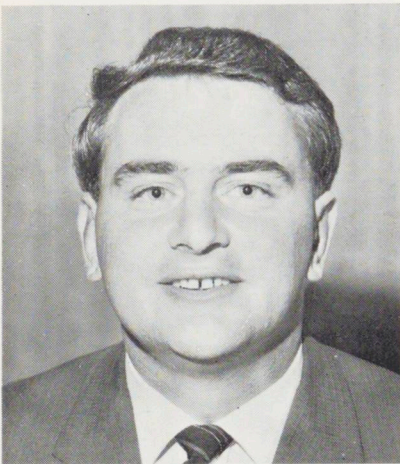
A. W. Craig

A. W. Craig joined Fletchers in 1925. After holding various senior appointments he became Managing Director of Fletcher Steel in 1955 and Chairman in 1959, and was also appointed a Director of Fletcher Construction.



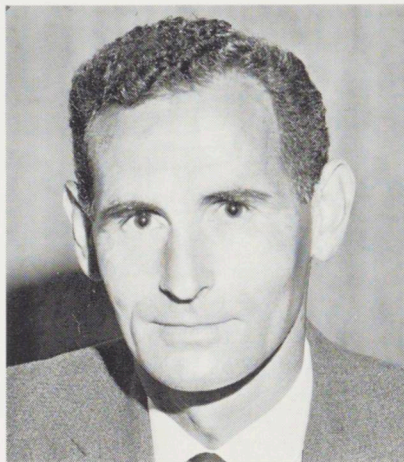
R. H. Hopgood

R. H. Hopgood, who holds the degree of Bachelor of Science (Canterbury), joined Fletcher Industries in Christchurch as a chemist in 1944. He has been closely connected with the company's plywood developments and other manufacturing ventures and has held many executive positions in both New Zealand and Australia.



R. H. C. Walshe

R. H. C. Walshe was born and educated in Dublin where he gained the degree of Bachelor of Commerce and the Diploma of Public Administration at Trinity College. Before coming to New Zealand in 1960 he was employed in Dublin by John Player and Sons, a subsidiary of the Imperial Tobacco Company. In New Zealand he was first employed by the General Motors Acceptance Corporation and subsequently was engaged by Fletcher Timber in Rotorua. When Fletcher Merchants was established in 1963, he transferred to that company.



B. A. Henry

B. A. Henry was educated at Christchurch Boys' High School and Canterbury College School of Engineering and spent six years as an engineer officer in the merchant service. He joined Fletchers in Christchurch in 1953 and since then has occupied engineering and production executive posts. He is at present North Island General Manager of Fletcher Industries and is Chairman of the Auckland Fuel-Users Research Group.

NOTHING WISE — POUNDS FOOLISH

THERE are a number of instances of Fletcher employees "not bothering" to join either of the company schemes which provide a life cover. Inevitably there are unexpected deaths — there was one very recently in Auckland — and dependants, as in this case, are deprived of sums of money which could make a vital difference to their lives after the loss of the family breadwinner.

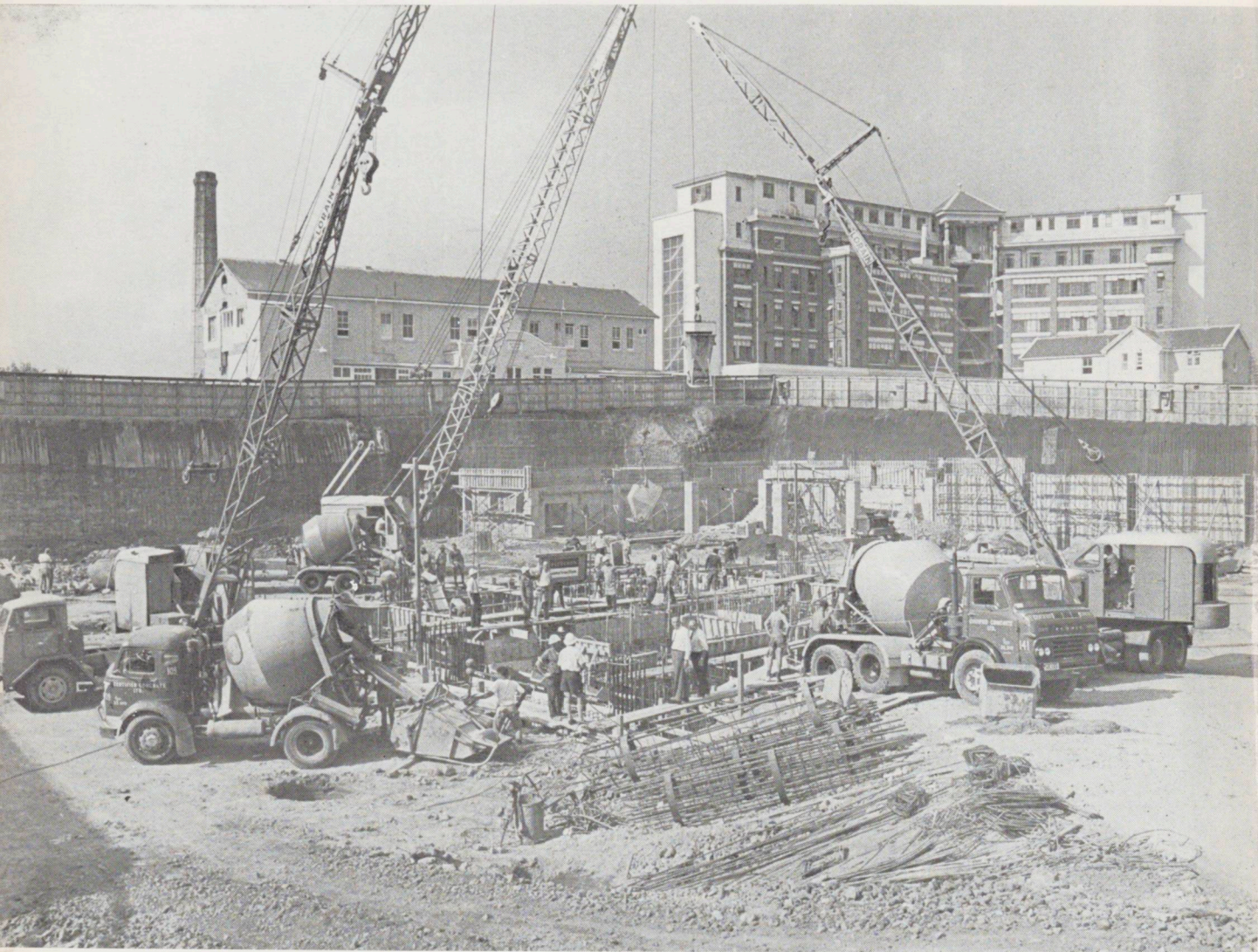
One scheme is the Fletcher Employees Life Insurance Plan which provides for payment of £1500 on the death of a member.

The other is Superannuation Scheme "C" under which there is provision for a death benefit payment of £150 in the case of a single man or in the case of a married man £300 plus £25 for each dependent child under the age of 16 years.

There is no cost to the employee to join the Superannuation Scheme and in the case of the Life Insurance Plan, the only cost is the Social Security Tax on the premium amounting to a few shillings annually. It varies according to the age of the member, but, for instance, a man of 45 pays approximately 9/- a year.

The next entry date is 1 September and applications must be lodged not later than 1 August. Application cards are available from the company accountant or the pay clerk.

THE BIG POUR



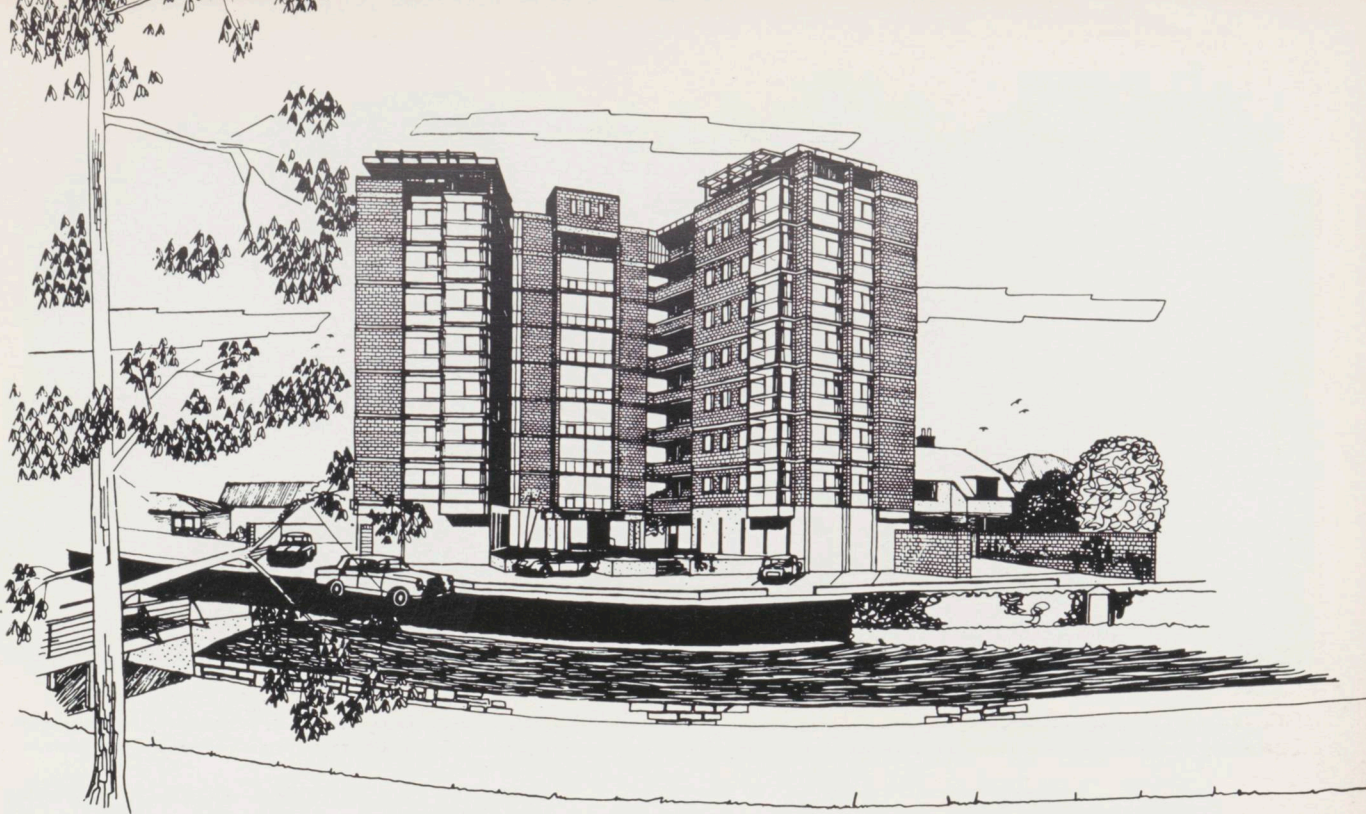
NOT all Fletcher eyes and thoughts on 22 April were on Gladstone. In Auckland the same day, Fletcher Construction was adding to its history with the biggest concrete pour in the area ever carried out by Fletchers or Certified Concrete Limited, the suppliers. This was for the centre core of the foundations of Stage I of the new Auckland Hospital Acute Block at Grafton. The pour began at 6.30 a.m. and was completed at 3 p.m. In the first 15 minutes 60 cubic yards was placed and after two hours 216 yards was in place. The total pour was 607 yards.

The centre core is of cellular construction with reinforced concrete walls ranging from 8 in. to 3 ft. thick to form 20 compartments approximately 10 ft. square. An innovation was that all strongbacks and walers for

the formwork were scaffold tubes combined with the normal form-tie bolts. No movement took place in the boxing anywhere.

The pour was serviced from Certified Concrete's central plant and, as well, at times from their Panmure and North Shore plants. The discharge of the trucks was from six points, three of which were serviced by cranes and the remainder by gravity flow. Eight vibrators were in constant use while the pour took place.

This hospital contract is worth approximately £3,700,000. Architects are Stephenson and Turner. W. T. Anderson is Fletcher Construction's Contract Manager, Charlie Clews is Project Manager and Johnny Davis is General Foreman.



FIJI blowing down

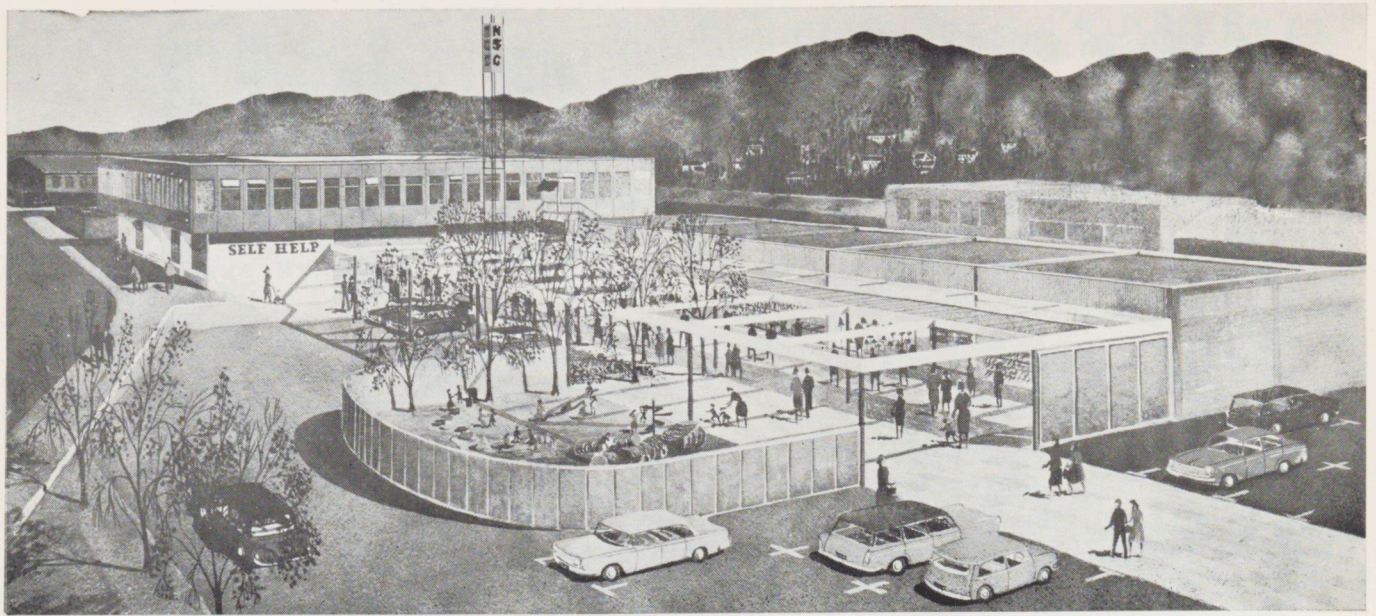
PACIFIC LUMBER received a battering in Fiji's February hurricane. The workshop (shown here) lost its roof and doors and the equipment was soaked, 25,000 ft. of timber was blown off the stacks and there was something like £3000 worth of damage done to stock in store. Electrical plant was drenched and there was damage from wind or rain to other mill buildings and staff housing. All telephone lines were brought down and culverts and crossings washed out. During February there was a record rainfall of 48 inches — 17 inches of it in 24 hours. However as the result of the efforts of Colin McLeod and his staff the plant was back in full operation within three days.

Nine

going up CHRISTCHURCH

Millbrook, a nine-storey block of 37 apartments which Fletcher Construction is building for Williams Property Development Limited. The approximate value of the building is £200,000. This is the second recent contract for Williams Property Development. The other — Rolleston Court — was reported on in Christmas Arrowhead. On both these Christchurch jobs the Architect is D. E. Donnithorne, the Engineer, I. L. Homles and Fletcher's Foreman Dave Campbell.



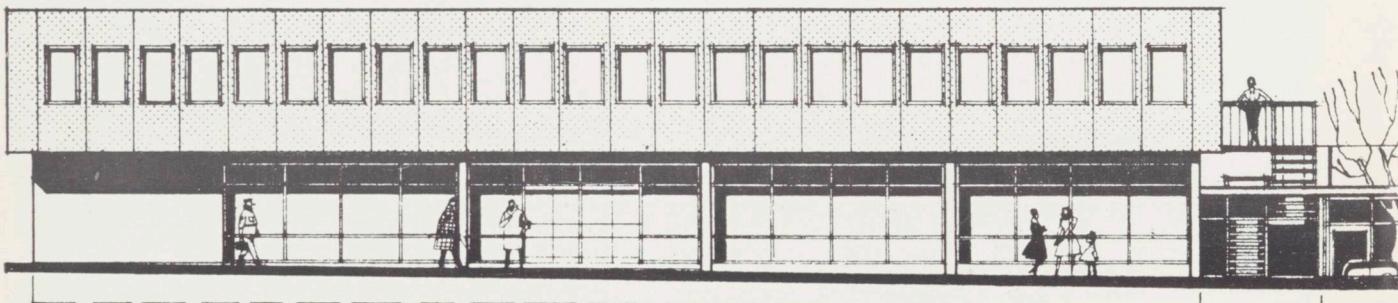


SHOPPING

Fletcher Trust is at present considerably
 developments — with one small centre completed
 a medium-sized ce

NELSON

Drawings of a shopping centre and office block in Nelson are shown above and at the foot of this page. The building is to be constructed on the site (bounded by Hardy, Kerr, Gloucester and Oxford Streets) which has been occupied for more than 60 years by J. D. and L. Robertson, who are in consequence moving to Tahunanui. The Nelson project will consist of a large supermarket and five smaller shops, all facing on to an attractive mall. Parking is being provided for 126 cars, and there will also be a shoppers' pick-up area which will service nine cars at a time. The first floor area is for offices. The approximate value of the project is £200,000. The architects are Burren and Keen of Wellington.





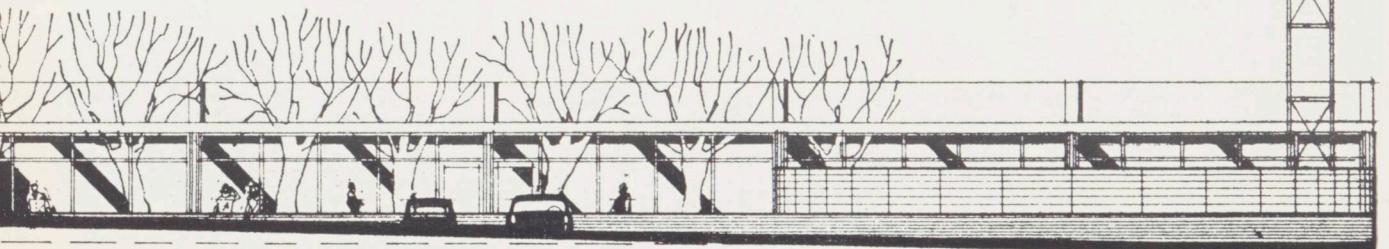
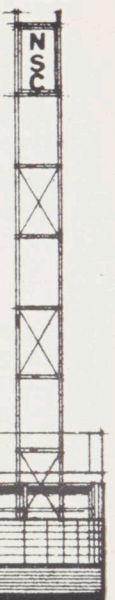
CENTRES

involved with shopping centre develop-
 one large centre nearing completion and
 tre just beginning.

SOUTHDOWN

This shopping centre (shown above) on Fletcher Trust's Industrial Estate at Southdown, just south of Penrose opened in February. A £50,000 project, it consists of a butcher's shop, a grocery, a fruit and vegetable shop, a crockery shop and a cafeteria. The sales theme of the group is "Single items at bulk prices" and it is believed to be the first centre of its kind in the Southern Hemisphere, although similar "wholesale-retail" establishments have been successfully established in North America and Europe. Since it opened it has enjoyed excellent patronage. Southdown was designed by Fletcher Group Services.

Continued on page 12.





PAKURANGA

This million-pound-plus project will be New Zealand's biggest regional shopping centre. Opening date for the whole centre is September. Meantime in May, Foodtown's 20,000 sq. ft. supermarket was opened. It is one of the four main shops in the centre — the others being Farmers' Trading (42,000 sq. ft.) Woolworths (20,000 sq. ft.) and George Court's (16,000 sq. ft.). The 42 smaller stores range in size from 350 sq. ft. to 4,500 sq. ft. Services include a Post Office, medical, dental and professional offices, Plunket rooms, banks, bus and taxi services and parking for 1000 cars. Photographs on this page were taken on the day of Foodtown's opening, when a visit to the centre was made by members of Manukau County Council, Pakuranga County Town Committee and the Member of Parliament for Pakuranga (R. J. Tizard), accompanied by executives of Fletcher Trust and the architects (Kingston, Reynolds, Thom and Allardice).

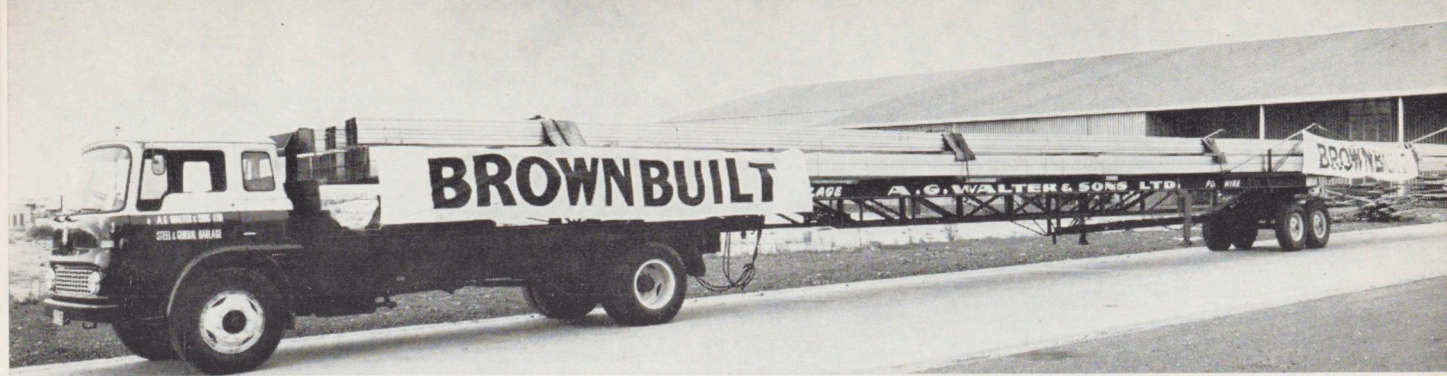
SHOPPING CENTRES



From left: Messrs. B. T. Silcock (Pakuranga County Town Committee), E. L. G. Clist (Chief County Inspector), J. H. Churton (General Manager, Fletcher Trust), B. J. Kerswill (Chairman, Pakuranga County Town Committee), H. D. Lambie (Chairman, Manukau County Council), J. R. Humphreys (Project Controller Fletcher Trust).



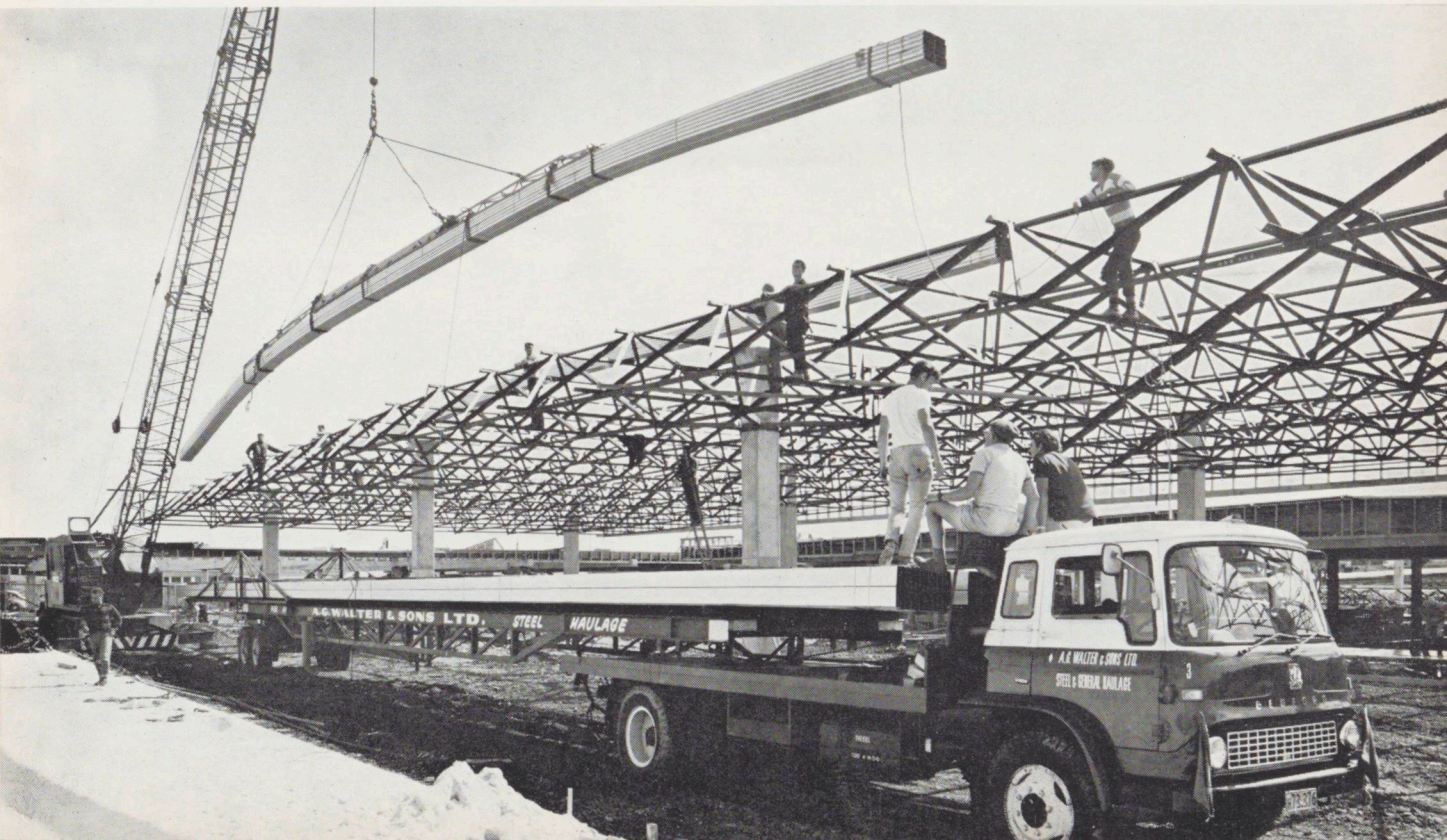
From left: Messrs. M. Ellis (Kingston, Reynolds, Thom and Allardice), R. H. Lymburn (Secretary, Pakuranga County Town Committee), R. Wood (Manukau County Clerk), R. J. Tizard (M.P., Pakuranga), I. Reynolds (Kingston, Reynolds, Thom and Allardice), K. Robinson (Manager, Pakuranga Town Centre), and H. D. Lambie (Chairman, Manukau County Council).



NEW
**BROWNBUILT
RECORD**
94 FT.
CONTINUOUS ROOFING

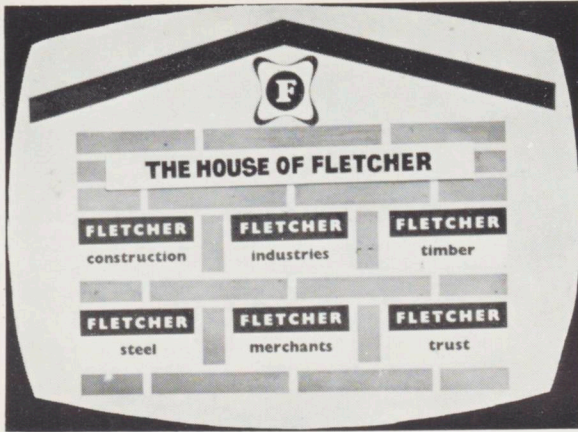
ONE of the advantages of Brownbuilt cold-rolled steel roofing (made at Penrose) is that it can be produced in continuous lengths which are restricted only by problems of transporting the material from factory to building site. Despite these, the record continues to rise — 74 ft. lengths for Pacific Steel's Mill, 84 ft. lengths for the air cargo building at Mangere Airport and now 94 ft. lengths for Woolworths' building at Pakuranga Town Centre. Photographs show this latest consignment leaving the factory and being placed in position on the Woolworths' building. Fletcher Plumbing were responsible for the fixing.

Thirteen

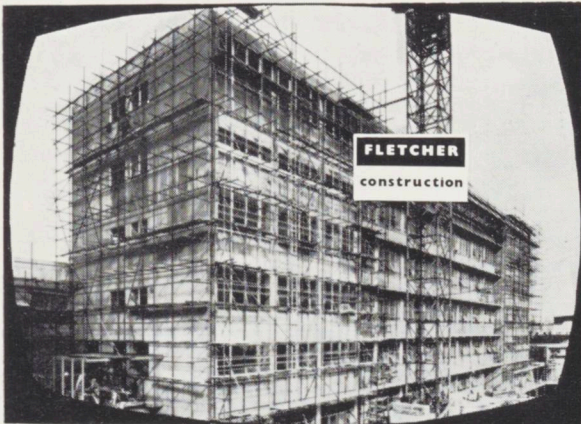


T.V. for P.R.

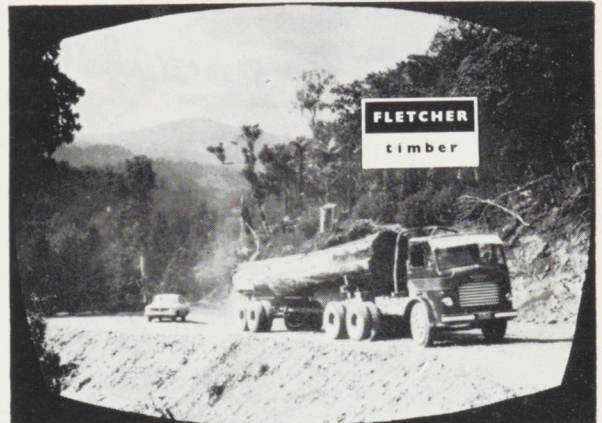
ALTHOUGH it is accepted practice overseas, advertising time on New Zealand television is little used for public relations purposes. Therefore when Fletchers decided to use their regular 30-second "spot" on AKTV2 in March and April to tell the Fletcher story it was certainly a "publicity first" for the Organisation and possibly for New Zealand. Object of the film was to let it be better known that Fletchers were more than builders and had a wide variety of services to offer. Telling the complex Fletcher story in 30 seconds (with 28 seconds of spoken commentary) was no mean problem for the Advertising and Public Relations Office of Fletcher Group Services, which planned and scripted the film and prepared the storyboard. How it was done is shown in the stills from the commercial reproduced on these pages.



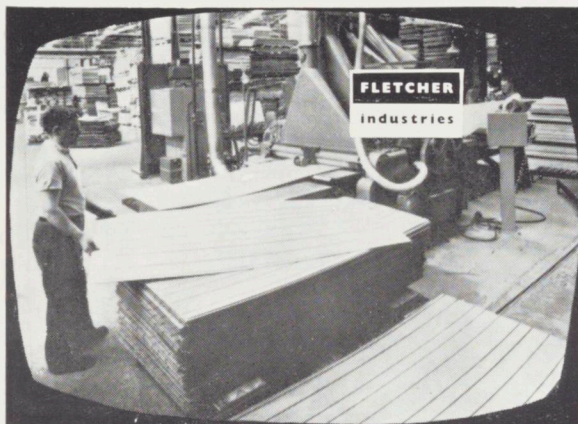
1. The House of Fletcher — built to help build New Zealand.



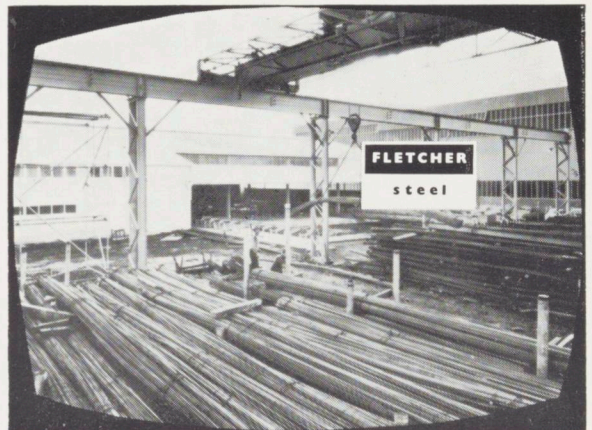
2. Fletchers build.



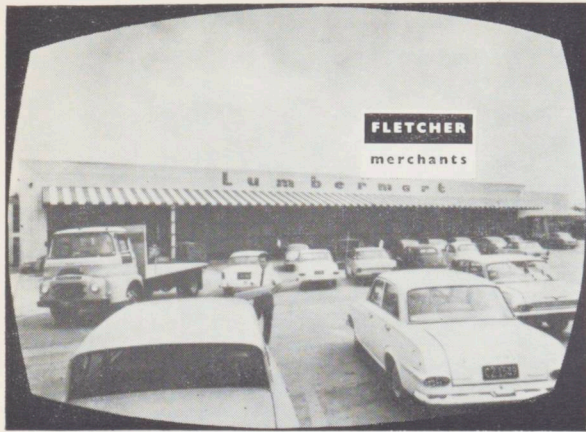
4. Log, mill and process timber.



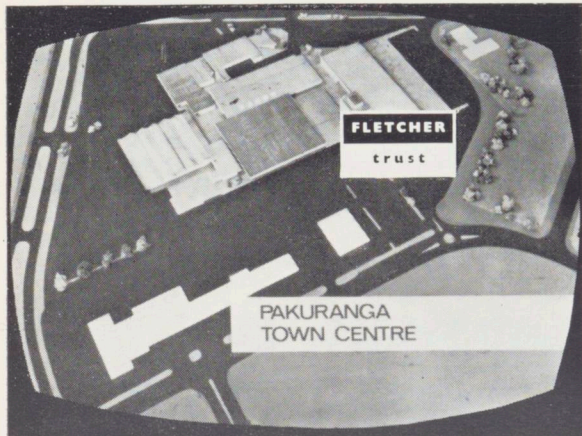
3. Fletchers manufacture building materials.



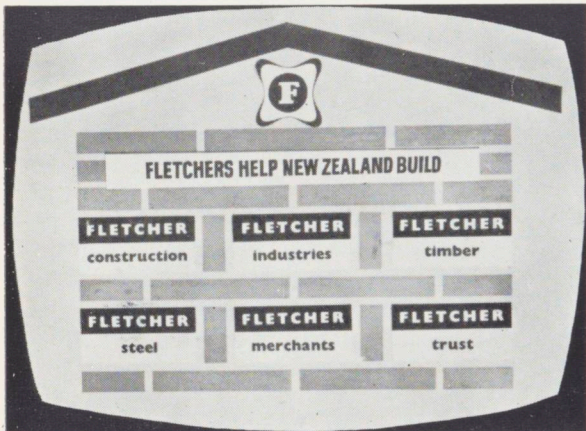
5. Merchandise and fabricate steel.



6. Wholesale and retail all builders' supplies.



7. Develop and manage land and property.



8. Businessman or merchant, builder or handyman — where building is involved Fletchers can help.

MARSDEN POINT POWER STATION CONTRACT

AS Arrowhead was going to press, it was announced by the Minister of Electricity, Mr. Shand, that the contract for the construction of an oil-fueled power station near Marsden Point had been awarded to a joint venture of Fletcher Construction (sponsor), Downer and Co. Ltd. and Wilkins and Davies Construction Co. Ltd.

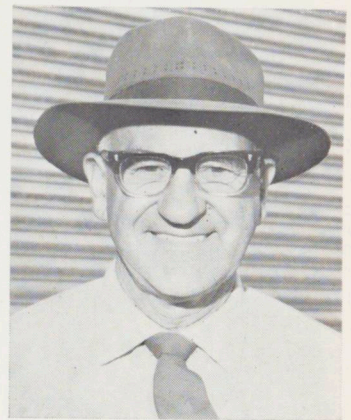
The contract is worth approximately £4 million. It is of unusual interest in that members of the joint venture are all New Zealand companies, whereas more often than not, in the past, overseas construction companies have participated in projects of this size.

Because growth in the demand for electric-power has been greater than that anticipated, the first of the units at the station must be ready for service by the winter of 1967 and the second by the end of that year, so that the whole job has to be completed within about two and a half years. To quote the Minister's statement, "this is exceptionally fast work by any standards", and it necessitated an immediate start on the job.

VERY LONG SERVICE

A party was held in Fletcher Construction's Auckland office in March to mark 45 years of service to the company by J. W. Hill. Jimmy Hill was engaged by Mr. W. J. Fletcher (brother of Sir James) on 1 March, 1920. Contracts on which he has worked in Auckland include Hobsonville Air Base, Milne and Choyce, the Grey's Avenue flats, Bycrofts, The "Star" office, Dominion Motors, Greenlane Hospital and the Cathedral of the Holy Trinity.

At present he is Project Foreman on the £500,000 contract for the Air New Zealand workshop on Mangere Airport. Over 70 Fletcher Construction executives, foremen



and staff and other people who had been associated with Jimmy Hill over the years gathered to congratulate him. He was presented by the Managing Director of Construction (J. Espie) with a fireside chair and a lamp.



Otago University Library — some of the 23,000 acoustic ceiling tiles (above), and (below) a section of the 3,500 yards of Par-K flooring.



more about OTAGO UNIVERSITY LIBRARY

BY any standard the new Otago University Library is an impressive place and although in the last issue of Arrowhead the completion of this £500,000 contract by Fletcher Construction was recorded, we make no apology for devoting further space here to other aspects of the project.

A library is intended for quiet reading and research and this gave Fletcher Insulation and Acoustic Services considerable scope in their field of operations.

Their contract involved the supply and erection of 23,000 steel acoustic tiles, shown in the top photograph on the facing page. The tiles were moulded from 20 gauge steel and formed with a raised centre. Paragrid (plastic egg — crate design units) were inset between the tiles at regular intervals as light diffusers. Flesound unperforated plastic pyramids were used externally as a decorative feature under the entrance canopy.

Another Fletcher subsidiary, Redpaths (a division of Butler Bros., our South Island merchant company), were responsible for several acres of flooring. They laid 3,500 yards of Par-K flooring (a Fletcher Timber product), 2,500 yards of vinyl floor tiles and 3,300 yards of carpet.

It is traditional for the principal contractor when a building is being officially opened to present the dignitary performing the opening ceremony with a memento of the occasion. In the case of Otago University Library, with the warm approval of the Minister of Education (the Hon. A. E. Kinsella), who was officially opening the library, Fletcher Construction made a presentation to the library. The gift consisted of over 200 prints from a volume published in 1826 after the scientific expedition of the French

corvette, La Coquille. The Hocken Librarian at Otago University (M. G. Hitchings) makes these comments on the significance of the voyage and the prints,

“Louis Isodore Duperrey (1786-1865) on the order of King Louis XVIII of France, undertook a voyage of discovery and scientific enquiry around the world in the corvette La Coquille during the years 1822-25. This voyage was particularly significant in relation to New Zealand for a fortnight was spent in the Bay of Islands during April, 1824. Not since Cook and de Surville in 1769, and the fateful 1772 expedition of Marion du Fresne, during which he was killed, had the North Island of New Zealand been visited by a scientific expedition. Cook himself on his later voyages and those who followed him and actually were on shore (Vancouver in 1791, Malaspina in 1793, and Bellingshausen in 1820) restricted themselves to the South Island.”

“Duperrey and his scientists were therefore in a particularly favourable position to undertake observations of great significance in the fields of the natural sciences and ethnology of the North Island of New Zealand. They used their opportunity well, as they did throughout the whole voyage which took in South America, and the Pacific, the Society Islands, New Ireland, New Guinea, Australia and the Carolines, as well as New Zealand.”

“By 1830, the results of their zoological observations were published in two handsome volumes with accompanying magnificent atlases or volumes of illustrations. Both are now rare and valuable. The prints so generously donated by The Fletcher Construction Company Limited form these atlases.”

FLETCHER PEOPLE

Departures — Appointments

W. C. Phillips, Northern Regional Manager of Fletcher Steel, left recently to go into business on his own account. Wendell had been 20 years with the Group, the last 10 with Fletcher Steel. His place has been taken by **W. J. (Bill) Reidy**, from Wellington.

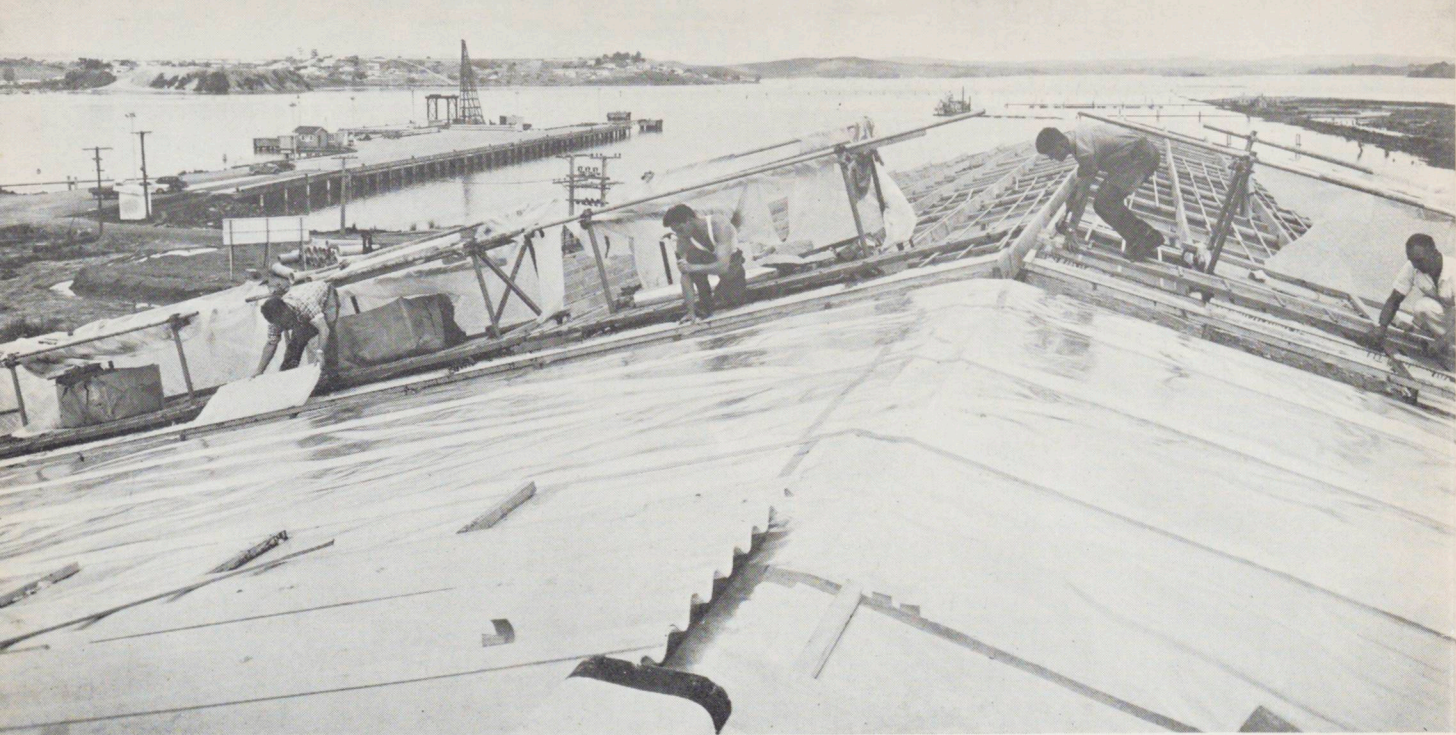
R. L. (Leo) Martin, foreman at Fletcher Merchant's Penrose Yard, has retired after 20 years with the Organisation. Leo has spent most of his time with the company on the timber merchandising side, in-



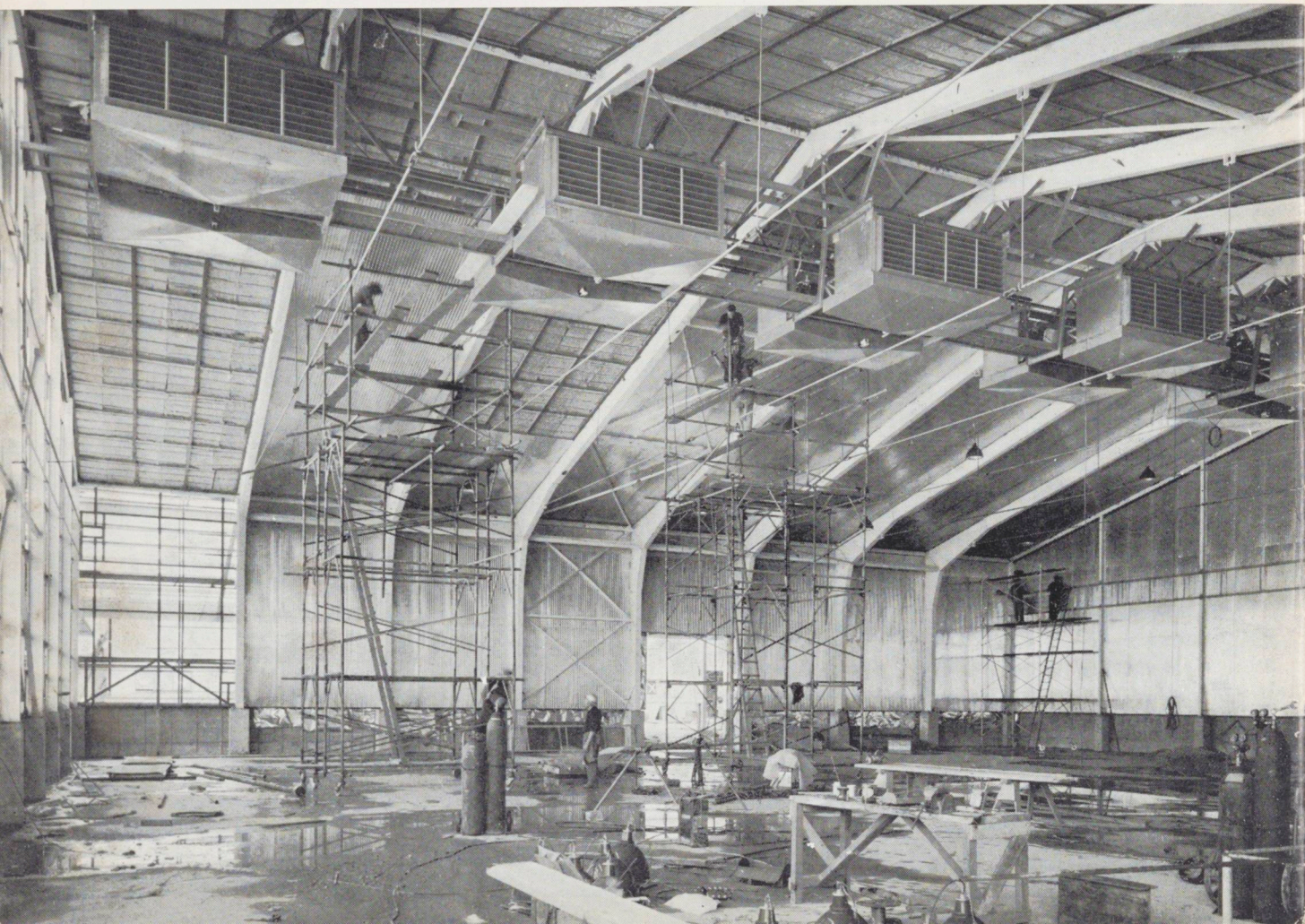
cluding Manager of the Lumbermart and Yard Manager at Kawerau. With the best wishes of his colleagues goes also a soupçon of envy — Leo is moving to Kaiaua, the fisherman's paradise in the Firth of Thames, to take over the camping grounds and cabins.

W. J. (Bill) Fox, Christchurch Sales Manager of Fletcher Industries, has resigned to join a firm of architects. He is succeeded by **Ross Binning** from the Christchurch sales staff.

W. G. Bissell has been appointed Assistant General Manager of Stuart & Chapman. A West Coaster, Bill was formerly Secretary at Stuart and Chapman's Ruatapu Mill.



The photographs show (top) the fibreglass being installed just ahead of the roofing and (below), fixing of the aluminium on the ceiling.



A NEW CONCEPT IN COOLROOM DESIGN

WHEN Fletcher Insulation, Auckland, became the successful tenderer for the insulation work of a 30,000 sq. ft. butter coolroom block for the Whangarei Harbour Board a multitude of problems had to be solved.

The block consisted of three rooms each 100 ft. x 100 ft. with a 24 ft. wall height, rising to a 36 ft. ridge height. The design was basically a steel portal with timber framework to carry the insulation, an inner cladding of aluminium and an outer cladding of corrugated asbestos cement. The insulation material for the walls and roof was K 234 fibreglass in two layers enclosed with a vapour seal of aluminium foil.

Because of the design, the insulation and vapour seal had to be placed from the outside before the outer sheathing was erected. The building programme allowed three weeks per room of 10,000 sq. ft. for wall and roof insulation. Timing had to be synchronised with the fixing of the outer cladding to protect the installed insulation work against the weather.

To overcome this time-and-weather problem a readily mobile, gantry-type scaffold was designed and erected over the building. This had a moving walkway and working platform with handrails for insulation-fixers, together with easily accessible wire netting storage bins to hold the lightweight insulation materials and to prevent them being blown away in the ever-prevailing wind. Plastic roll covers were part of this scaffold so that materials and uncovered fibreglass work could be covered quickly in the event of sudden rain. This scaffold proved to be successful and, notwithstanding bad weather, the insulation work was kept on schedule and well ahead of the roofers on all three rooms.

The floor insulation was 10 in. cork in three layers on a vapour seal of polythene and aluminium foil. Again there was a very tight time schedule but, as a result of good site organisation, the final two layers of cork in hot bitumen together with a floodcoat, topped off for

foot traffic and waterproofing were laid in one day over an area of 10,000 square feet.

This performance was repeated twice on the subsequent rooms.

Fifty railway waggons of cork, 25 waggons of fibreglass, 150 rolls of reinforced aluminium foil, 30,000 sq. ft. of polythene and 6,000 gallons of bitumen were used and placed in the 18 weeks that the job took to complete.

Consulting Engineer was K. Tapper. The main contractors were Downer & Company Limited.

Obituary

It is with considerable regret that we announce that Sam Gibson died suddenly on April 21.

As J. C. Fletcher's driver and Head Office 'handyman' he was well known to all at Penrose and he made many friends both New Zealanders and overseas visitors on trips to and from the airport and on tours farther afield. Sam was 62 and had been with the Company for nearly 15 years.

His funeral service at Onehunga was attended by the Chairman and J. C. Fletcher as well as many other Penrose friends.

He has been succeeded by Ted Taylor.

A GREAT DAY FOR THE COAST
page 2

ARROWHEAD
WINTER 1965

NEW SENIOR APPOINTMENTS
page 6

in this issue...



PUBLISHED BY
FLETCHER HOLDINGS
LIMITED,
GREAT SOUTH ROAD,
AUCKLAND, NEW ZEALAND.

SHOPPING CENTRES
page 10

OTAGO UNIVERSITY LIBRARY
page 16

WHITES AVIATION PHOTOGRAPH