



PUBLISHED BY
FLETCHER HOLDINGS
LIMITED,
GREAT SOUTH ROAD,
AUCKLAND, NEW ZEALAND.

Arrowhead

WINTER 1964



WAIPARI

LOGGING, milling, planing, treating, pre-cutting, retailing of timber and related supplies, and the manufacture of joinery and timber products—these are the activities of the Waipari Timber Company Limited.

Waipari Timber was formed to consolidate various logging, sawmilling, manufacturing and retailing units in Taumarunui and Taranaki. Head office is in Taitua Street, Taumarunui, and overall the company has a staff of 80. Fletcher's ownership was a consequence of the purchase of the New Zealand assets of the Kauri Timber Company.

There are retail yards in Taumarunui, Eltham and Hawera — in Taranaki the company operates under the name of the Puketapu Timber Company — and joinery factories in Taumarunui and Eltham.

Logging operations are concentrated on the Puketapu 3A block in the mountainous Hauhangaroa range between Taumarunui and Tokaanu. Present production is approximately 6 million log feet per year. Peelers are supplied to Fletcher Industries' plant at Manunui and the main sawmilling plant is located at Taringamotu a few miles from Taumarunui.

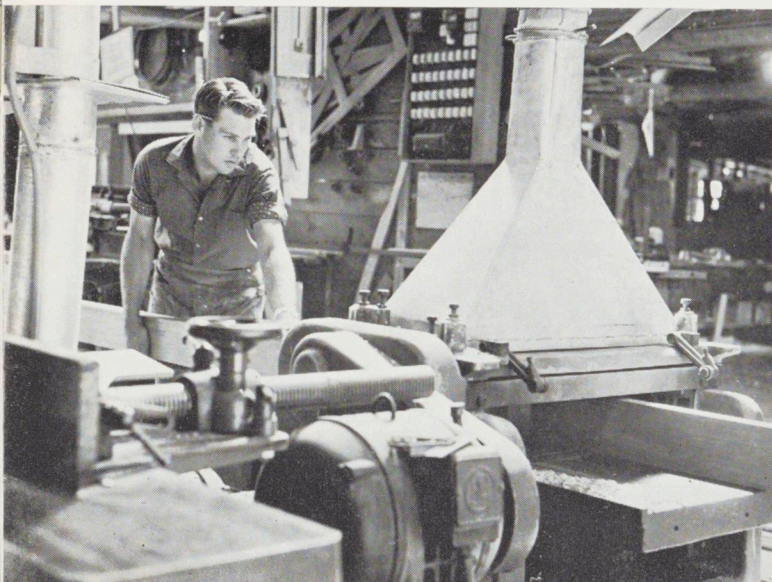


Cover: Logging truck on the Waipari Road, Puketapu 3A Block.

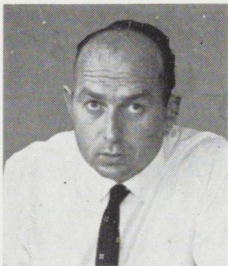
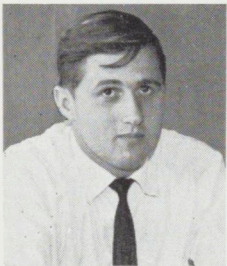
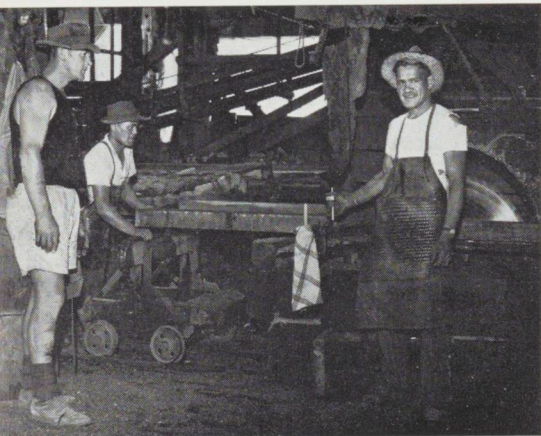
Inside Cover: Baker's Ridge in the Puketapu Block.

Above: Logging operations in the Waipari Basin.

Left: Graham Edwards, Taumarunui Joinery Foreman, operating a Wadkin planer.



WAIPARI



Head Office, Taitua Street, Taumarunui.

The site at Taringamotu comprises 15 acres and apart from the sawmilling production (15,000-16,000 board feet per day) there is also a planing mill, treating plant, pre-cutting factory and an air-drying yard. From this point the native timber requirements of the group's three retail yards and two joinery factories are prepared. In addition timber is supplied to other companies within the Fletcher Organisation.

Present directors of the company are A. T. Jewell (Chairman), B. A. Henry, K. A. Civil and A. C. Watkin. Area Manager is Russell McKain.

Captions from top left:

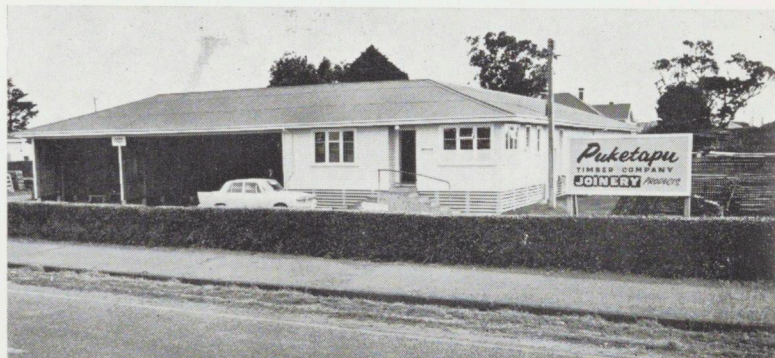
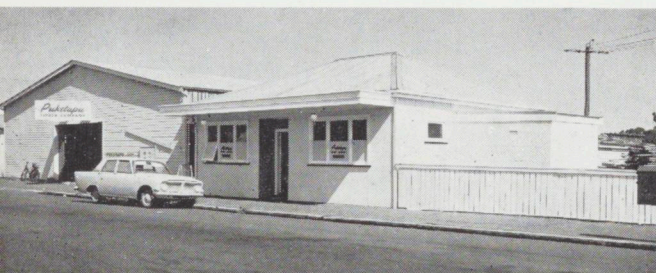
Russell McKain, Manager, and Ron Davis, Taranaki Manager.

Jim Thompson, Mill Foreman, with M. Edwards and T. Rehu at Taringamotu sawmill.

Peter Wheeler (Accountant), and Peter Millar (Secretary).

Bottom Left: Retail yard, Bridge Street, Eltham.

Bottom Right: Retail yard, Glover Road, Hawera.





Avis McIntosh shows a champion's style in the 80 Metres Hurdles.

FLETCHERS SPONSOR PRE-OLYMPIC ATHLETIC MEETING

MOST of the big-name New Zealand athletes participated in an athletic meeting sponsored by the Fletcher Organisation at Auckland's Western Springs Stadium in April. Because this was the last opportunity for athletes to break Olympic qualifying standards, the meeting attracted a big crowd and caused widespread interest.

The meeting saw three New Zealand records broken and a sub-four-minute mile, as well as a number of other well-fought contests in both senior and junior events.

The meeting was organised by the Owairaka Athletic Club to raise funds to bring its Lovelock Track up to all-weather Olympic training standards. Lovelock, it will be recalled, was 1931 Rhodes Scholar. Fellow Rhodes Scholar the same year was Dr. J. S. Watt, Managing-Director of Fletcher Industries.

John Watt held the Auckland Grammar 880 yards record for 30 years, was the 880 and mile champion at Auckland University and Auckland half-mile champion. He ran with Lovelock at Oxford and obtained a Half-Blue for the 880.

His daughter, Lorna, is the current Auckland Ladies 440 champion, winning the event at the age of 16.

The Fletcher Organisation as a whole sponsored the meeting and provided the trophies while individual companies gave their names to the star events and publicised them.

These events were: Senior Mile Invitation and

200 Metres Senior Invitation (Fletcher Industries), 30,000 Metres Invitation (Fletcher Merchants), 10,000 Metres Invitation (Fletcher Trust), 80 Metres Ladies Hurdles (Fletcher Construction), Junior Three Miles (Fletcher Steel) and 10,000 Metres Walk (Fletcher Timber). Officially representing these companies at the meeting were Dr. J. S. Watt (Managing-Director, Fletcher Industries), W.A. Bourke, (Managing-Director, Fletcher Merchants), J. H. Churton (General Manager and Director, Fletcher Trust), G. A. Bourke (Auckland Manager, Fletcher Construction), A. W. Craig (Chairman, Fletcher Steel), and A. T. Jewell (Managing-Director, Fletcher Timber). Arrowhead Editor (P. A. Matthews) was responsible for coordinating Fletchers' participation in the meeting.

Leading athletic officials at the meeting included J. McManemin, President of the New Zealand Amateur Athletic Association; F. Sharp, President of the Auckland Centre and H. A. Payne, President of Owairaka Club.

Highlights of the meeting were the breaking of the 80 Metre Hurdles record by Avis McIntosh, (10.8s.), the breaking of the 15 miles and 30,000 Metres national records by Barry Magee, the sub-four-minute mile by Peter Snell (3m. 58.5) and John Davies (3m. 58.6) with Bill Baillie third, and the very comfortable defeat of Australian Dave Power by Murray Halberg in the 10,000 Metres. Other highlights were a brilliant run by Rex Maddaford to win the Junior Three Miles and the running of the Junior 880 Handicap (won by H. Bellamy) in 1m. 51.6.

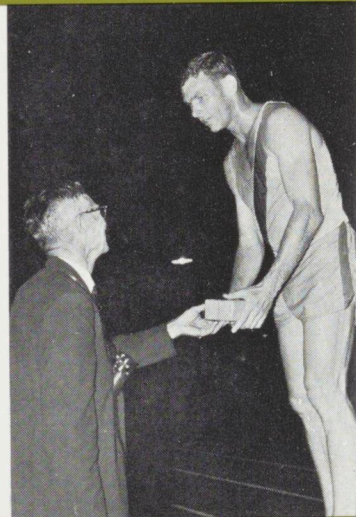
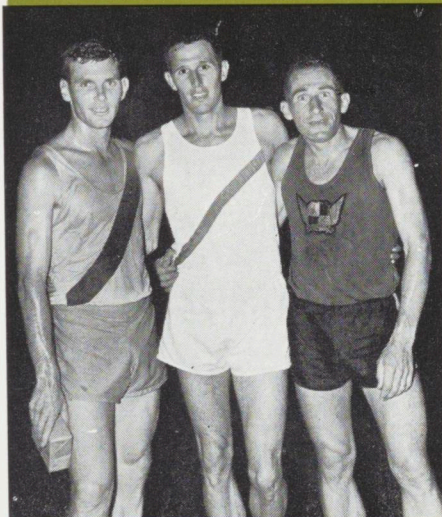


Peter Snell, in an outstanding finish, wins the mile from John Davies. Bill Baillie was third.

PRE-OLYMPIC ATHLETIC MEETING

INVITATION MILE

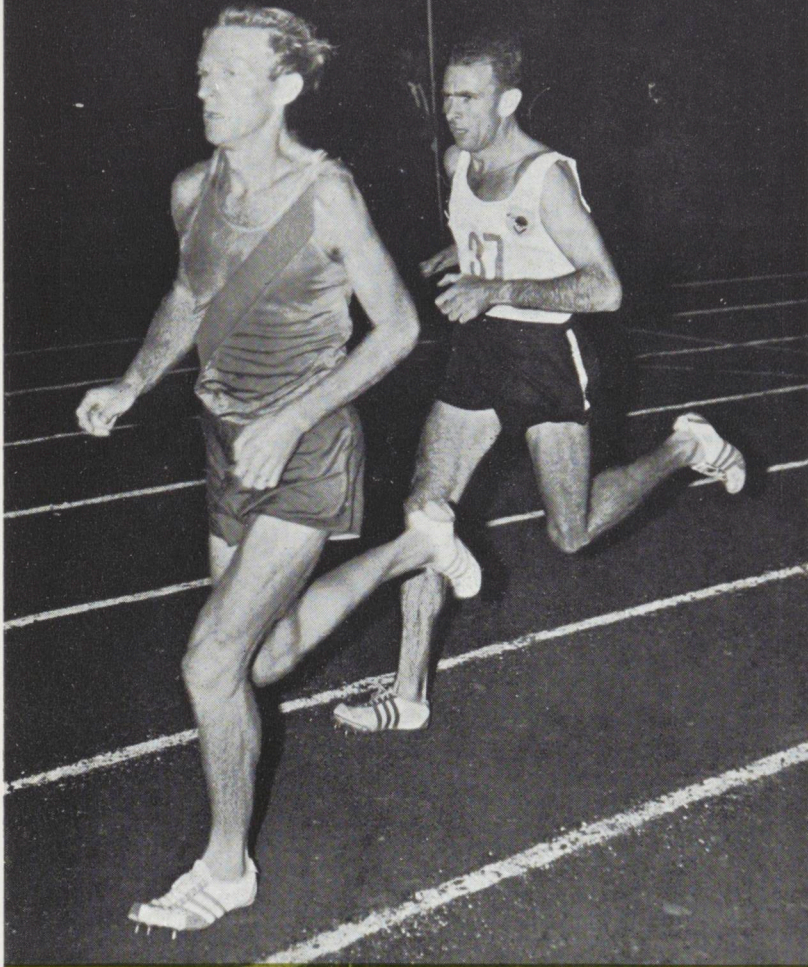
Snell, Davies and Baillie, and (far right) John Watt (on behalf of Fletcher Industries) presenting Snell with his prize. The mile was an exciting race from the start thanks to Bill Sutcliffe (Putaruru clubmate of John Davies), who carried the field through the first quarter in 60 seconds and through the half in 2m.1. Bill Allison led through the third quarter in 3m.3. Davies then came to the fore followed by Snell and Baillie. A furlong from home Snell put on his winning burst to finish in 3m.58.5 with Davies one tenth behind and Baillie third in 4m.2.2.



10,000 METRES

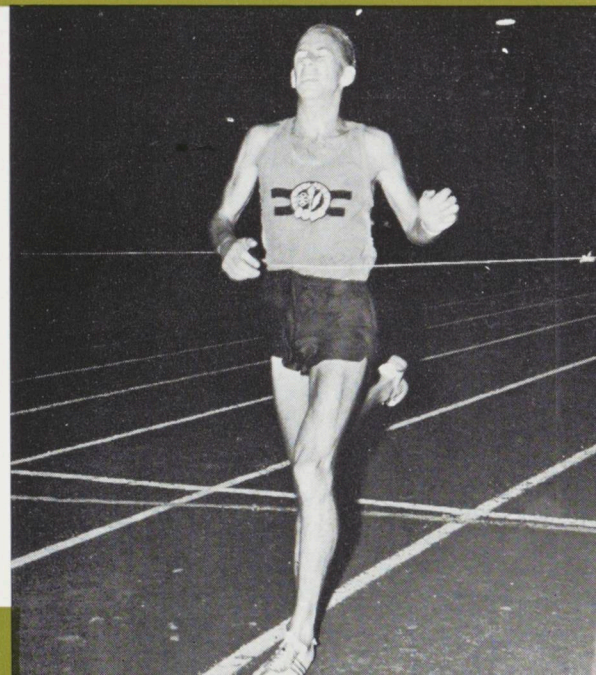
Murray Halberg and Dave Power (Australia) during the running of the 10,000 metres. Below: Jock Churton (Fletcher Trust) congratulating Power, who is flanked by Halberg and Jim Farmer (University) third placegetter.

The race soon showed itself as a contest between Halberg and Power, but after three miles Halberg had drawn 40 yards away from the Australian and at three and a half miles had lapped the bunch. From then on it became very much of a solo effort by Halberg who finished with a splendid sprint to win in 28m. 56s.



30,000 METRES

Bill Bourke (Fletcher Merchants) congratulating Barry Magee on his record-breaking 30,000 metres, and (right) Magee breasting the tape after knocking 1m. 55.1s. off the 15-miles record and 8.2s. off his own New Zealand 30,000 metres record. He was unfortunate in that he had to go it alone for the last 23 laps after Ray Puckett fell. Otherwise this race might have seen a new world record.



PRE-OLYMPIC ATHLETIC MEETING



Alex Craig (Fletcher Steel) congratulating Rex Maddaford on his victory in the Junior Three Miles. With Maddaford are Eddie Rempelberg and John Becket.



John Watt (Fletcher Industries) congratulates his daughter Lorna on winning the Ladies 200 Metres Handicap. Place-getters were Yvonne Cowan and L. Wilson.



George Bourke (Fletcher Construction) presenting the prizes for the Ladies 80 Metre Hurdles, with Avis McIntosh, Jeanette Heeps and Marjorie Corbett on the dais. Arthur Jewell (below) presenting the prizes to the place-getters of the 10,000 Metres Walk—M. Hinton, R. Pilkington and C. Herman.



John Watt and Harry Molony (Fletcher Holdings) with H. J. McNeil (Auckland Centre auditor) at the get-together of sponsors, officials and athletes after the meeting.



Phil Matthews finds a pleasant source of sports news for Arrowhead.



Wally Scott and Bob Arkley (Fletcher Construction) with Alex Marks, centre (Fletcher Group Services).



New Zealand Easter Show

SHOWING OFF PLYWOOD

THE attractive effects which can be achieved with plywood as a panelling for a home or office were strikingly shown at the New Zealand Easter Show at Auckland this year.

Fletchers' stand was devoted to products manufactured by Fletcher Industries and although Plycopyne flooring, Stramit strawboard building slabs, Durock deck tiles and Duro-lite were also in the display, it was plywood which had the lion's share of the space.

Here was something very different from the yellow-varnished plywood to be found in many offices. A series of panels simulated actual rooms and gave the 300,000 visitors to the show an opportunity to judge how attractive plywood veneers can look in a home or office. Responsibility for the design and fabrication of the display rested with Des Scofield and Brian Clark of Fletcher Industries' technical sales staff.

Top photo: Plypanel (left), a new random-grooved plywood, satin-finished, and Weldtex (right). Floors are of Plycopyne particle board sheet with Jarrah dividing strips.

Centre: Duro-lite fibreglass reinforced translucent polyester flat sheeting in the form of a room divider.

Photo, bottom left: Weldtex panel (left), spray-painted in three colours, and "Tudor Panelling" — clear varnished plywood with contrasting vertical battens.

Bottom right photo: A panel of Shan-Tong clear varnished, and on the left two panels of Pacific Mahogany exterior ply. Durock asbestos cement deck tiles on the floor and a canopy of corrugated translucent Duro-lite.

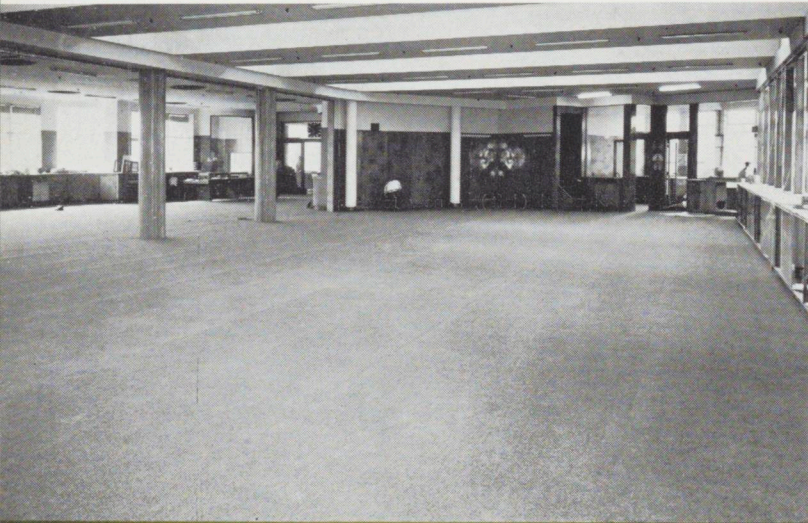
PENROSE :



The office as it was (above) and (below) after the partitions had been removed and the carpet laid.

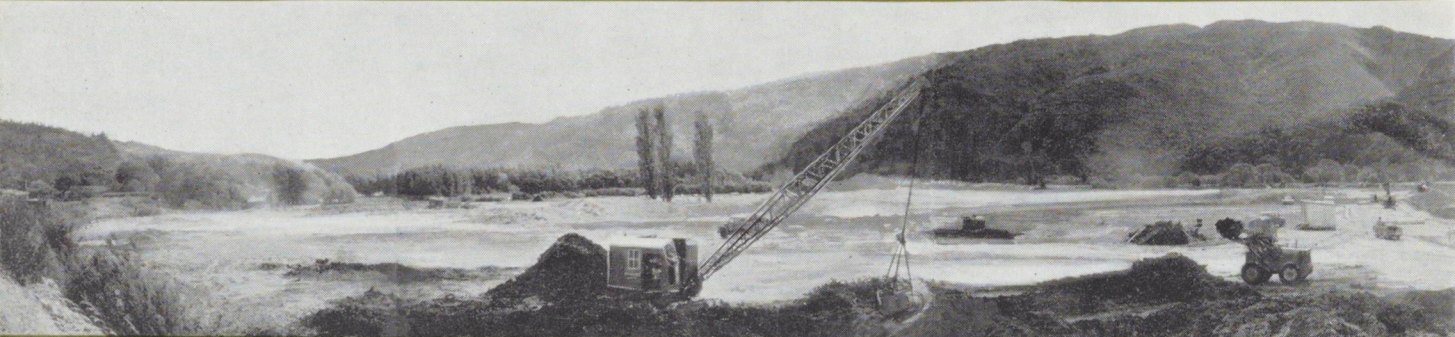


Down comes the main partition which divided the office into two large rooms.



Alex Marks surveys the wreckage during the gutting of the offices.

HERETAUNGA PARK SUBDIVISION



ALTERATIONS AT HEAD OFFICE

DURING the Christmas vacation the opportunity was taken to make a start with the reorganisation and redecoration of Fletcher's main offices at Penrose. During this time, when very few staff were working, the two big offices were gutted and converted into one open-plan office. The whole area was carpeted, new desks provided and an acoustic ceiling and air conditioning installed. Old panelling was replaced or re-varnished.

J. A. Redpath & Sons Limited were the contractors for the flooring, with Yates and McLean Limited as the sub-contractors for the carpeting. The total area carpeted, including executive offices and hallways was 9,300 sq. ft.—believed to be the largest single-floor carpeting contract ever carried out in New Zealand. Fletcher Insulation and Acoustic Services were responsible for the acoustic ceiling and Carrier Air (N.Z.) Limited for the air conditioning. Alex Marks was our 'Clerk of Works' for the project.

In addition the Boardroom has been enlarged by taking in the old teleprinter room, which has been transferred to alongside the main telephone switchboard.

Some 15 tons of old papers and records were burned from the filing room, which provided space for a new room to be built which now incorporates the library, the photo printing (new Rank-Xerox machine), new addressograph machine and the duplicator.

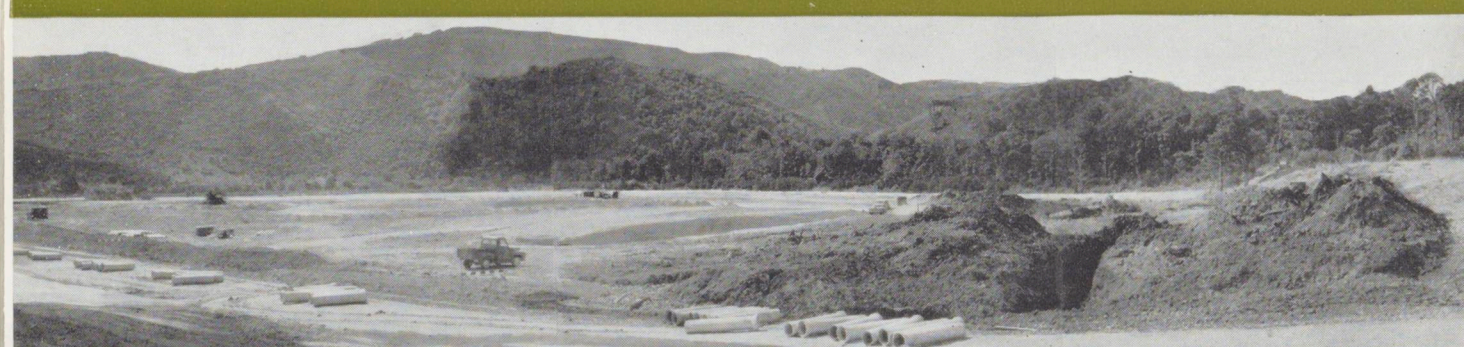
Opportunity was taken to "tittivate" many other places.

The plywood factory which forms part of this block has been re-roofed with Brownbuilt and Brownbuilt-profile translucent Durolite.

The office as it looks today. The three larger photographs were all taken from approximately the same position.



Site works well advanced on Fletcher Development's Heretaunga Park subdivision near Upper Hutt. The subdivision is 35 minutes from Wellington by electric unit. The majority of the 195 sections have been allocated to 22 Wellington builders and the remainder are for private sale or flats. There is also provision for a small shopping block. Shortly a parade of nine display houses will be held on the subdivision.







FIRST mooted in 1851, the Christchurch-Lyttelton road tunnel became a reality this year. The Governor-General, Sir Bernard Fergusson, performed the official opening on 27 February, the job being completed right on schedule.

In January 1961, the contract for the building of the tunnel at a price of £1,947,747.18.5 was let to Fletcher-Kaiser, a joint venture of The Fletcher Construction Company Limited and Kaiser Engineers and Constructors Inc., of California. Driving of the 6,350 ft. tunnel began soon afterwards and the break through came on 15 June, 1962, when the Heathcote tunnellers blasted through to the pilot tunnel which had been led in 1,300 ft. from the Lyttelton end. In August the tunnelling was completed. Half a million pounds of explosives had been used and 200,000 cubic yards of rock removed. Concreting, tiling, the installation of ventilation ducts, and of lighting followed. At the same time other contractors were responsible for constructing the approach roads, the toll plaza and administration building, and major development of Lyttelton Harbour facilities is under way. The main benefit of the tunnel will be to speed the transportation of goods between Lyttelton and Christchurch.

GOVERNOR-GENERAL OPENS

christchurch-lyttelton road tunnel



An aerial view of the Port Hills with arrows indicating the entrances to the tunnel.

christchurch - lyttelton road tunnel

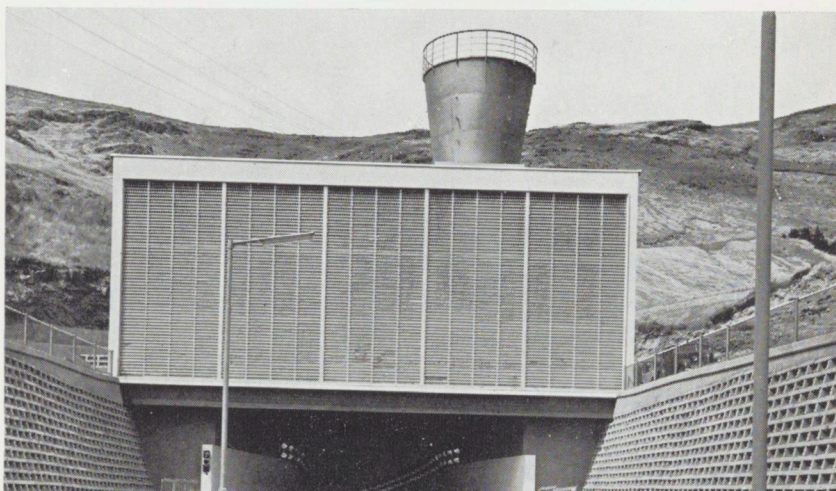
Right: The Governor-General greeting Mr. R. A. Witbrock, Chairman of the Road Tunnel Authority. With them is the Prime Minister, the Rt. Hon. K. J. Holyoake.



"Sepp" Lucas, Gerry Remick, and Jack Smith on the job during the construction of the tunnel. J. G. Smith was Project Manager for most of the job, with "Sepp" Lucas taking over in the latter stages. Gerry Remick came from the United States for the project.

Below right: Housing for the two 15-ton ventilation fans at the Heathcote (Christchurch) end of the tunnel. There is a similar fanhouse at the Lyttelton end. At full speed the fans can move 320,000 cubic feet of air per minute.

Page Fourteen



CONTRACT SIGNED:

WESTERN SAMOA HARBOUR DEVELOPMENT



On Leap Year Day (29 February), the contract between the Government of Western Samoa and Merritt-Tecon-Fletcher for wharf and harbour works was signed in Wellington. Those present at the signing were (seated): W. G. Smith, of Buddle, Anderson, Kent and Company, Wellington legal advisers to Merritt-Tecon-Fletcher; G. W. Bailey, Vice-President—General Manager of Tecon Corporation of Dallas, Texas; the Hon. F. C. F. Nelson, Minister of Works, Western Samoa; and the Hon. R. Frapwell, Attorney-General, Western Samoa. Standing: J. Espie, Managing-Director of Fletcher Construction; R. B. Gittins, Vice-President, Merritt-Chapman and Scott Overseas Inc., New York; H. C. Washbourne, Project Manager, Merritt-Tecon-Fletcher; the Hon. F. Betham, Minister of Finance, Western Samoa; P. Heller, Financial Adviser to Minister of Finance, Western Samoa; O. P. Gabites, New Zealand Consul-General in New York; I. G. Lythgowe, New Zealand Treasury; B. A. Claussen, Director of Works, Western Samoa.

BROWNBUILT

EIGHTY-FOUR foot lengths of Brownbuilt, cold-rolled galvanised steel roofing, which we showed in last issue leaving the Brownbuilt factory at Penrose, are here seen being hoisted on to the roof of the air cargo building at Mangere International Airport, Auckland. The Plumbing Division of Fletcher Construction is the sub-contractor for the supply and fixing of this roof.



introducing

THE BUTLER GROUP

IN pattern with the rationalisation of Fletcher's timber and hardware interests in the North Island, a similar reorganisation has been carried out in the South Island. Here cognisance has been taken of the South's attachment to old-established family names in commerce and these have been retained in our companies.

The functions now carried out by Fletcher

Merchants in the North Island—the merchandising of timber and hardware—are the responsibility in the South Island of Butler Bros. Limited. Its branches trade under the names of The Butler Timber Company Limited (Christchurch), McCallum & Co. Limited (Dunedin and Oamaru), The Otago Timber Company Limited (Dunedin), J. D. and L. Robertson Limited (Nelson), and M. Henderson Limited (Invercargill). All these companies are timber and hardware merchants. Other branches of Butler Bros. are R. C. Horsley Limited (Christchurch) and J. A. Redpath & Sons Limited (head office in Christchurch).

Horsleys' principal interests are cement and concrete products both for the building trade and for the home handyman.

Redpaths are flooring contractors. They are engaged in large commercial and industrial contracts in all centres. In Auckland and Wellington, up till the present, they have not sought the domestic market, but all other branches are concerned not only with commercial and industrial contracts, but with domestic work and the retailing of all types of flooring and roofing.

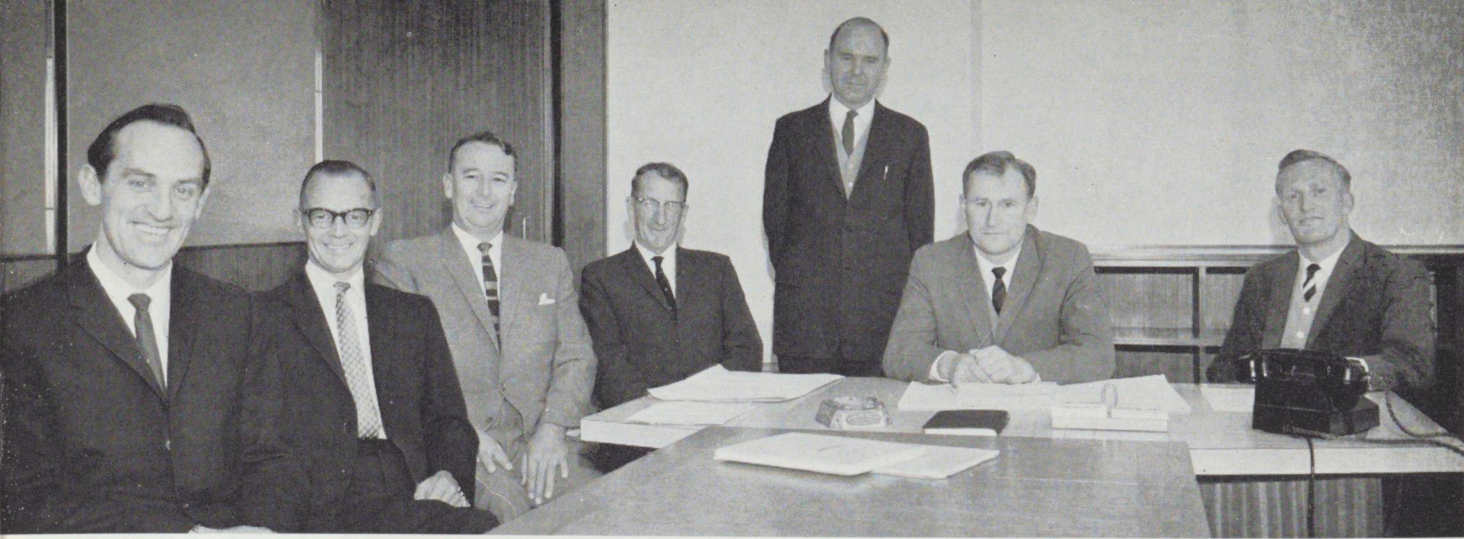
Redpaths have branches in Auckland, Wellington, Christchurch and Dunedin and at Hastings, Palmerston North, Blenheim, Greymouth, Timaru and Invercargill.

In these pages are shown some of the buildings and people in the Butler group of companies.

Fletcher's logging and milling activities in the South Island are carried out by Stuart and Chapman Limited. This company will be introduced in a later issue of Arrowhead.

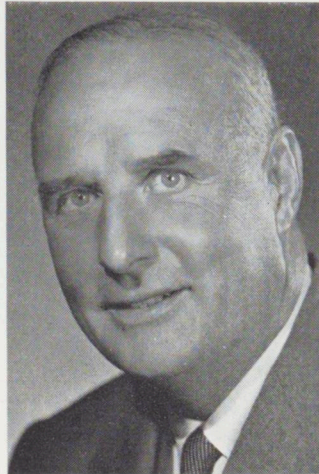
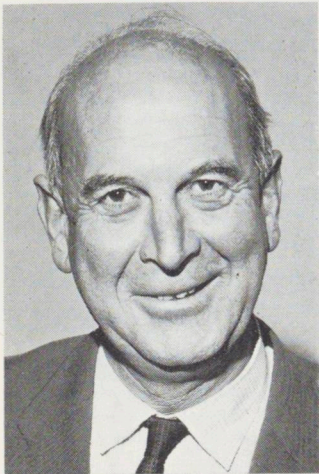
Fletcher occupy most of the rectangle in the centre of this aerial photograph. At bottom left is the hardware store of Butler Timber with the timber yards beyond it. The building at the end of the yard is the timber sales office. Adjacent are the Durock, Plycopyne and plywood factories of Fletcher Industries.





Above: Butler Bros. Management Committee. Left to Right: K. J. Brown (Head Office Accountant); C. P. Wilson (Head Office Purchasing Officer); M. R. Hamilton (Manager, R. C. Horsley); T. T. Robins (General Manager, J. A. Redpath); B. Horniblow (Head Office Secretary); D. W. Jowett (Managing-Director); E. A. Lawry (Head Office General Manager).

Below: Butler Timber Staff. Left to right: P. C. Chisnall (Warehouse Manager); A. J. Warnock (Hardware Manager); J. E. Read (Sales Manager); I. Laby (Chief Clerk); A. Andrews (Yard Manager); B. Kensington (Production Manager). Seated: E. A. Lawry (General Manager).



R. G. Stark and Howard N. Johnson (Chairman), directors of Butler Bros. The other directors are J. S. Fletcher, E. C. S. Falconer, H. F. Molony, and D. W. Jowett (Managing Director).

Below left: R. C. Horsley staff. Left to right: B. C. C. Wales (Assistant Manager); M. R. Hamilton (Manager); N. Overend (Yard Manager); I. Douglas (Salesman).

Below right: R. C. Horsley's Christchurch premises.



THE BUTLER GROUP



Robertsons' timber yard, Tahunanui, Nelson.



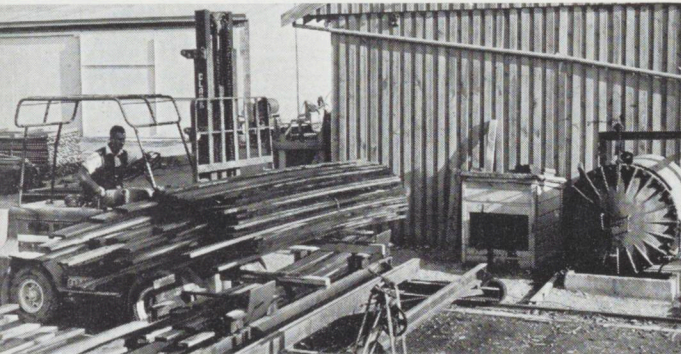
McCallums' main office and showroom, Dunedin. This was originally Wilkinsons and later Fletcher Hardware.



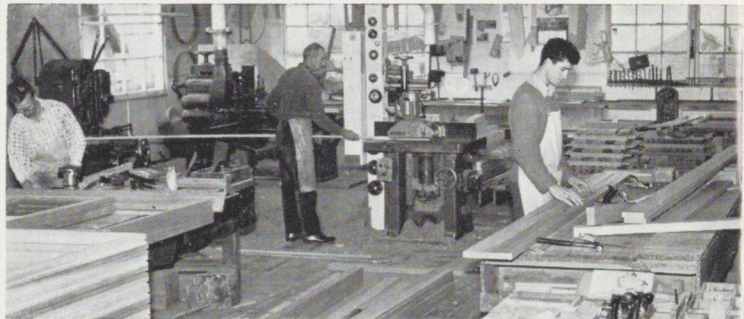
Some of the staff at Robertsons. Left to right: Rae Hoult (Senior Clerk), Bob Marshall (Joinery Foreman), Ken Craze (Treatment Operator), John Peck (Secretary), Nick Carter (Contract Manager), Don Batt (Head Yardman, Nelson), Lou Hedwig (Head Yardman, Tahunanui), John Cuthbert (Storeman).



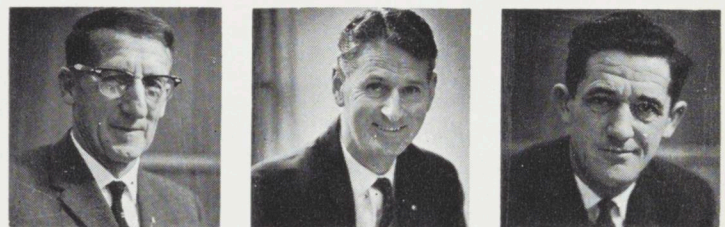
Some of McCallums' Oamaru staff. Left to right: Russell Harvey (Traveller), Stuart Renalson (Timber), Bernie McMullan (Accountant), Wallace Abernothy (Foreman), Jack Melvin (Hardware), Rennie Mullen (Joinery Foreman). Seated: Ralph Whitaker (Manager). Bernie McMullan has been appointed Manager of Robertsons.



Treatment plant, Tahunanui.



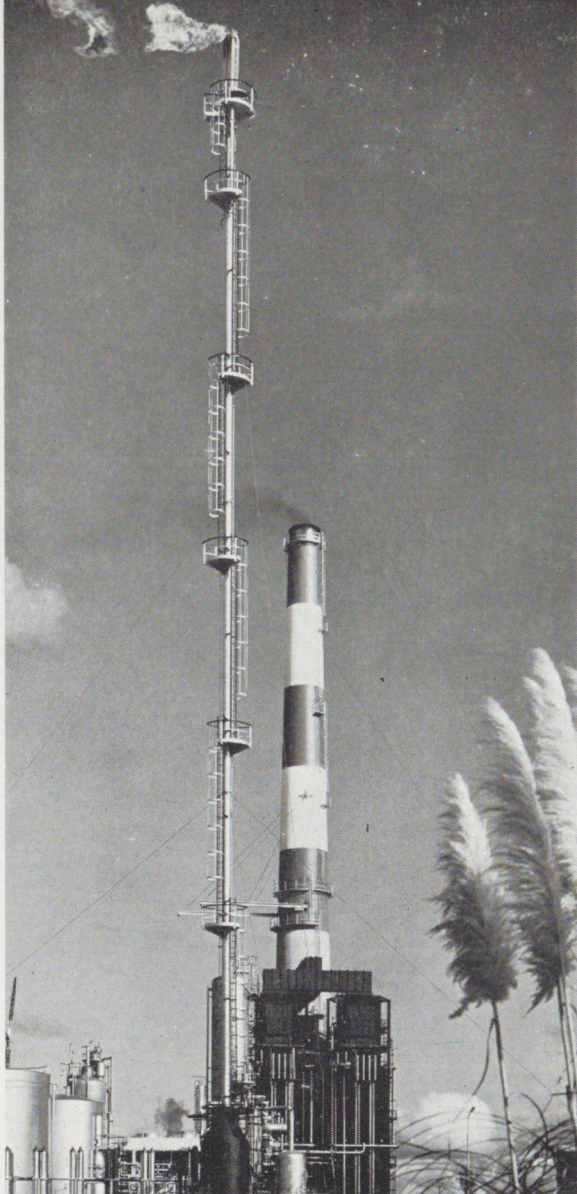
McCallums' joinery factory, Oamaru.



T. T. Robins (General Manager), A. S. Hill (Secretary) and E. T. FitzGibbon (Flooring Supervisor) of Redpaths.

Left: Redpaths' Christchurch showroom.

FIRST N.Z. OIL REFINERY NOW COMPLETED



New Zealand's first oil refinery—at Marsden Point, Whangarei—was coming into production as this issue of Arrowhead went to press and the official opening was planned for 30 May.

The New Zealand Refining Company Limited two years ago awarded the contract for the building of the refinery to a joint venture group consisting of Bechtel Corporation of U.S.A., The Fletcher Construction Company Limited and George Wimpey & Co. Limited of Great Britain. L. D. (Larry) Pitchford of Bechtels was appointed Project Manager.

The refining company is a joint venture of Shell, Mobil, Caltex, British Petroleum and Europa Oil.

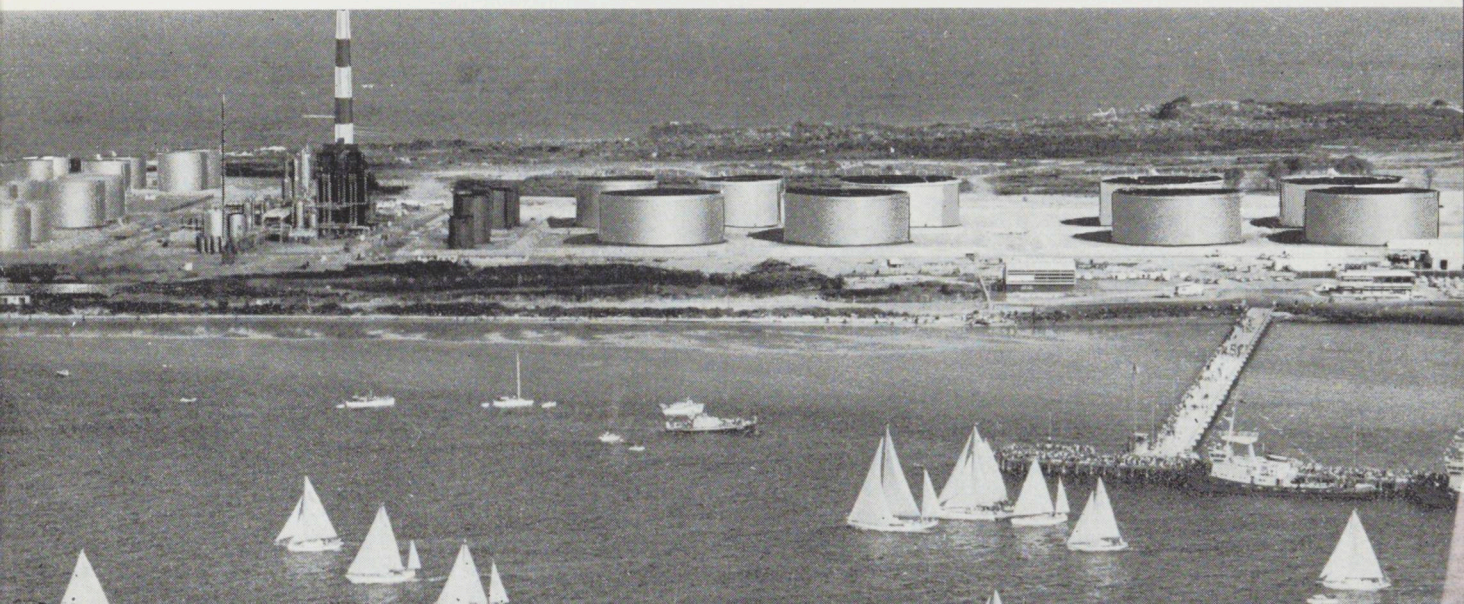
The refinery is expected to meet virtually all New Zealand's needs of petroleum products — petrol, diesel oil, fuel oil, bitumen, naphtha, kerosene — until 1967 when expansion of the plant may be necessary.

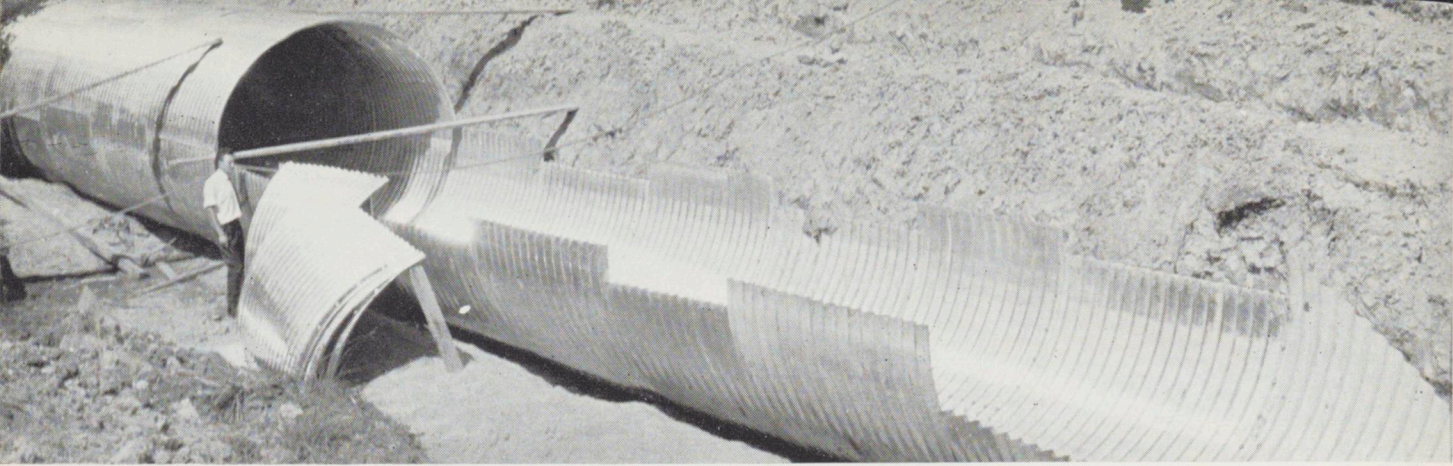
By early May the construction team had been reduced from 400 to 100 and by this time the furnaces had been lit, the water purification plant was working, and the first petrol was produced. There were the usual teething problems, but production was expected to be fully under way shortly.

Centre: Waste gases burning at the top of the 180 ft. flare stack during the initial distillation of crude oil at Marsden Point.

Below: A photograph of the oil refinery taken as New Zealand yachts began the race to Noumea, New Caledonia.

Page Nineteen





ARMCO CULVERTS PROVE POPULAR

ONE of the most spectacular sights in the backwoods of Atiamuri is a twin culvert, each pipe 144 in. in diameter and 102 ft. long. They are Armco metal culvert structures, a line handled by the Agency Division of Fletcher Steel. To install these structures it was necessary to divert a small river, but the ease of assembly and back-fill operation showed that Armco culvert structures have the edge on conventional methods of culvert design as regards speed and economy. They also have an advantage in life expectancy. More than 50 such structures were installed in New Zealand in 1963.

Armco drainage and metal products are only a part of the equipment promoted and sold by Fletcher Steel's Agency Division.

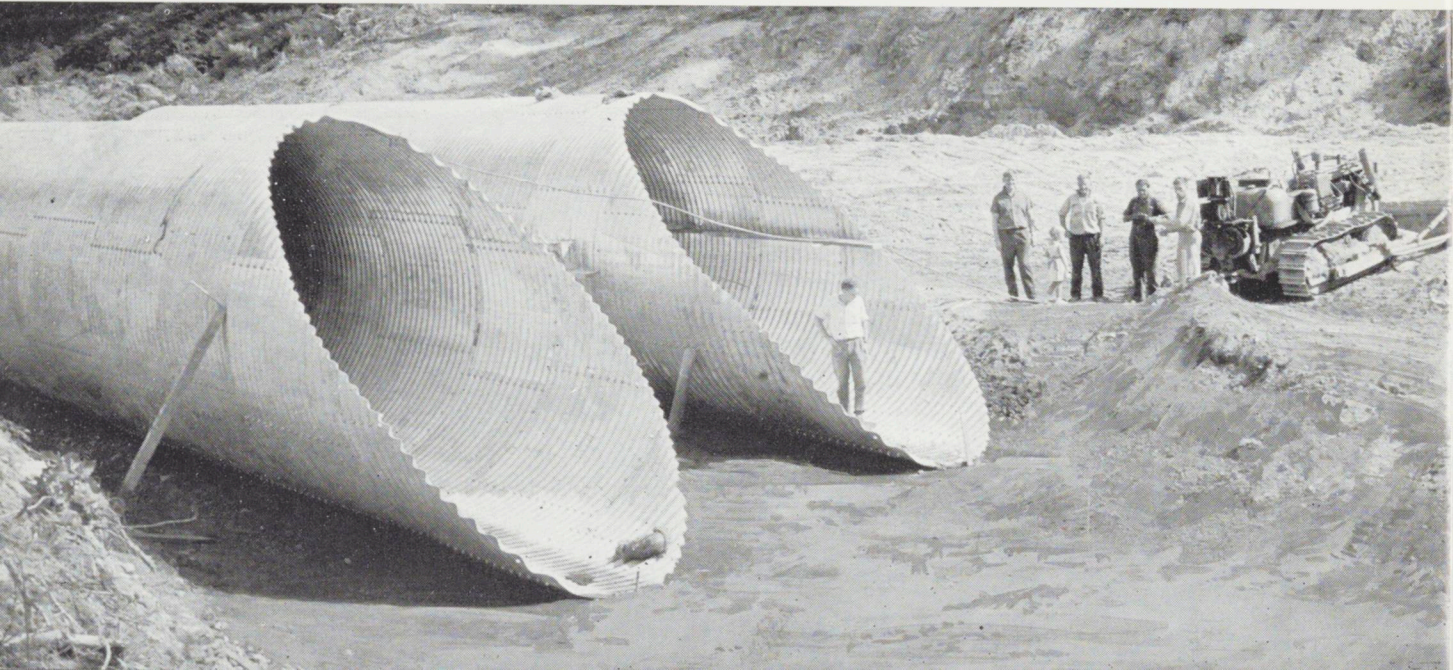
Other items include Link-Belt chain, bearings, vibrating screens, power transmission products and Babcock-Weitz telescopic horizontal jib tower cranes, a new type of which will shortly make its appearance on Christchurch's skyline on the Bank of New Zealand building in Cathedral Square.

Besides promotional work and providing technical assistance for existing lines, the Agency Division is concerned with new types of products in the industrial engineering and civil engineering fields, and is interested in discussing marketing with Overseas and New Zealand manufacturers.

The Agency Division operates from Auckland with J. K. (Ken) Winton as Manager.

Above: An Armco multi-plate pipe 108 in. in diameter under assembly for Raglan County Council. County Engineer is J. A. Harris. Below: Armco twin multi-plate pipe structure at Mokau-te-Ure, Atiamuri, during installation. The County Engineer, Taupo County Council (Bruce

Burton) is on the left of the group watching the work and his assistant (Peter Crawley) is standing in the pipe. The consulting engineers are Andrew Murray and Partners of Auckland. The diameter of the pipe is 144 in. and the culvert is 102 ft. long.





A NEW ROLE IN RUGBY

Fletcher Merchants' salesman, Frank McMullen, made the main front page picture of the Auckland Star recently, when the former All Black took the field for the first time as a referee for a game between King's School and College Rifles 12th Grade.

Farewell to Lou Hahn

Last issue we reported the retirement of J. L. (Lou) Hahn after 15 years with Fletcher Timber and Butler Bros. Here are two photos taken at the farewell function. Below: the Managing-Director of Fletcher Timber (A. T. Jewell) making a speech. Right: Lou and Mrs. Hahn with K. A. Civil (General Manager, Fletcher Timber).



ROTORUA PICNIC



NEARLY 200 staff and families attended this year's Rotorua picnic. Most popular with the young fry were the slides made by the maintenance carpenter, Stan Kerr. The children shot down the slides at a rate of 2,000 an hour.

To fuel up the athletes, Sonny Hakaraia and his assistants open up the hangi (bottom right). The athletes shown (bottom left) are Wi Tamarapa breasting the tape, followed by Ken Civil, Noel Farmer and Ian Martin.





Add beauty, comfort, protection, value to your home with this easily constructed shelter wall in **Durolite**



This attractive and practical shelter wall constructed with three, 3' x 7' sheets of translucent green Durolite on a frame of 3" x 2" timber with 2" x 1" battens in a staggered pattern provides privacy and shelter on the patio of an Auckland home. The screen is hinged and moves easily on a castor wheel to afford full protection to the sundeck from wind in any direction. When fully opened it so divides the sundeck that it is possible to sit on either side. Thus in one position or the other it gives protection to the sundeck from breezes in three directions and the house itself stops wind from the fourth. Enjoyable outdoor living is therefore possible at all times regardless of the direction of the wind.

While forming a barrier to wind and rain translucent Durolite panels permit a pleasant diffused light. Durolite is specifically designed for New Zealand conditions, is unaffected by temperature change, wind rain or sun and contains special polyester resins which resist the damaging effects of ultra-violet rays, highly concentrated in New Zealand. Durolite has been tested over long periods in actual use and is guaranteed 100% weatherproof. It is rot-proof, mildew-proof, resistant to acids and fumes, safe and strong and maintenance free.

Reinforced yet lightweight, Durolite requires a minimum of light framing resulting in substantial savings in construction costs over non-fibreglass substitutes. Also ideal for gable-end protection, patio and carport roofs. Durolite is available translucent or opaque, clear or in shades of primrose, green, rose or blue. It is manufactured in nine profiles (corrugations) or in flat sheets in standard lengths of 3' to 10' (larger lengths on order).

For further information or name of your nearest stockist, write to Fletcher Industries, Private Bag, Auckland; P.O. Box 121, Rotorua; P.O. Box 468, Napier; P.O. Box 307, Palmerston North; P.O. Box 2052, Wellington; P.O. Box 1168, Christchurch; or P.O. Box 973, Dunedin

Manufactured by

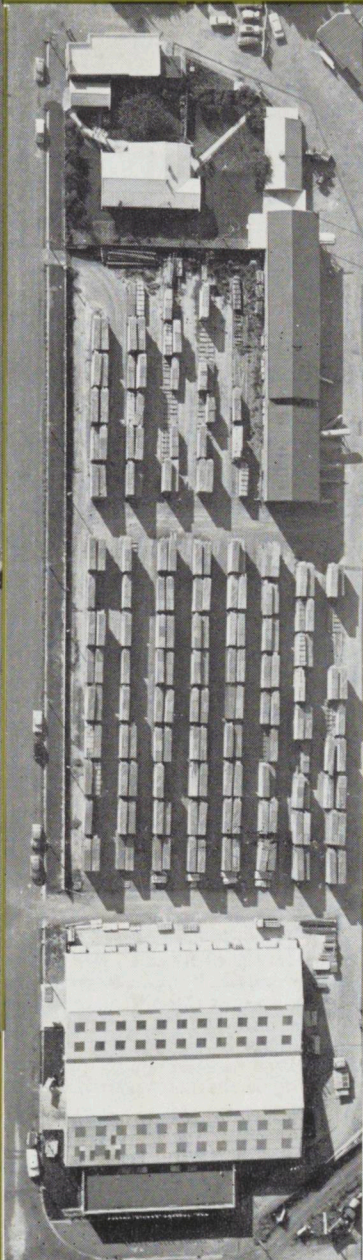
FLETCHER
industries

AK 2345

Durolite is a registered trademark owned by The Fletcher Industries Limited.

**INTRODUCING
THE
BUTLER GROUP**

Pages 16-18



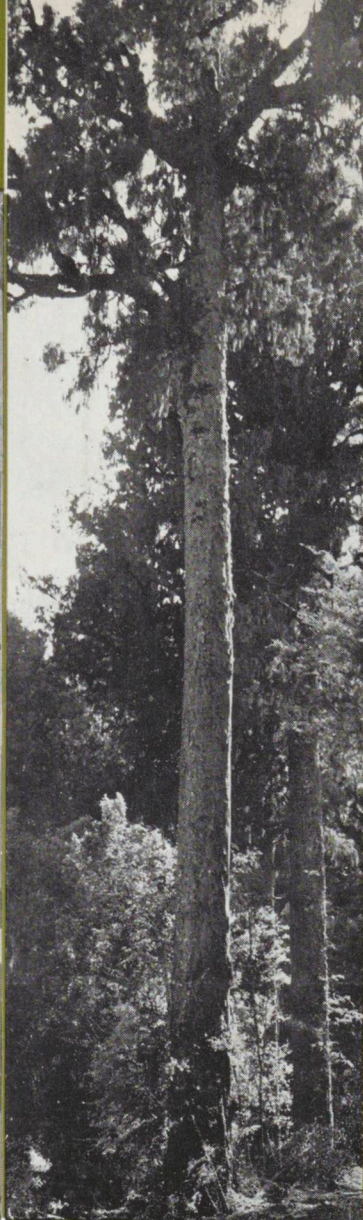
**LYTTELTON
ROAD TUNNEL
OPENED**

Pages 12-14



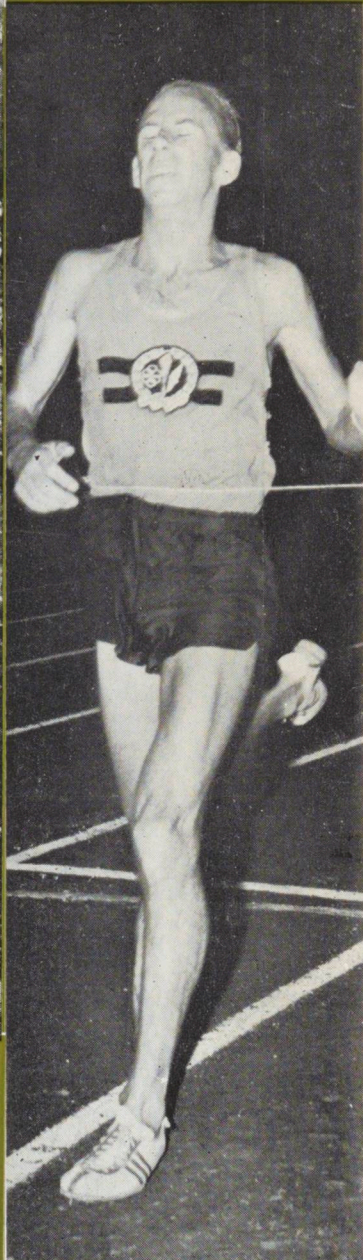
**WAIPARI
TIMBER
COMPANY**

Pages 1-4



**PRE OLYMPIC
ATHLETIC
MEETING**

Pages 5-8



in this issue

Arrowhead



Winter 1964