

ARROWHEAD CHRISTMAS 1963



CHRISTMAS MESSAGE

FROM J. C. FLETCHER, MANAGING DIRECTOR

THIS time last year the ubiquitous New Zealand punter and the not so ubiquitous local bookmaker would have been at one in laying the odds on the near certainty of Britain entering the European Common Market. In the event the favourite did not even get a run, but, as we have been warned, New Zealand thereby was reprieved, not pardoned.

This and other events have resulted in 1963 being kind to us and, in contrast to 1962, the year ends with buoyant prices for all our main primary products.

But we must realise that the brighter look of 1963 is due purely to luck. It was not that we had reared a new winner, but that the going favoured our old well-trying horse. Next year we may desperately need a new winner. Our old favourite could so easily become a doubtful place getter.



But the threat of E.E.C. and adverse marketing prospects generally a year ago did some good. Until recently a wrapper of cotton wool composed of traditional marketing arrangements and agreements insulated New Zealand against the winds of change in the outside world and we had almost lost the urge and the incentive to pioneer and or lead in the fields that have made this country great.

In the past year, particularly, some real efforts have been made by New Zealanders to seek out new

markets and to diversify our range of export products both primary and secondary. We are rediscovering our resources in materials, aptitudes and skills. We are now trying, but we have a long run ahead of us before the winning post.

Last year we spent £27 million more than we earned. The gap has to be closed and it can be closed only by a combined effort by all sections of the community, with Government giving a strong lead. Those concerned with the sale of our primary products have to find new markets, to develop processing of these products and to change packaging and presentation so that they will appeal to new customers. Those in manufacturing, too, have to look for markets overseas, and to produce new and better products at acceptable prices. Manufacturers have also to improve the standard and to widen the range of production for the home market so that the need for imports may be reduced. While we at Fletchers are not ignoring export possibilities, we feel our greatest contribution lies in the field of import replacement.

During the year our own Group has had its share of successes and disappointments—of things going well and of others badly, but, like the country as a whole, I believe we are ending the year in much better shape than when we entered it. We have a more than usually full programme for 1964, with major developments not only in new ventures, but in most of our older-established companies.

We believe that as a consequence new and greater opportunities will arise for many of our employees who wish to play a larger part in the management and control of our affairs.

To all employees I say we hope to continue to provide wider and more satisfying terms and conditions of employment within the Group so that you will all enjoy and be proud of your association with the Company.

I thank all employees for their devoted and capable efforts during 1963 and to you all and to the friends and associates of the Company I wish happy holidays, a merry Christmas and the best of health, prosperity and happiness in the New Year.

Jim Fletcher

COVERS: There is nothing Dickensian about Christmas in New Zealand and Australia, where the festival season occurs in summer. Most offices and factories close for two to three weeks and work is forgotten while we enjoy our glorious beaches, waterways and the outdoors generally.

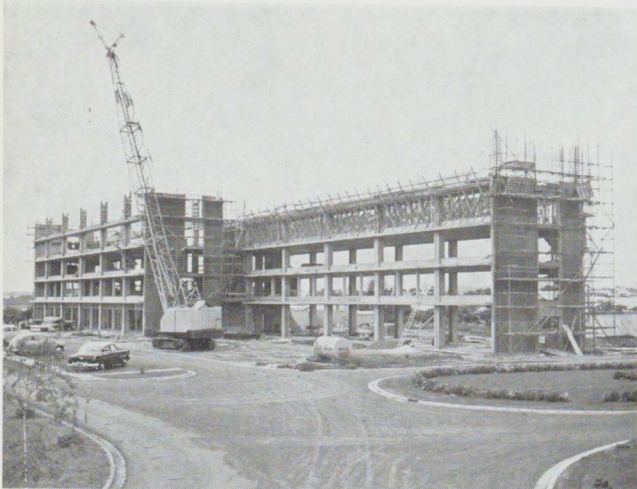


Published by
FLETCHER HOLDINGS
LIMITED

1963

Rather than attempt the impossible task of selecting the four most notable company events in 1963, we have chosen four subjects appropriate to each season and not previously recorded in Arrowhead.

AUTUMN



In the Autumn, Fletcher Construction secured the contract for the six-storey block of flats at the Auckland City Mission's Selwyn Village for senior citizens. The building will accommodate 120 people as well as resident staff, and includes library, lounges, dining, sewing and writing rooms and service block. The total cost of the project is £350,000. Architects are Kingston, Reynolds, Thom and Allardice. Contract manager is W. T. (Bill) Anderson and General Foreman is Charlie Grey. Owner's representative on the site is A. J. (Jock) Lennox, who was previously Auckland Area Manager of Fletcher Construction.

An obvious winter selection was this remarkable shot of the State "Star" flats near Rongotai, Wellington, with the snow-covered Kaikoura Ranges across Cook Strait looking as though they are only yards away, instead of 70 miles distant. Highest peak is Tapuenuku (9,465 ft.). There were five blocks of flats in this contract. Architects were the Ministry of Works. Fletcher Construction Contract Manager was W. (Bill) Lafrentz. Foremen were Eddie Adam and Jim Fielding.

WINTER



SPRING



The gardens in front of Fletcher Holdings' building in Parry Street, Dunedin, are always attractive, but keeping them that way sometimes causes problems, as was the case in this spring planting job. The tree, which had been lifted on to a truck by a crane at Green Island, could not be carried right to the hole prepared for it at the factory. Instead it was placed on a large sheet of canvas and carried, all 15 cwt. of it, to the site. Here factory workers, nurserymen and their assistants struggle to pull the tree off the canvas without disturbing the root bowl. Eventually it was necessary to lift it from the roof of the building. Shown giving a helping hand are from left: C. Voight (Industries), I. Bills, G. Crossan (nurserymen), I. Baird, N. Evans (Industries), G. Henry, K. Ellis (Lindisfarme Nurseries) and W. Reid (Transport).

Completed by Fletcher Construction in nice time for the summer season is Campbell and Ehrenfried's Poenamo (Sunnybrae) Hotel, Northcote, Auckland. Photograph shows the inner courtyard and swimming pool. The architect was George Tole, and Fletcher Construction Contract Manager was K. K. M. (Peter) Barton and Foreman Len Bain.

SUMMER



FLETCHERS IN



QUEEN STREET

CENTRE OF EVERYTHING

IN 1915 Fletcher Brothers came to Auckland to build the City Markets. That contract marked the start of the development of Fletchers from a local building partnership to a national construction company and subsequently to a diverse industrial group.

In the years which followed, many buildings of various sizes were built by Fletchers in Auckland City—so many in fact that it takes four pages to do modest justice to those in Queen Street alone, without venturing even a few yards off the main street to lower Shortland Street where we built the Government Building on Jean Batten Place corner,

the National Bank opposite it, the South British and Yorkshire House a few yards away, or to Wellesley Street where we are now building the first stage of the Science Block of the University.

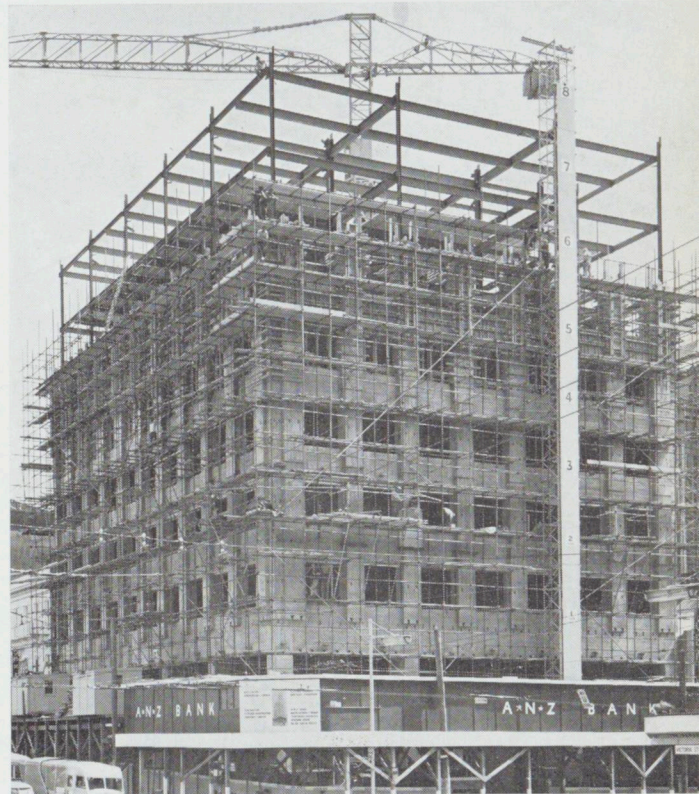
In Queen Street the first building we erected was that of Whitcombe and Tombs in 1917-18. It was followed by the Probert Building opposite the Town Hall. This

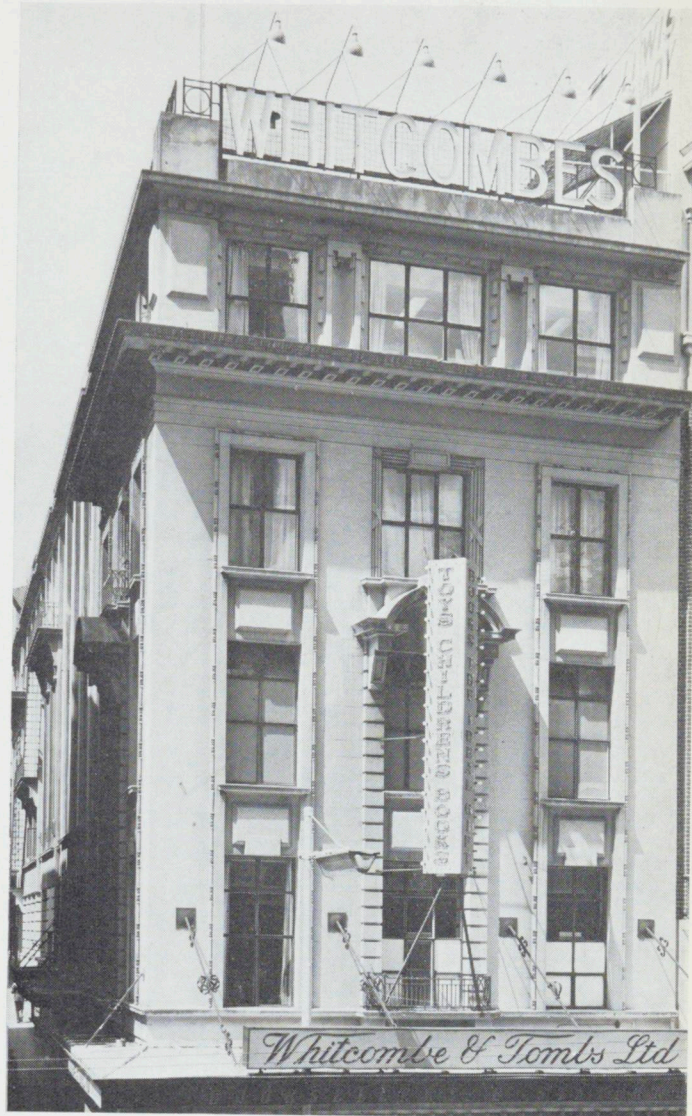
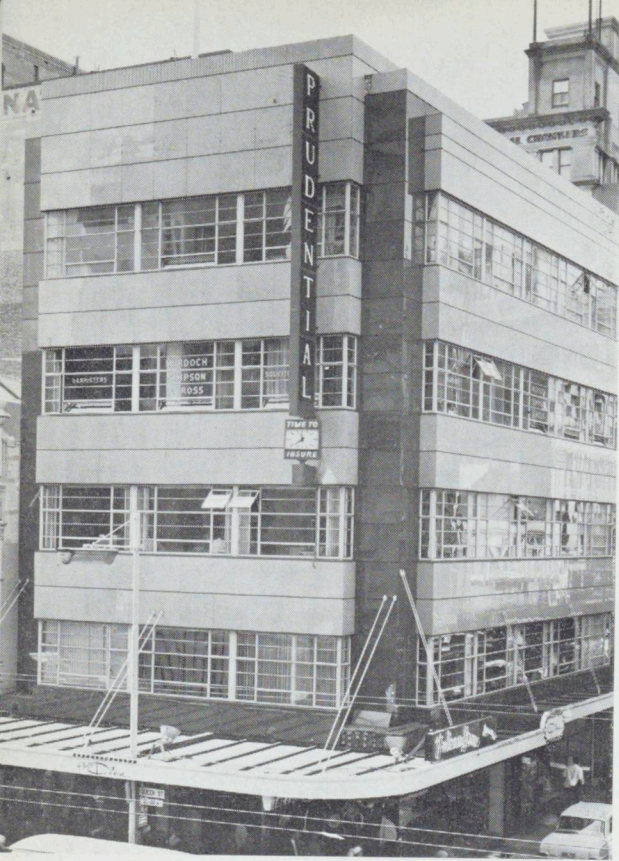
Three Fletcher buildings opposite the Town Hall. Left of the picture, the Methodist Mission Office block reaches its full height. To the right is the Probert Building which we erected over 40 years ago. This and the block occupied by Robinsons are to be demolished to make way for a church and gardens included in the Methodist Mission development. Across Airedale Street is the M.L.C. Building, one of our more recent jobs.



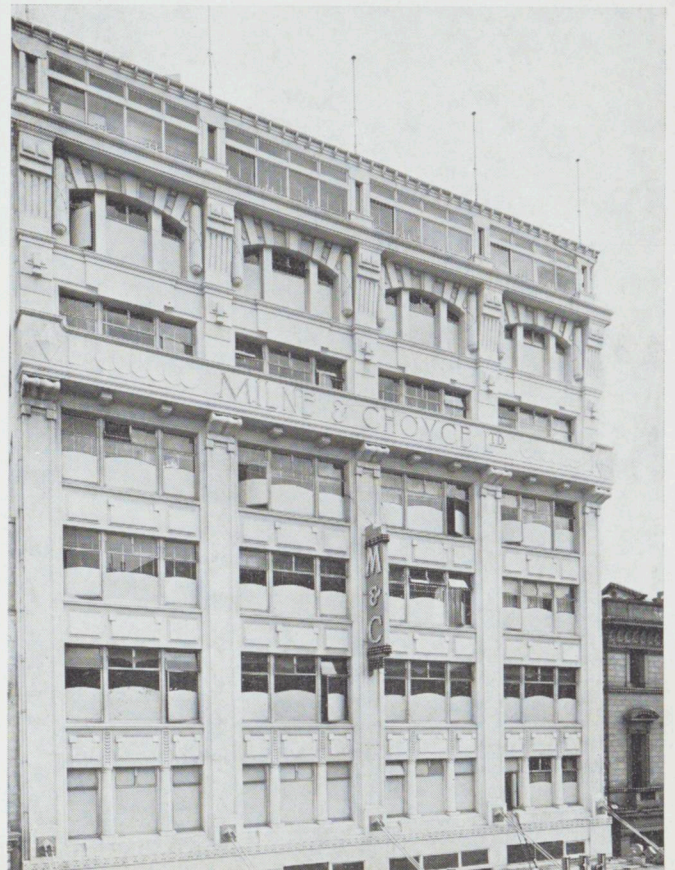


building is being demolished to make way for the Central Methodist Mission Church in front of the Mission's office block which we are now constructing. In 1920 we built Milne and Choyce, and this was followed by the C.M.L. Block, Dilworth Building, Auckland Electric-Power Board





Building, the Prudential Building on the corner of Vulcan Lane, and the remodelling of Smith and Caughey's building and the construction of the big extension through to Wellesley Street. Then came the Civic Theatre and Browne's Building (now Northern Building) at the corner of Wellesley Street. In addition to constructing the original building, we also carried out the extensive reconstruction of the building after it was bought by the Northern Building Society in 1957. The last building completed in Queen Street was the M.L.C. opposite the Town Hall.



Two more buildings in Queen Street are now in the course of construction by Fletchers—the Methodist Mission block already mentioned and the £1,300,000 A.N.Z. Bank Building.

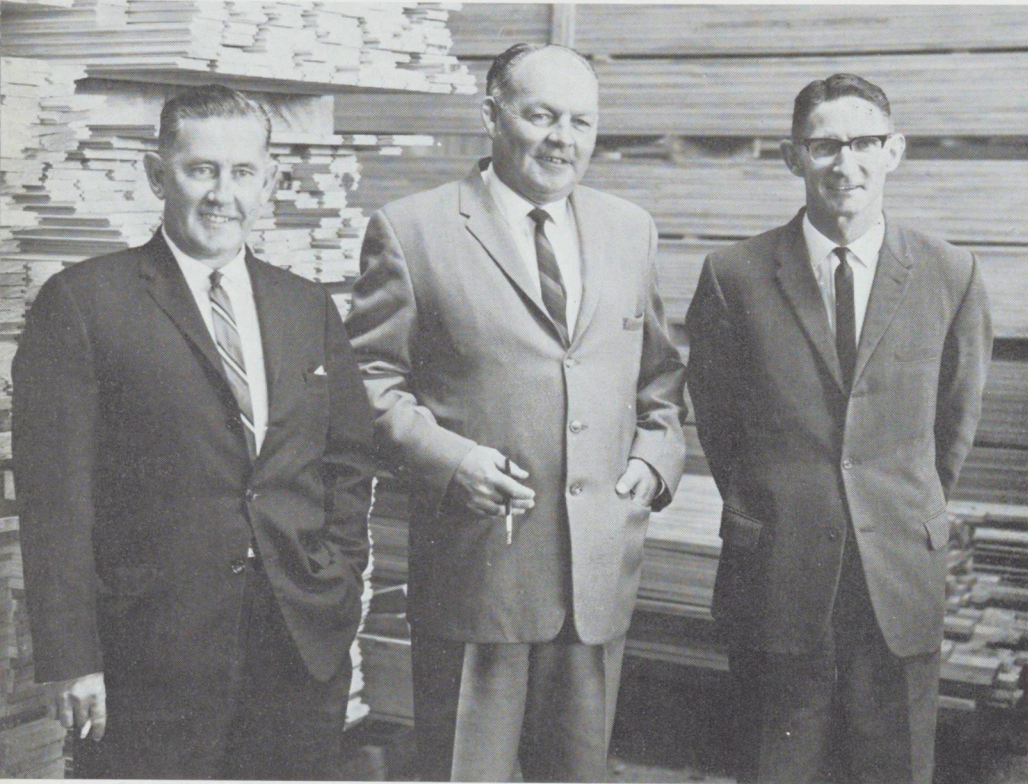
The Queen Street Businessmen's Association motif has been "borrowed" to decorate these pages and forming part of our heading is their slogan—"Queen Street—Centre of Everything". We like being there, too.

FLETCHER

merchants

RATIONALISATION OF MAJOR SUBSIDIARY COMPANIES

AS a rationalisation move, Fletchers have reorganised their Timber and Hardware Companies. The Fletcher Hardware Company Limited ceased to trade under that name on October 1. In the North Island its place has been taken by The Fletcher Merchants Limited, which is an amalgamation of Fletcher Hardware and the Merchandising Division of The Fletcher Timber Company Limited. The objective is to provide architect, builder and plumber clients and the general public with a comprehensive and more convenient service on a "One call buys all" basis.



Above: Bill Bourke (centre) with Ray Kelly and Mel Rowe. Below: Clarrie McCleary, Fred Brown and Rod Walshe. Below right: Noel Dalley.

Fletcher Timber continues to operate as loggers, millers and processors in the North Island. The former Managing-Director of Fletcher Timber, W. A. Bourke, has been appointed Managing-Director of Fletcher Merchants. He also remains a director of the reorganised Fletcher Timber. Headquarters of both companies are at Penrose.

In Bill Bourke's team are R. S. Kelly (Secretary), C. E. McCleary (Sales Manager, Timber), F. Brown (Sales Manager, Hardware), M. H. Rowe (Purchasing Manager), R. H. C. Walshe (Area Manager, Northern) and N. Dalley (Area Manager, Southern).

The former Assistant General Manager of Fletcher Timber, A. T. Jewell, becomes Managing-Director of Fletcher Timber, with J. Lord as secretary and J. B. S. Hutchinson as Sales Manager, all based at Penrose. Other senior members of Arthur Jewell's team



FLETCHER

timber

at Ngongotaha are K. A. Civil (General Manager), E. A. Lawry (Processing Manager), G. Transom (Logging Manager), S. H. Brown (Sawmilling Manager) and R. O. Grant (Chief Accountant).

Fletcher Merchants has branches at Penrose, Mt. Eden, Papatoetoe and Takapuna, in Auckland, and at Hamilton and Taupo in the Northern Region. South Region branches are Kaiwharawhara and Tawa (Wellington), and Upper Hutt. Kauri companies at Carterton, Stratford, Hawera and Constable Street (Wellington), will continue to operate under their own names meanwhile, as will Builders Supplies Limited, Newmarket, Auckland. The Lumbermart at Penrose is also Fletcher Merchants' responsibility.

Fletcher Timber has mills at Kopaki, Ruatahuna, Tatara-akina, Turangi, Wiltsdown, Edgecumbe and Ngongotaha.



In the South Island, a similar rationalisation process is being undertaken on a slightly different pattern. Fletcher Hardware ceases to exist as a separate entity, and its functions are absorbed in subsidiary companies of Butler Bros. Limited. These subsidiaries will maintain their old-established family names which are a part of South Island commercial history. In a future issue, details will be given of the company tree in the South Island and appointments made recently.

Above: Arthur Jewell (centre) with Barrie Hutchinson and John Lord. Below, Standing: Geoff Transom, Sid Brown. Seated: Jim Lawry, Arthur Jewell, Ken Civil, Roly Grant. (As we went to press it was announced that Jim will be going to Butler Bros. in the South Island next year.)

Page Nine



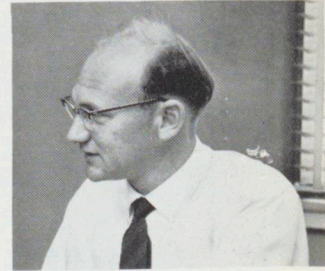
NEW APPOINTMENTS IN FLETCHER INDUSTRIES

SOME modifications have been made to the management structure of Fletcher Industries and although the personalities concerned are well-known throughout the Group, we gathered them together in the boardroom at Penrose so that we could link faces with new titles.

The changes involve the division of operations into two areas—North Island and South Island—under the control of regional General Managers responsible to the Managing-Director (Dr. J. S. Watt) and the setting up of a control group responsible for all company activities within their sphere. The functions will comprise production, sales, secretarial and accounting, and development. The Controllers will be responsible to the Managing-Director.

The "line" appointments are:— North Island Area General Manager: B. A. Henry; South Island Area General Manager: T. C. B. Cooper.

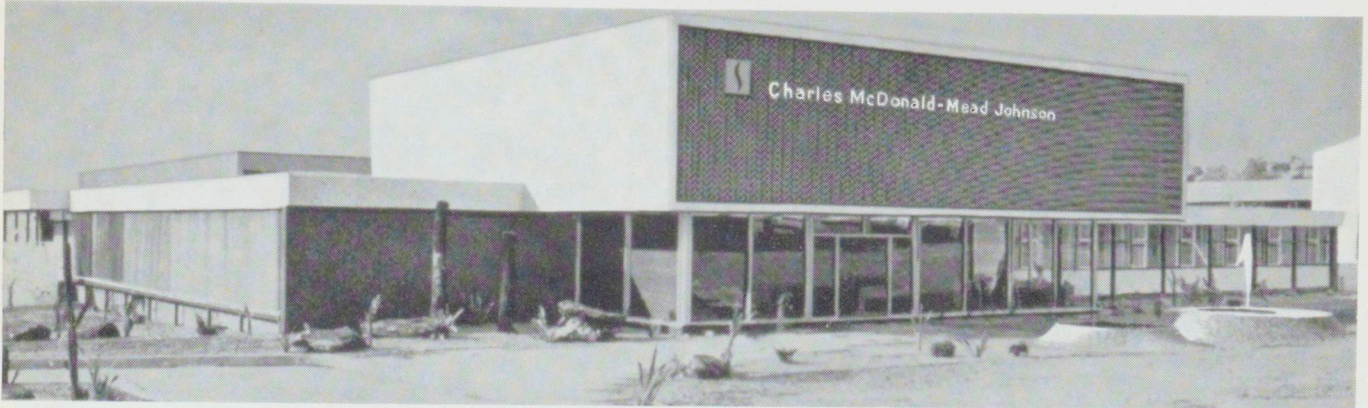
The "staff" appointments are:—Production Controller: G. C. McKay; Secretary and Accounts Controller: C. M. Gurr; Sales Controller: T. G. Hunt. R. H. Hopgood (at present a director of Fletcher Manufacturing, Sydney) will return at the end of the year to take over responsibility for development control and act as assistant to the Managing-Director with general responsibilities.



Colin Gurr (Secretary), Gordon McKay (Production), John Watt (Managing Director), Brian Cooper (South Island Manager), Trevor Hunt (Sales), Brian Henry (North Island Manager). Above: Raymond Hopgood.



FLETCHER CONSTRUCTION IN AUSTRALIA



Fletcher Construction Pty. has recently completed the expansion of the factory, office and warehouse block of Charles McDonald - Mead Johnson Pty. Limited at Caringbah, New South Wales, from a building 1,400 sq. ft. of floor space to 40,000 sq. ft. to give the clients a £250,000 building.

To maintain full production in the manufacture of pharmaceutical and nutritional products and continuous occupation by the staff, Fletchers carried out the work in a series of stages. As one part of the project was completed, plant was re-located and another part was started.

The project called for extensive alteration and renovation of the original building in addition to the extensions. The block consists of manufacturing areas, packing rooms, warehouses, sterile areas, control laboratories and offices.

The manufacturing areas are dust-free rooms with ceramic tile floors, full height glazed tile walls and smooth suspended

ceilings. All metal, including door frames and view windows, are stainless steel.

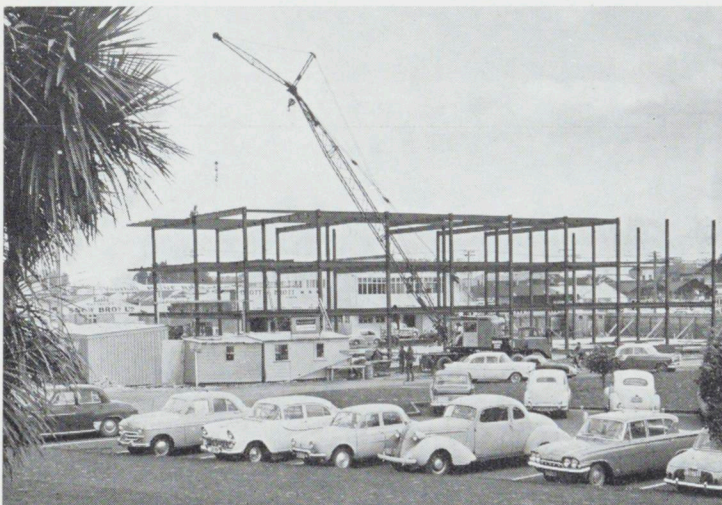
To eliminate product contamination in certain rooms, each machine is separated by glass screens.

The underside of flat metal deck roofs has been treated with sprayed asbestos to provide insulation and to eliminate damage to stock by condensation.

The original building was built in 1956 on a 40 ft. grid with components based on multiples or portion of 40 in. and, being demountable, were thus able to be re-used. Having the original design based on a repetitive unit reduced planning time on the expansion and facilitated the merging of new sections with the old building.

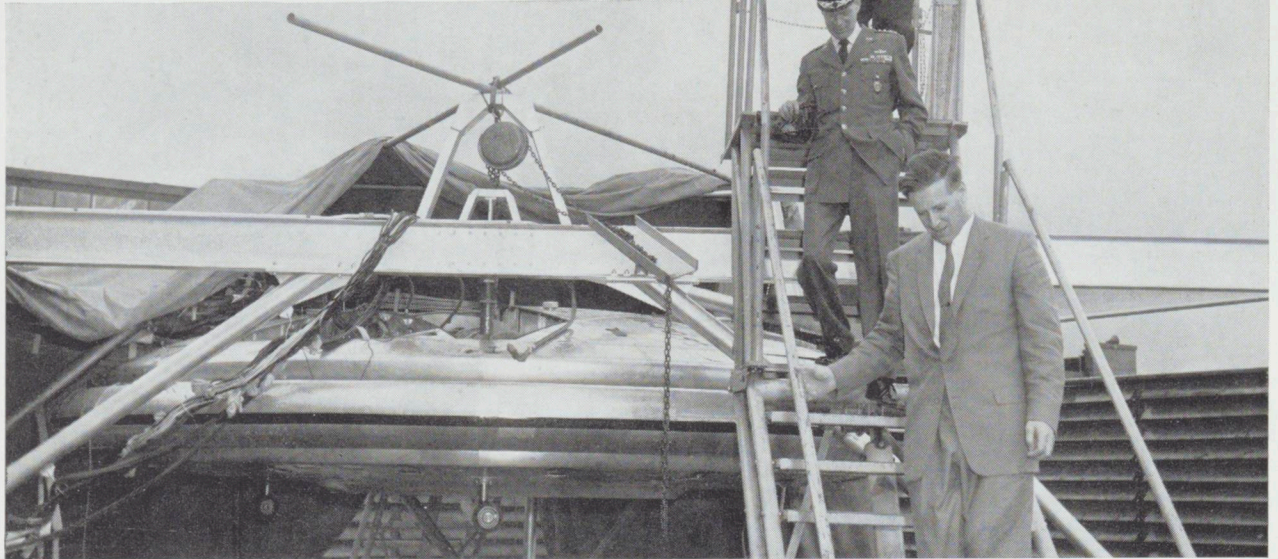
The architects were Winterbottom and Moore; structural engineers, C. G. Hughes and Murphy; mechanical engineers, Norman and Addicoat.

Illustration shows the front elevation of the completed project.



In Whangarei, the steel frame work for Fletcher Trust's modern block of shops and offices nears completion. Architect is Franz G. Iseke and Fletcher Construction are the builders. Project Manager is K. K. M. (Peter) Barton and Foreman is Frank Wilson.

V.I.P.'s AT PENROSE



AMONG Very Important Visitors to Fletchers' boardroom at Penrose in the last couple of months have been the Minister of Agriculture and Conservation, New South Wales, Hon. A. G. Enticknap, and General Lauris Norstad, former N.A.T.O. Commander, and now president of the International Division of Owens Corning, U.S.A. We happened to have a photographer taking photos at the time of the Minister's visit and so were able to get a shot of him with some of the Fletcher people. We had no such luck with the General, but John Frost (Fletcher Group Services) produced a photo of him taken when he inspected the Avrocar, a Hovercraft type of vehicle which John was responsible for developing in Canada.



From left (standing): Dr. J. S. Watt (Managing-Director, Fletcher Industries), K. G. Fraser (Managing-Director, Fletcher Group Services), Murray Pinfold (N.Z. Forest Service, Commercial Division), F. J. (Jim) Perham (Forest Consultant, Fletcher Timber), H. F. Molony (Secretary, Fletcher Holdings), A. T. Jewell (Managing-Director, Fletcher Timber). Seated: N. R. McIntyre (Minister's Secretary), Hon. A. G. Enticknap (Minister for Agriculture and Conservation, N.S.W.), W. Muir (Forest Commissioner, N.S.W.), J. C. Fletcher (Managing-Director, Fletcher Holdings).

In top photo: John Frost (at bottom of ladder) followed by General Norstad (in uniform).

LONG SERVICE PINS AWARDED

SEVEN hundred and fifty years of service are represented in the latest list of awards of 20 and 30-year service pins. Best record is that of S. G. (Stan) Riggs (Fletcher Merchants) who has chalked up over 45 years service with Kauri and Fletchers. He has been in head office, at Fanshawe Street, at Papatoetoe, at Penrose and twice at Mt. Eden Branch, where he is now, and where the photograph (below left) was taken. While Stan was at Penrose he represented Kauri on the Pricing Committee. He is a keen sportsman and was a member of the Kauri Cricket Club in inter-house competitions. Now bowling is his sporting interest and he has represented the Merchants against the Builders in annual tournaments. Stan retires this Christmas.



STAN RIGGS

Fletcher Construction: L. C. Bain, K. K. M. Barton, R. F. Caulton, S. A. R. Haslip, W. T. Perry, F. Towler (Auckland), C. Kilgour (Dunedin).

Fletcher Merchants: D. Milnes, R. Owens, W. J. Hodgson, T. J. Smith, D. J. Whale, S. Edlin, J. Athy (Northern Region).

Only five years behind his service record is another Merchantman, G. (George) Wensor. George started with Ellis and Burnand at Mangapehi in 1912 and came to Kauri (now Fletcher Merchants) at Papatoetoe in 1953. He retires from Papatoetoe this Christmas.

Other 30-year pins go to W. A. (Bill) Bourke (see page 8), and E. C. (Ted) Mathews (Fletcher Merchants, McNab Street), T. T. ("Nui") Robins (General Manager of Redpaths, Christchurch), R. W. L. Darroch (of Redpaths, Wellington) and W. H. (Wally) Watson, of Fletcher Bernard-Smith at Otahuhu. Wally's photo appears second from top right.

Top right of the page is C. J. (Cecil) Hunt, of Kauri Sawmills, Edgumbe, who was in the Autumn list of long-service pins. Since then we have received some notes on his service and find that he had over 60 years to his credit when his pin was presented. Cecil joined Kauri Timber in 1901 at Aratapu, Northern Wairoa. In 1927 he went to Edgumbe to run the loco carting sleepers from the tramline to the Matahina Bush. He ran the loco until 1938 and was later in the mill. In 1949 he helped build the Tawa Mill and when this work was completed became night watchman—a job he has been doing ever since.

20-YEAR PINS

Fletcher Bernard-Smith: H. D. Frazerhurst (Auckland).

Butler Bros.: B. Horniblow (Christchurch).

Redpaths: I. R. Perica (Wellington), J. F. Berry (Christchurch).

McCallums: G. Beckwith (Dunedin).

Fletcher Industries: R. H. Hopgood, C. M. Gurr (Head Office), J. Elvines (Brooks), E. Thomas (Plywood, Auckland), D. Pratt (Manunui), D. Robb, C. Evans (Dunedin).



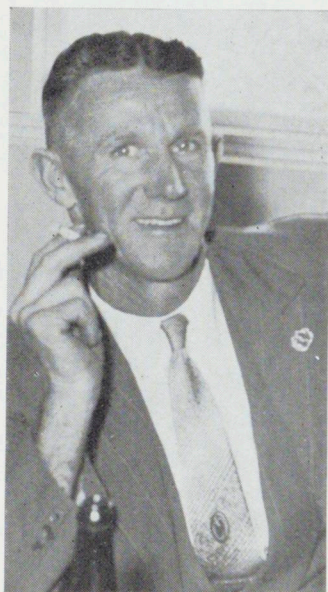
CECIL HUNT



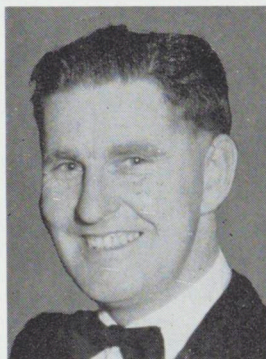
WALLY WATSON

Photos at left are of Jack Elvines and H. D. Frazerhurst. Photos of Raymond Hopgood and Colin Gurr appear on page 10.

Fire Brigade Funeral for Kauri Man



Firemen from the Bay of Plenty, Kinleith and Mata-mata joined with local volunteers at Edgumbe to pay their last respects to W. L. McIndoe, of Kauri Sawmills, who was killed in an accident. Wally, who had been with Kauri for ten years, was Chief Fire Officer of the Kauri Sawmills Volunteer Fire Brigade. He was also on the Edgumbe School Committee, an active member of the Edgumbe Progressive Association and a member of the Taumarunui Pipe Band. Earlier he was chairman of the Taringamutu School Committee for five years. His sport was tennis. Wally was born in Auckland in 1914, but had lived in the Taumarunui district for 23 years. Our sincere sympathy is expressed to Mrs. McIndoe and family.



INTER-COMPANY GOLF TOURNEY IN AUCKLAND

The 1963 Auckland Inter-Company Golf Tournament was held on 13 October under ideal conditions at Pukekohe Golf Club. Teams were entered from each company and the scoring was so even that winners could not be decided until the last card was in.

John Simkins and Gordon McKay won the Inter-House Cup for Industries with a total of 73 points. Other successes were:— Best Individual Stableford, J. Simkins, 38 points; Best Nett Medal, J. R. Humphreys (Trust), 69 points.

*Fletcher Holdings
Annual Ball
1963*



Carolyn Winch and Kay Tattley, both Fletcher Trust, with husbands.



Ian McLachlan (Fletcher Steel) and friend.



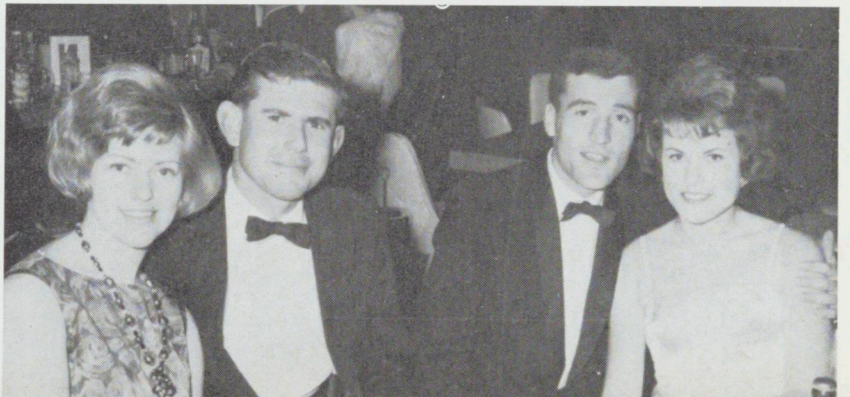
Neil Weatherspoon (Fletcher Bernard-Smith) right, and party.

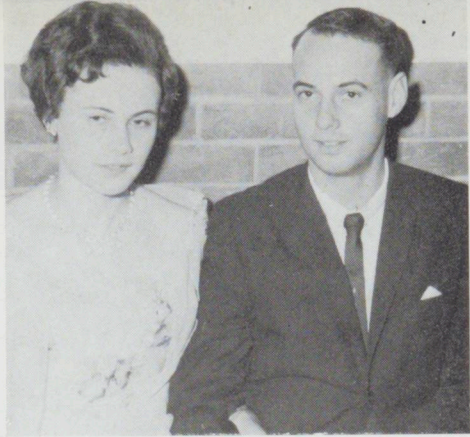
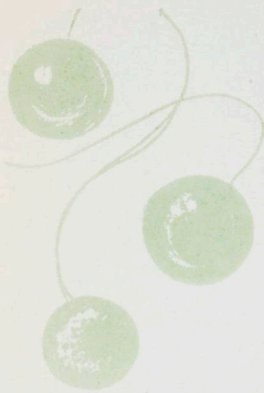


Dennis Leicester (Fletcher Industries) and partner. Below: Frank Tuck (Industries) and guest.



Jack Smith and Geoff. Gilchrist (Fletcher Merchants) and party. Below: Beverley Clark (Group Services) right, and friends

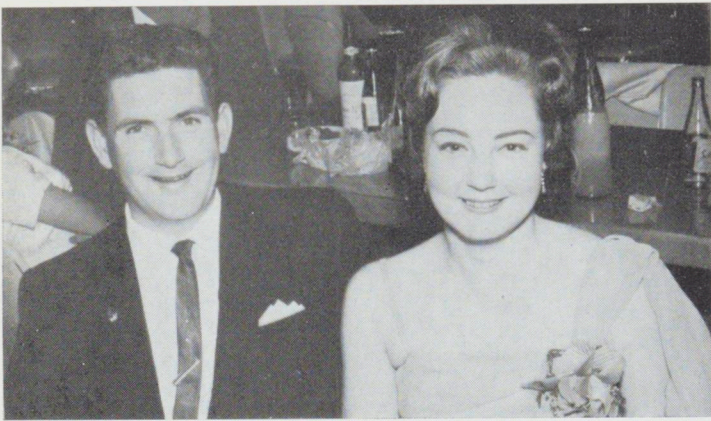




Eddie James (Group Services) and friend.



Allen Wilson (Fletcher Steel) and Mrs. Wilson.



Marlene Anderson (Industries) and husband.



Lloyd Jensen (Fletcher Trust, Wellington), and Mrs. Jensen.

IN THE NEWS



Left: Malcolm Aim (Fletcher Construction, Wellington), who scored the first century in Wellington senior cricket this season with 105 for University.

Right: Mrs. D. J. Dennehy, photographed with her three-weeks-old triplets shortly before they left Karitane Hospital to join their father, Dan Dennehy (Fletcher Industries Plywood Division, Christchurch), and the other six children in the family.



