

Arrowhead

SPRING 1962



National Airways Corporation's New Auckland Centre.

FLETCHER
Arrowhead

Published by
FLETCHER HOLDINGS
LIMITED

GREAT SOUTH ROAD, AUCKLAND, NEW ZEALAND

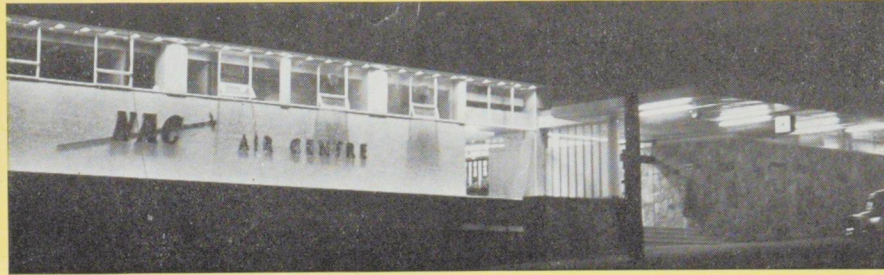
FRONT COVER: The close conjunction of the evening star, Venus, with the crescent moon was widely observed by Aucklanders in July. This photograph was taken near the Southern Motorway, looking towards the floodlit monument on One Tree Hill. In the foreground are the Fletcher buildings at Penrose with the chimney of the plywood factory standing out prominently.

FLETCHERS BUILD

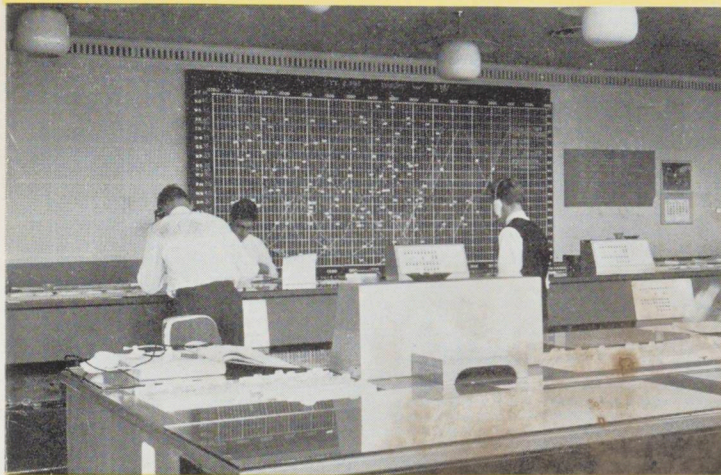
NEW NAC TERMINAL FOR AUCKLAND

Because it is a building which will be widely used by the public, N.A.C.'s new air centre in Graham Street, Auckland, has attracted general interest. Architects for the £450,000 building were Lewis Walker and Hillary, and the engineers, Gray, Watts and Beca. Clerk of Works was former Fletcher Construction foreman, Jim Mortimer. Contract Manager was George Bourke and Len Bain was foreman.

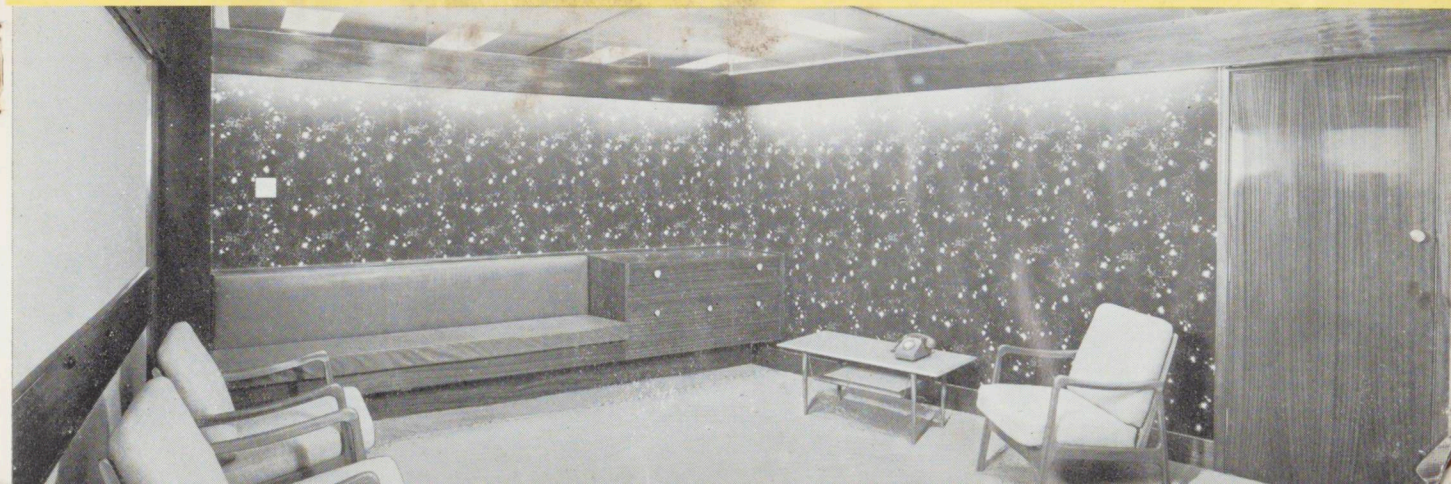
On the facing page is an artist's drawing of the completed building.



ABOVE, LEFT TO RIGHT: Maori carving in the passengers' lounge. The public entrance at night. Jim Mortimer, Clerk of Works.



ABOVE: Traffic control room (left). Boardroom (right). BELOW: Reception room for V.I.P.'s.

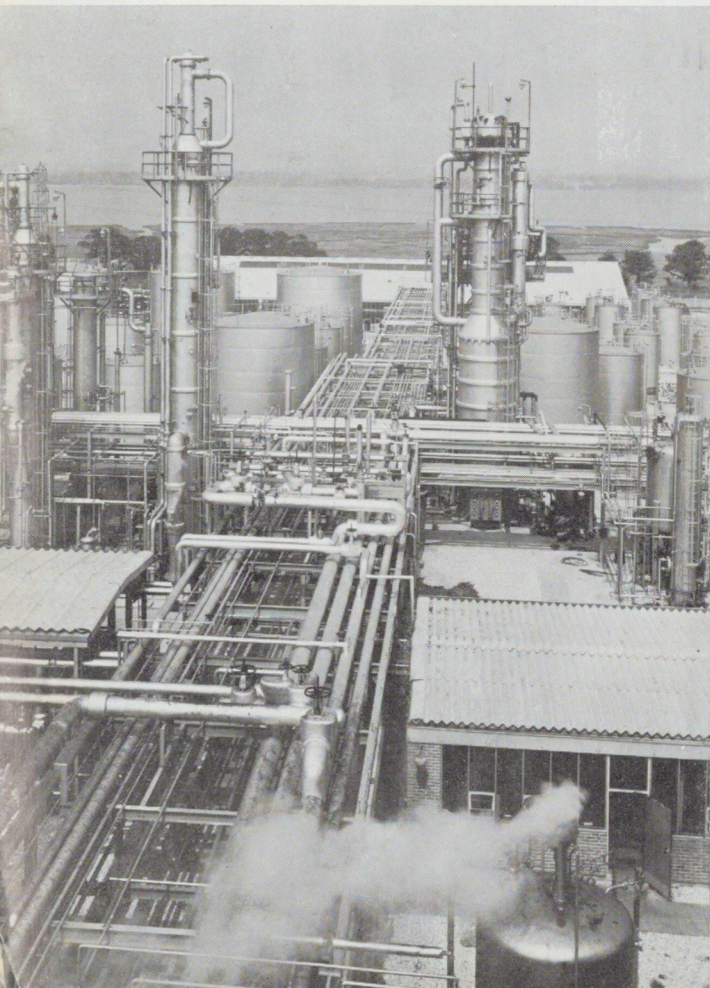


INTRODUCING GEORGE WIMPEY & CO. LIMITED

PARTNERS AT WHANGAREI FOR OIL REFINERY CONTRACT

In our Autumn issue we announced the award of the contract for New Zealand's first oil refinery to a joint venture group, Bechtel-Fletcher-Wimpey. In an earlier issue we had shown examples of recent contracts by Bechtels and on this page we introduce the work of our other associates in the joint venture, George Wimpey & Co. Limited. Project Manager, L. D. ("Larry") Pitchford, and E. C. ("Bud") Stone, Office Manager, and E. C. ("Bud") Stone, Office Manager, both from Bechtels, are on the job at Whangarei as is also our Engineer, John Turnbull.

Products Pipework and Tank Farm, Hythe, Hampshire (for Union Carbide)



Kent Oil Refinery, Isle of Grain (for British Petroleum).



Aden Oil Harbour (for British Petroleum).



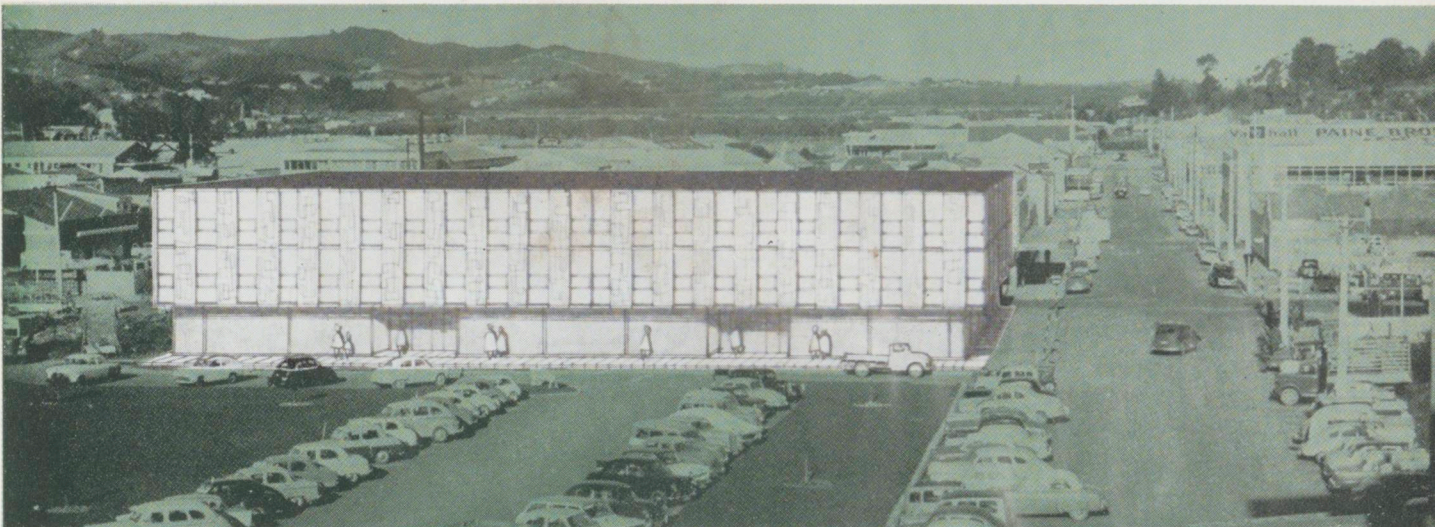
Queen Elizabeth II Grandstand, Ascot.

OLD PENROSE LANDMARK DEMOLISHED

In September one of the oldest industrial buildings in Penrose—Pearson's sandsoap factory—was pulled down. Pearson's were established in Hamilton in 1885 and came to Penrose at the end of World War I. Branches were also opened in Australia and England, and Pearson's sandsoap became a household name in many countries. The property was purchased by Fletchers in 1953. In recent years the old factory, next to our plywood and door factories has provided temporary quarters for Brooks Partitions. Now some of the salvaged materials, particularly the Oregon trusses and joists will be incorporated in a training shed for The Mt. Wellington Rugby Club. The Club bought the building for £150 which was subsequently refunded as a bonus for the expeditious way in which the club's volunteers removed the building and cleared the site.



New one planned for Whangarei



An artist's sketch superimposed on a site photograph to show the three-storey commercial block being built in Whangarei by Fletcher Trust. The ground floor, accessible on all sides, is for shops and the two upper floors for offices. The building is at the corner of Rathbone and Robert Streets, a short distance from Cameron Street. Total floor area is about 30,000 sq. ft. and will be leased. The modern design incorporates two arcades through the shopping area.

SOMETHING UNUSUAL IN UNDERPINNING

Fletcher Construction's contract for the multi-storey Methodist Mission Centre in Queen Street, Auckland, has involved some problems on the muddy and confined site, especially under winter conditions.

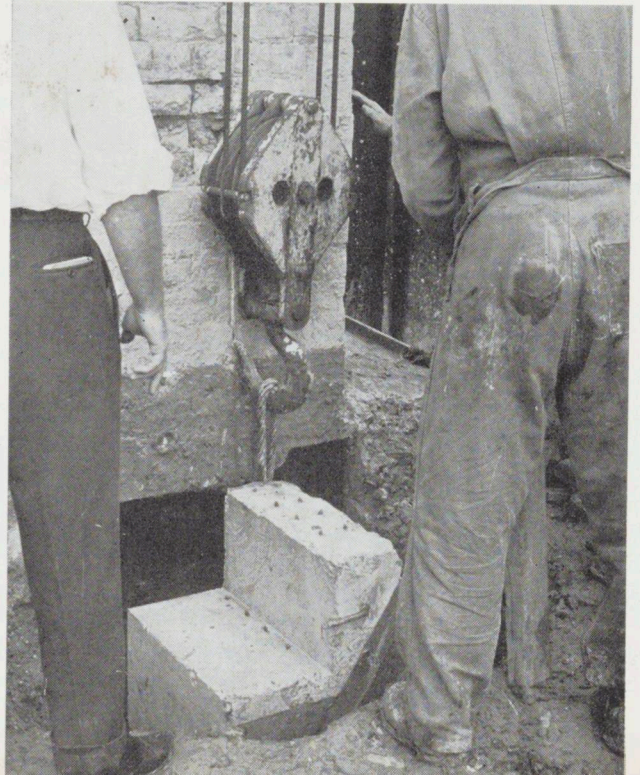
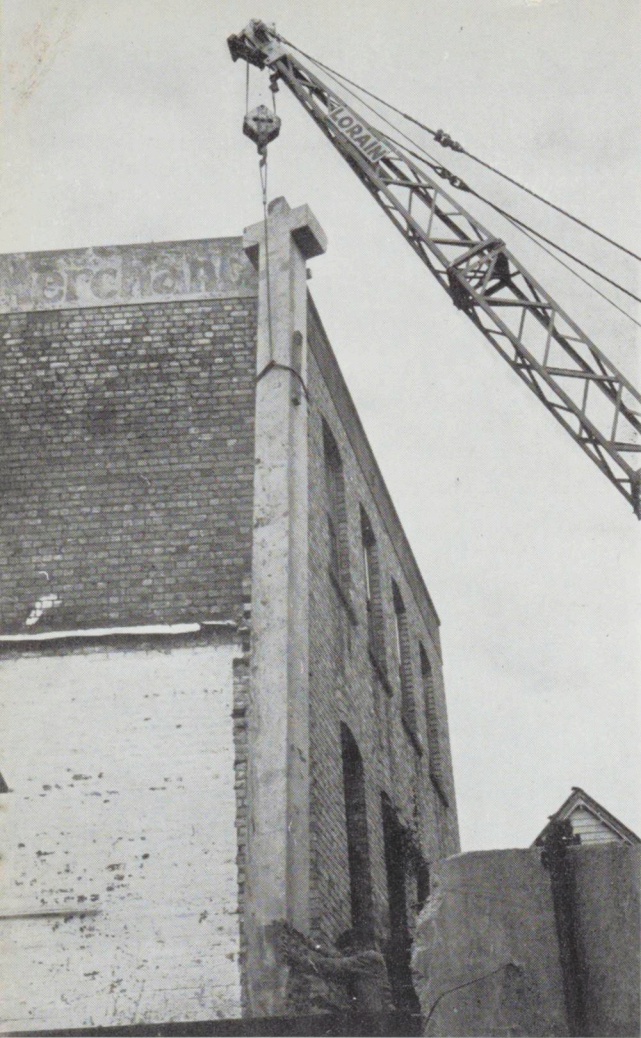
A neighbouring building owned by the A.N.Z. Bank is of brick construction and required under-pinning before the main excavation on the Methodist Centre could be carried out.

Instead of sinking shafts and constructing sections of wall to fully support the neighbouring building, reinforced concrete pre-stressed columns over 30 ft. long were supplied by Certified Concrete and lowered into holes which had been mechanically bored.

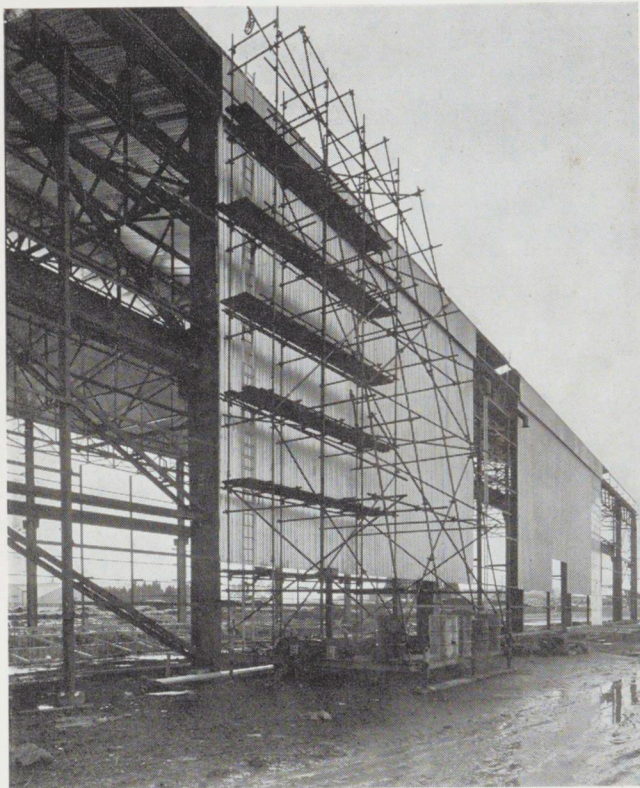
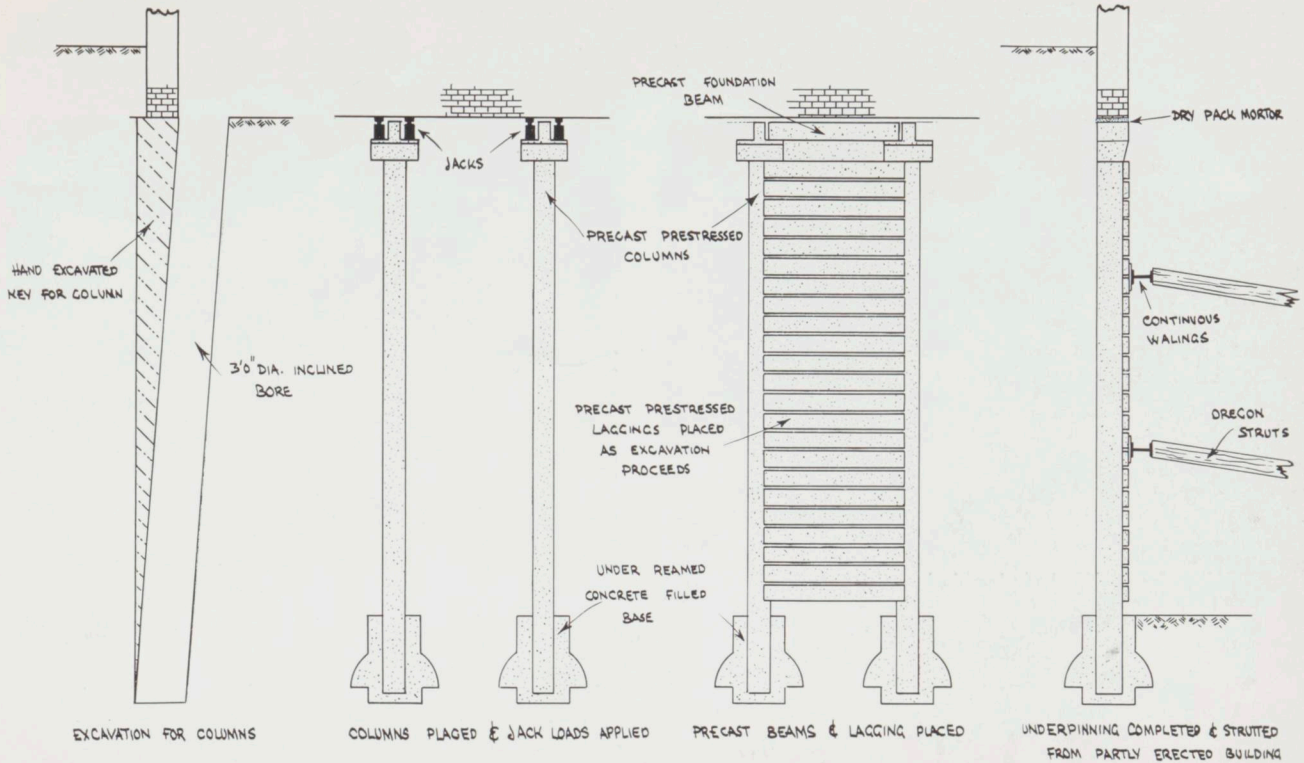
These columns, spaced at 8' 5" centres were placed by mobile crane at an angle and then moved over to take up plumb position under the wall. Concrete was placed at the toe of the columns and hydraulic jacks on the shoulders of the columns took the load of the wall. A pre-cast concrete beam connected the heads of the columns and, as excavation proceeded, pre-cast concrete laggings were bolted to the columns to prevent the adjoining ground from moving.

The whole operation was carried out successfully and much more quickly and economically than by the normal methods. Gary Searchfield designed the scheme; on the site, Trevor Heford is Project Manager and Peter Fowler is General Foreman.

TOP LEFT: Column being moved into position prior to lowering into hole. BELOW LEFT: Column just entering bored hole (note roughened area at base for bond to poured concrete). BELOW RIGHT: Column at full depth ready to be moved under wall.



METHODIST CENTRAL MISSION, AUCKLAND

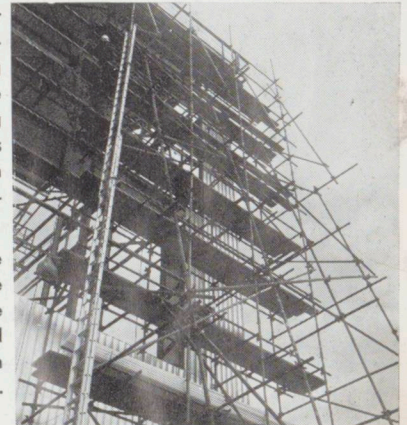


MOBILE SCAFFOLDING PROVES ITS WORTH

Mobile scaffolding designed and built by the Plumbing Division of Fletcher Construction, Auckland, under the management of Tom Kerr, has now proved its worth on several contracts.

Originally it was designed for use on the Pacific Steel contract where the accompanying photographs were taken. The scaffolding has a working height of up to 70 ft. and is fully mobile. The drums on the carriage contain counterweights.

The mobile scaffolding has the advantage of keeping the site clear of all but the area where work is being carried out, and it cuts costs compared with the rental of static scaffolding.



PACIFIC LUMBER

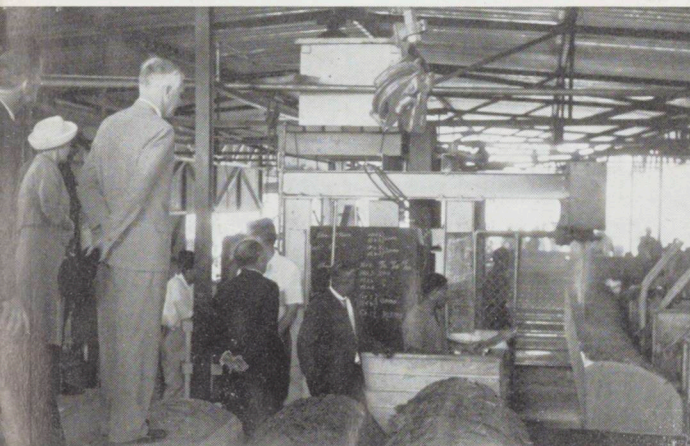
OFFICIAL OPENING BY FIJI GOVERNOR



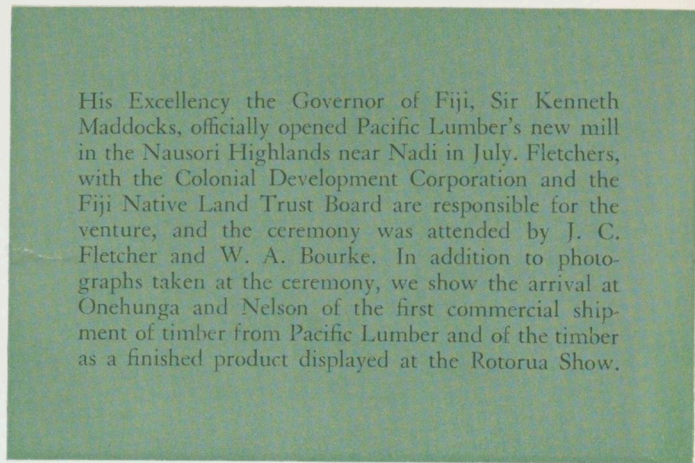
ABSORBING MOMENT: Lady Maddocks and W. A. Bourke watching the tree-felling. Sir Kenneth is immediately behind them and to his right is G. I. Firmston-Williams (Colonial Development Corporation), chairman of directors of Pacific Lumber.



A FINE SPECIMEN OF FIJI KAURI: Looking on are J. C. Fletcher, W. A. Bourke and the Governor.



IN THE MILL: Sir Kenneth and Lady Maddocks watching the saw in operation.



His Excellency the Governor of Fiji, Sir Kenneth Maddocks, officially opened Pacific Lumber's new mill in the Nausori Highlands near Nadi in July. Fletchers, with the Colonial Development Corporation and the Fiji Native Land Trust Board are responsible for the venture, and the ceremony was attended by J. C. Fletcher and W. A. Bourke. In addition to photographs taken at the ceremony, we show the arrival at Onehunga and Nelson of the first commercial shipment of timber from Pacific Lumber and of the timber as a finished product displayed at the Rotorua Show.

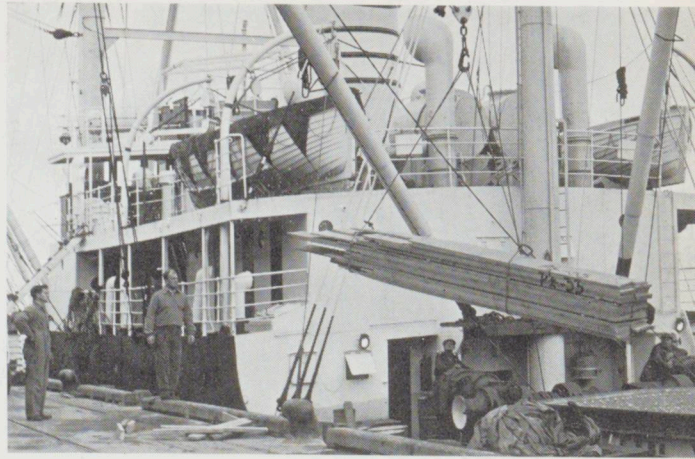
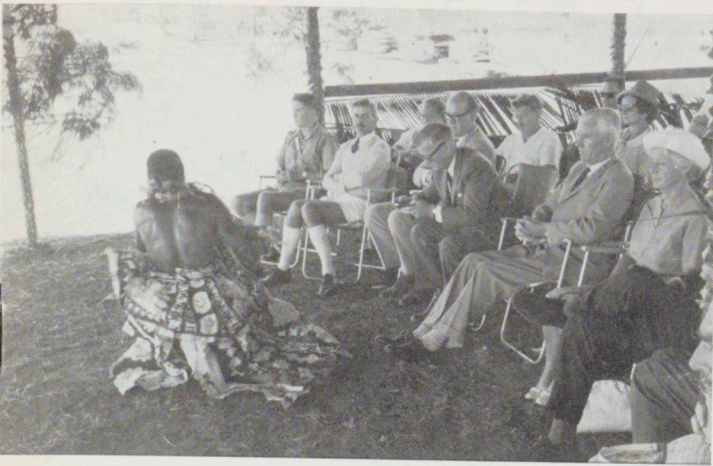


IN THE YARD: Pacific Lumber Manager, Roy Shirley (from Rotorua) with Sir Kenneth and Lady Maddocks.



READY FOR EXPORT: Timber stacked in the yard ready for sale in Fiji and export to New Zealand.

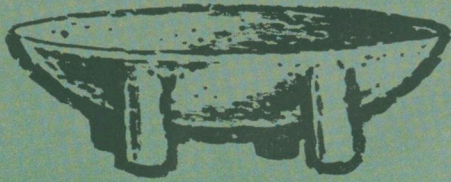
FIRST SHIPMENT ARRIVES IN NEW ZEALAND



J. C. Fletcher receives a ceremonial bowl of yagona (kava), the traditional Fijian drink (*Above*).

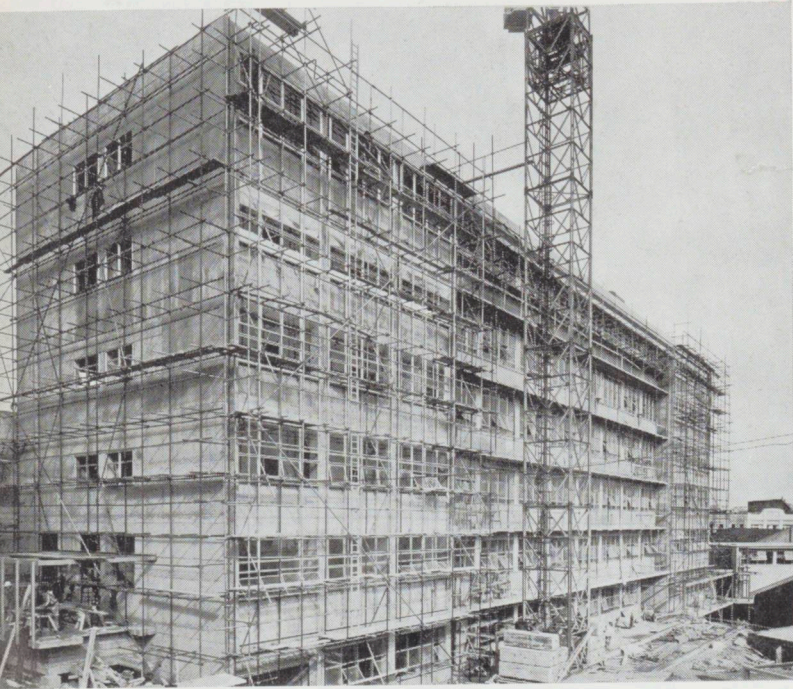
Timber from Pacific Lumber is unloaded at Onehunga, Auckland (*Top Right*) and in the yards of J. D. & L. Robertson, Nelson.

Glamour Wall manufactured from Fiji timbers on display at the Rotorua Show (*Below*). Contrasting panels of gaily-painted Weldtex made a striking wall exhibit.



Construction in Auckland

First stages of the foundations for the Kerridge-Odeon Building in Queen Street (right). Architects are Rigby Mullan; Engineers, Gray, Watts and Beca. Contract Manager is George Bourke and George Kempster is Foreman. **STARTING** ▶

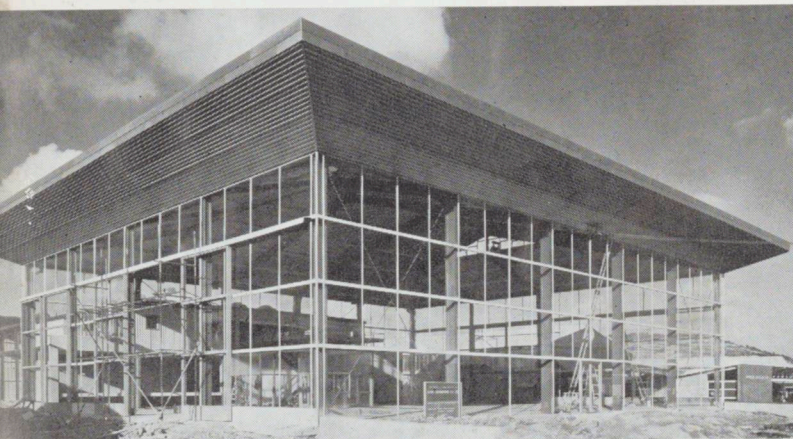


▲
WELL ADVANCED

The new Seddon Memorial Technical College Building, designed by C. Irwin Crookes and Galloway. Contract Manager is George Bourke and Foreman is Chas. Clews.

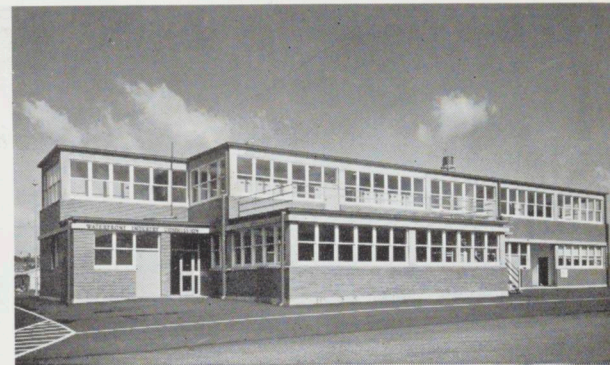
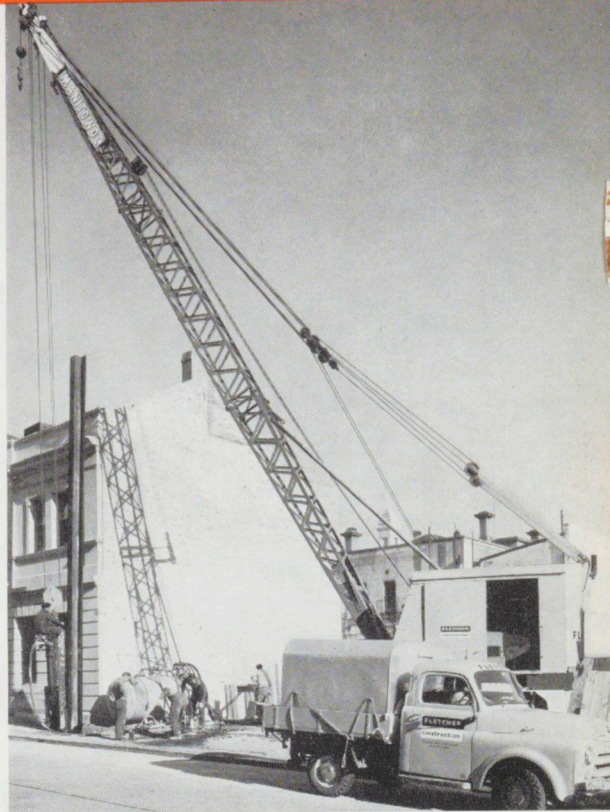
Clyde Engineering's new building in Great South Road. The striking design was by Thorpe, Cutter, Pickmere and Douglas. Bill Anderson was Contract Manager, and Foremen were Chas. Clews, Johnny Wright and Jim Lawry.

▼
ALMOST COMPLETED



▶
COMPLETED

Freyberg Wharf Administration Block (above, right), and E. W. Pidgeon and Company's premises near Newmarket. Architect and Engineer for the wharf block was the Chief Engineer of the Auckland Harbour Board (R. A. J. Sutton). Contract Manager was George Bourke and Foremen were Alec Noble and Pat Sherwood. For Pidgeon's, Kenneth Albert was Architect and Engineer. Contract Manager was George Bourke and Alec Noble was Foreman.



— and in the south



Wellington Police Barracks at Basin Reserve (above) are to be completed at the end of the year. King and Dawson are the architects and Powell, Fenwick and Partners the engineers. Ray Tod is Contract Manager and Cliff Graves has now taken over as Foreman from Dave McLellan.

Clutha Motors' service station, garage and showrooms at Balclutha (below, left). Architects were Salmond and Burt. Foreman was W. T. (Bill) Stevenson.



Factory and offices for Displaycraft (N.Z.) Limited, Wellington (below, right). Architects were Orchiston, Power and Associates. Ray Tod was Contract Manager and Cliff Groves, Foreman.



Fletcher Timber's new drive-in order office at McNab Street, Penrose, is believed to be the first of its kind in New Zealand. Cover for four cars is provided and orders may be placed through a sliding window without clients leaving their vehicles.



SEEN AT THE

FLETCHER HOLDINGS BALL 1962



Peter Coleman (Trust), left, and party



Marlene Strahan (Industries), Kay Cook (Trust) and friends



Barry Bingham (Timber) and friend



Beverly Clark (Holdings) and partner



Graham Leach (Industries) and friend
Below: John Simkins (Industries) and Mrs. Simkins



Jack Lord (Timber) and Mrs. Lord
Below: Roy Clapham (Timber) and Mrs. Clapham



PREPARING FOR THE

antarctic summer



Further buildings for Scott Base are being built at Wellington by Fletcher Construction. These include additions to the huts which were prefabricated by Fletchers in 1959, a stand for the diesel-electric generator machine, an emergency shelter hut to be erected at Cape Royd, and a 48 ft. square vehicle shelter.

The buildings are erected as units in Wellington, dismantled and each section carefully stamped. They will be re-assembled at Scott Base during the Antarctic summer.

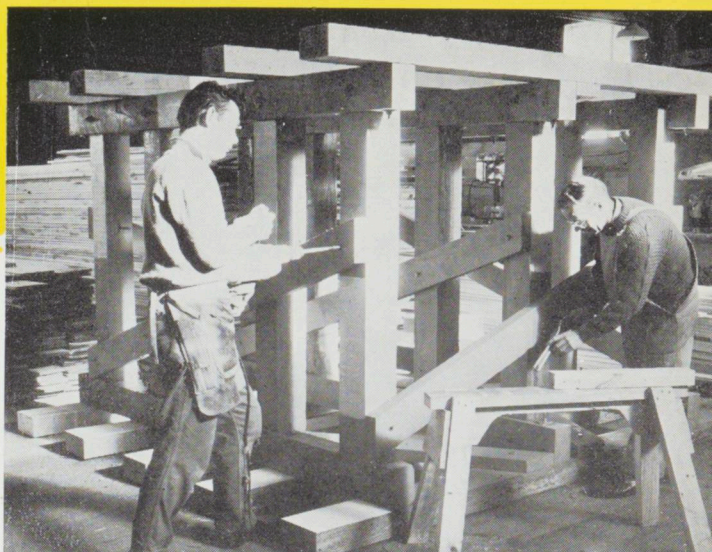
Associated with Fletchers in this assignment are E. A. Saunders and Co. Ltd., of Auckland, who are making the aluminum-sheathed wall panels and A. T. Fellows and Son, Wellington, who are manufacturing the doors.

TOP: Stand for the generator motor. It measures 9 ft. x 6 ft. x 4 ft. 6 in. and is constructed of 6" x 6" Oregon posts with 8" x 4" hardwood joists and bearers. It will be set 4 ft. into the snow and cemented in place by pouring warm water over the snow. This freezes instantly and is stronger and more permanent than concrete.

CENTRE: The timber for the hut to be erected at Cape Royd, 16 miles from Scott Base. It will provide emergency shelter for parties who cannot make it back to the base. Bob Paxton, who is in charge of the job, is seen on the left at the back.

LOWER RIGHT: Stencilling a black Kiwi and reference numbers on a hut. Bob Paxton (with apron) is in the centre of the three men.

BELOW: The buildings at Scott Base in 1959.



FLETCHER

personalia

AUCKLAND

WELCOME: Ellen Stock, Alex Harkin, Norina Fleet (telephonist), Pat Espie, George Roberts, Guy Collins (Industries), Hec. Moran (transferred from Timber), and Elsie Blakey (Holdings), Ken Briggs, Chris Collins, Ted Edwards, Graham Haywood, Graham Levick, Mike Sinclair (Steel).

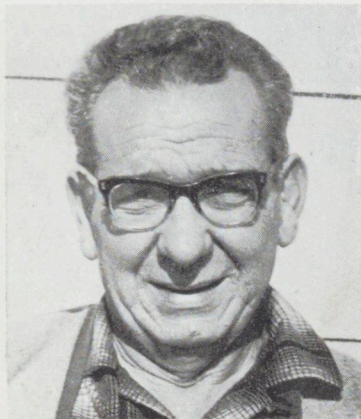
John Turnbull from Sydney has joined us as F.C.C. representative on the Whangarei refinery contract. George Tuffield comes from Wellington as chief contract adjuster and Gordon Welch recently joined the Auckland branch as contract expeditor on the refinery job.

ENGAGED: Janet Montgomerie (Industries) to David Cornish.

MARRIED: Jack Yeo (Steel) to Jennifer Mitchell.

BIRTHS: Sons—Bruce Gollan (Steel), Lila Samu, Seamo Taumoli, Ray Trimble (Industries).

LONG SERVICE



Sam Brett, Fletcher Construction, Auckland, who has qualified for the 20-year-service pin.

OBITUARY

It is with regret that we record the sudden death of P. A. Jamieson at Invercargill on 20 July. He was 53.

"Blue" Jamieson, one of the best known and most popular F.C.C. senior foremen, started his apprenticeship with us in Auckland in 1923 and subsequently worked in many



parts of New Zealand, including Napier, Wellington, Kawerau and the Rangitikei district. He had recently gone to Invercargill to take charge of the contract for the Dalgety - N.Z. Loan & Mercantile Wool Store and his previous job was foreman on the Nelson Cotton Mill building.

The funeral in Wellington was attended by many of his work mates and friends and our sympathies go to his widow and daughters.

SYMPATHY: Our sympathy to Ted Dawson (Industries) on his accident and hopes for an early recovery.

TRAVELLING: Laura Parrott (Sir James Fletcher's secretary) is returning to us in mid-October after a world trip. While in the United Kingdom, she was able to help out in the London office.

FAREWELL: Bernadette Barriball, Pauline Blackman (to Whangarei oil refinery), Ethel Simmonds, Ana Grey, Steve Dunne, Steve Townsley (Industries), Dave Caldwell, Eric Harden, Mrs. Foran (Steel), Jack Greenhalgh, Adrian Kooiman, Tony Dyer (Construction).

RESIGNATION: H. R. ("Bob") Wade, provincial Sales Manager for Fletcher Industries at Palmerston North, has resigned to enter business on his own account. Bob joined the Fletcher sales team in 1949 as Manawatu representative, based on Palmerston North, for the Dominion Sales Corporation which was absorbed by Fletcher Industries in 1954. The good wishes of his colleagues go with Bob in his new venture.

ROTORUA

WELCOME: T. A. Calvert, R. C. Campbell, J. Elliott, P. P. Grant, J. Heather, E. Iri, W. R. McLeod, Collen O'Neill, M. Peters (ex Turangi), A. Rangirangi, A. Stuchbery, R. Thompson (ex Auckland), Kopaki: R. Hukataia, R. M. Kohinga, R. Murray, H. Peni. Turangi: R. Asher, L. Ngapera, T. Poinga.

MARRIED: Raymond Smith (Ngongotaha) to Sherrill Henderson (formerly of Rotorua office).

BIRTHS: Sons—R. Bidois, P. V. Clair, T. Herewini, B. Nicholson, A. E. B. Tapuke, P. Te Paa, M. Wilson. Daughters—N. Iraia, H. Mitchell, G. Morehu, A. A. McLean, T. Te Kuru, H. Timoti.

ON THE SICK LIST: W. B. (Bill) Waller, Timber Supply Officer. The staff at Ngongotaha and branches wish Bill a speedy recovery.

OBITUARY: We regret to announce the sudden death of Allen Burley, Mill Clerk at Ruatahuna. Allen had



been with the company for several years and served at our Kinleith branch prior to going to Ruatahuna. He took a very keen interest in the affairs of the village and will be keenly missed at Ruatahuna.

Another faithful employee, Tamehana ("Tommy") Naera, of Ngongotaha, has died after a long illness. "Tommy" was an authority on Maori art and culture. He was regarded as one of the best carvers in the Arawa District and his work can be seen in many meeting houses.

Our sympathy is extended to both families.

ENGAGEMENTS: Janice Henry (Ngongotaha), to James Bride; Kay Luxford (Ngongotaha), to Colin Attrill.

FLETCHER TIMBER PICKS A WINNER

W. A. Bourke (left), managing-director of Fletcher Timber, congratulates A. M. Robertson and J. C. Sinclair, students of the School of Architecture, Auckland University, who were winners of a moulding design contest for students sponsored by Fletcher Timber, who gave cash prizes. Professor A. C. Light, Dean of the Faculty of Architecture and Arch Lipanovic (Fletcher Timber Sales Promotion Officer) were the judges. Selected designs are being incorporated in the Timber Company's range of mouldings.



WELLINGTON

WELCOME: Brian Marsh (Construction), Jack Clout (Industries), Eileen Romanczuk (Timber), Lloyd Jensen (Trust).

FAREWELL: Pat Cosgrove, Paul Dakin (Construction), Mark Henderson (Hardware), Claudette Millar (Timber), Bent Heiderman (Industries).

BIRTHS: *Son* — Jim George (Hardware). *Daughters* — Eddie Maycock (Timber), Roy Sinclair (Construction).

SOCIAL: Good entries have been received for the Inter-Company Indoor Bowls and Table Tennis Tournaments which start shortly. In the next edition we shall publish the winners of the David Craig Cup (table tennis) and the Ray Berry Shield (bowls).

RETIREMENT: On 14 August a farewell ceremony was held in Wellington to mark the retirement of Cyril Goddard. Cyril was a pioneer of Fletcher Hardware. He joined the Builders' Supply Division of Residential Construction when it was formed in Wellington in 1951. A presentation on behalf of the staff was made by M. H. Rowe. Another presentation was made by Ray Webby, vice-president of the Hutt Valley Master Builders' Association,

SPRING IS WELCOME



No branch will welcome the change of the seasons more than Edgecumbe, which had to contend during the winter with scenes like this when the Rangitaiki River burst its banks. First all hands were on hourly shifts bagging sand and raising the stopbank. Then the Kauri Sawmills Volunteer Fire Brigade had the job of pumping the water away from the houses.

who spoke on behalf of builder clients. Cyril intends to devote a lot of his time to fishing in the Otaki district.

CHRISTCHURCH

BIRTHS: *Sons*—M. Morrison and K. Mullany. *Daughters*—K. Paterson, V. Tzvetkoff and W. Chisholm.

DUNEDIN

SOCIAL: The local Globetrotters are pleasing Dunedin's basketball fans with their amazing successes after last year's regular defeats.

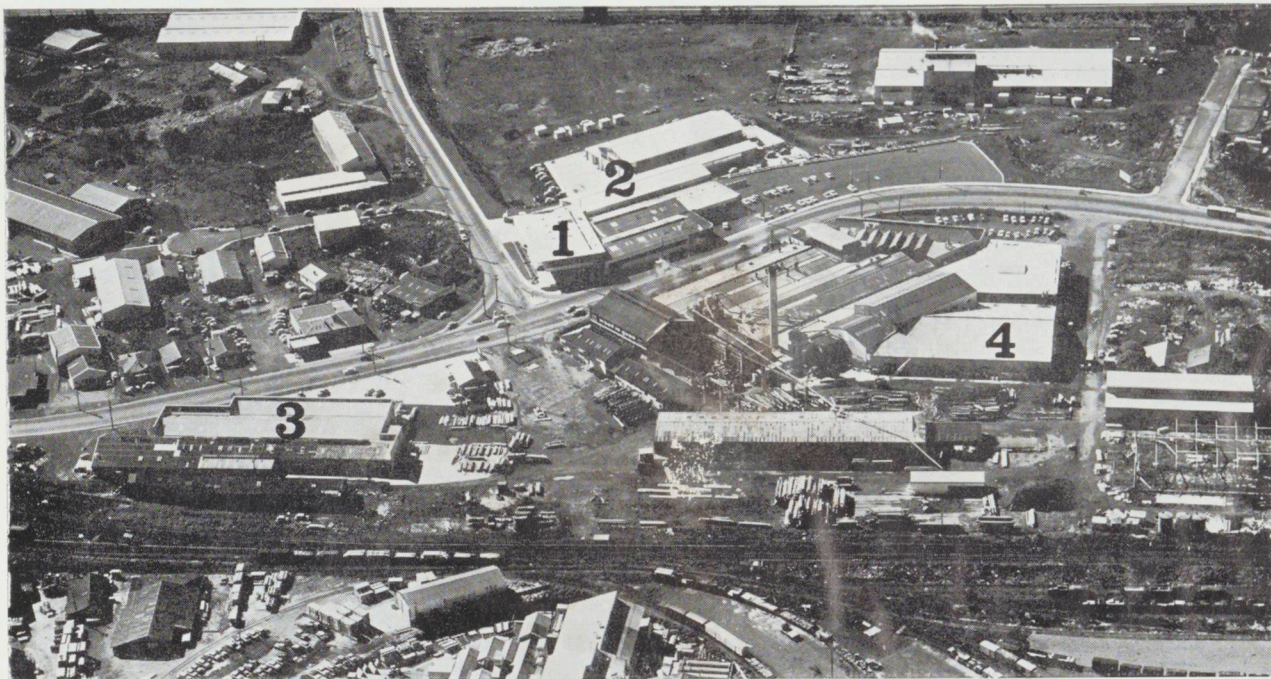
BIRTHS: *Son*—Rex Crayford. *Daughters*—Ian Deans (Timber, Chaslands), Bill Bannister (Steel), Tom Jopson (Hardware).

MARRIAGES: Colin Green (Timber), to May Medex; Dave McLaren (Timber), to Lynn Maxine.

CONGRATULATIONS: Vic Sturgeon for passing Trade Certificate examination and completion of Apprenticeship; Colin Stevens, completion of Apprenticeship (Timber).

WELCOME: Des Barry (Timber, Chaslands), Ray Sullivan (Timber, Dunedin).

PENROSE FROM THE AIR TO-DAY



This recent Whites Aviation photograph gives a comprehensive view of the Fletcher buildings at Penrose. For those who are not familiar with the area, the Great South Road curls across the photograph from left to right. In the centre of the photograph Penrose Road is seen running up from Great South Road. On the corner of these two roads are the offices of Fletcher Construction (1), Trust and Hardware (next to carpark). Immediately behind them is the plant hire and maintenance building (2). Across the road and slightly left is the Lumbermart (3). Across the yard from the Lumbermart is the plywood factory (4) with peeler logs in the foreground and the Plyco chimney standing out prominently. The main offices are in this block fronting Great South Road. Far right of the photograph is the Brownbuilt factory and between it and the railway can be seen the framework of the new quarters for the Duroid factory shortly to be moved from Onehunga.



A LOVELY FLOOR

TO LAST FOREVER

IN THE HEAVIEST TRAFFIC AREAS OF YOUR HOUSE



PLYCOPYNE FLOOR TILES

Plycopyne flooring has been selected for its hardwearing qualities in factories and offices. Now in perfect-fitting floor tiles, its natural loveliness is an ideal choice for your home, especially in areas where traffic is heaviest — entrance hall, kitchen, dining area. It can be left a natural blonde or stained to darker shades. Made of selected wood flakes bonded under pressure, Plycopyne will not warp or crack; is impregnated to give excellent resistance to borer. You will be pleased with its appearance—impressed with its outstanding wearing qualities, delighted with its low cost. For your floors, discuss with your architect, builder or floor layer the advantages of Plycopyne floor tiles.

FLETCHER
industries



Additional information will happily be given by the manufacturers:

Private Bag, Auckland	Ph. 596-099	Private Bag, Rotorua	Ph. 2470
P.O. Box 2052, Wellington	Ph. 47-243	P.O. Box 468, Napier	Ph. 37-977
P.O. Box 1168, Christchurch	Ph. 47-059	P.O. Box 307, Palmerston N.	Ph. 4690
P.O. Box 393, Dunedin	Ph. 75-910		



AK 5571