

FLETCHER
arrowhead

Christmas 1959



J. C. Fletcher, Managing Director,
Fletcher Holdings Limited.

FLETCHER

Arrowhead

Published by Fletcher
Holdings Limited, Great
South Road, Penrose,
Auckland, New Zealand.

CHRISTMAS

Number

THIS year was a milestone in the history of our organisation as it marked the 50th year in business in New Zealand for Sir James Fletcher, who founded the Company.

Sir James' career has been characterised by a greater than normal spirit of enterprise and enthusiasm, and we have tried to make this same spirit the keynote of the Company—sometimes we have succeeded and sometimes failed. However, we can look back at solid examples of achievement in the form of many fine buildings constructed, in worthwhile industries established and in new methods, equipment, products and services pioneered in New Zealand by Fletchers.

But these are now largely in the past, and it is with the present and the future that we are concerned.

I believe that New Zealand is on the verge of a great industrial upsurge, and recent developments in industries with which we are closely identified give point and substance to that belief.

The first stages of establishment of a New Zealand pulp, paper and sawmilling industry based on exotic timbers have been successfully accomplished. All operators in this field have plans for expansion and it may well be that the best is yet to come.

Nineteen Fifty Nine has seen worthwhile progress towards the establishment of an iron and steel industry in which we hope to play a useful part.

These are but two major industries in which substantial growth can be forecast, but, as I write, our own Company has many more new ventures under investigation. While it is not to be expected that other than a small proportion will finally proceed, it is indicative of the interest and importance we are placing on industrial development for the future.

To you all as fellow employees in the Fletcher organisation, I would like to record my personal appreciation of the part you have played during 1959 in keeping the Company's name and service to the fore in the fields in which we are engaged. It has not been an easy year, and you will all be looking forward, no doubt, to the Christmas break.

I hope we have a good summer and that in whatever form your holiday may take it will in all respects be as you would wish it.

The best of goodwill for Christmas and the New Year to you all.

Jim Fletcher

14th December, 1959.

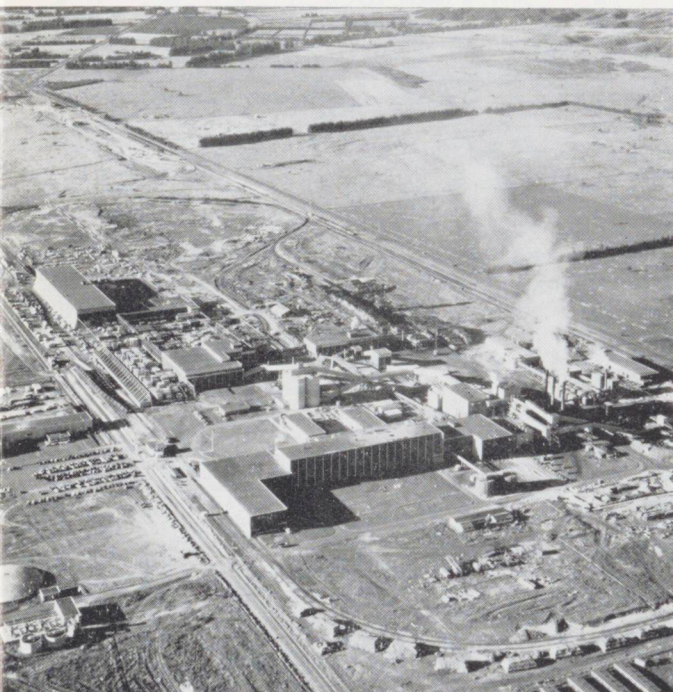
1959 and the road ahead

By the time this issue of "Arrowhead" is published, 1959 will almost be over. For most businesses it has been a tough year, with conditions both uncertain and keenly competitive. Nevertheless, we at Fletchers can record much progress, and many events and decisions of 1959 have helped to clear the road ahead for 1960 and the years to come.

One of the most important events of 1959 was the introduction of Bowaters into the Tasman Pulp & Paper Company Limited, and this and other events of significance are summarised below and in the pages that follow.

PAPER AND PULP

a second machine for Tasman



View of Tasman's plant at Kawerau

The introduction of the Bowater Organisation as a full partner in Tasman Pulp & Paper Company Limited is one of the major landmarks of 1959.

Bowaters are world-known in the pulp and paper field, particularly in newsprint, and, in co-operation with Reeds, it will now be their responsibility to provide the management and the selling organisation for Tasman. Bowaters will pool their existing newsprint contracts in the Pacific areas, thus giving Tasman an assurance of sufficient orders to install a second newsprint machine. This could mean an additional £5,500,000 of export trade to Australia.

The manufacture of newsprint on modern fast-running machines involves advanced techniques and the experience of Bowaters is unexcelled. Very shortly they will be sending to New Zealand a group of technicians, and among their responsibilities will be the training of staff in preparation for the installation and running of the second machine, with the eventual objective of building up a complete New Zealand trained staff.

Fletchers sponsored and played a major role in the Tasman development. Their £1,000,000 investment demonstrated their faith in the industry.

The introduction of Bowaters (in which Sir James and J. C. Fletcher played no small part) has consolidated that investment and will work for the advantage of all shareholders as well as for New Zealand.



IRON AND STEEL



production to begin . . . 1961

Rome wasn't built in a day, and although nearly a year has passed since Government approval was granted our plans to establish a merchant-bar mill, the time has not been wasted and much necessary preliminary work has been completed.

Fletchers sponsored and launched Pacific Steel Limited in association with Industrial Metals Limited of Wellington. Two famous old-established British Companies are our partners in this new venture—Colvilles Limited and Stewarts and Lloyds Limited. Guest Keen & Nettlefolds Limited will also be participating. A Provisional Board has been appointed, with J. C. Fletcher as Chairman.

Pacific has the franchise from the Government to establish and operate a merchant-bar mill, and this will be erected at Favona Road, Otahuhu, Auckland.

Initially, the raw material for the plant will be local scrap steel, and the capacity of the mill, on a one-shift basis, will be 50,000 tons, covering a range of merchant-bar products—reinforcing rounds, flats, light-angles, etc. Production would be increased substantially if billets were available from overseas at competitive prices.

Over the past 12 months, considerable progress has been made in the plans for developing a local basic-steel industry using ironsands. With the new direct-reduction processes now coming out of their teething stages, a feeling of optimism exists, and although it is too early to make firm projections, it is generally felt that the use of New Zealand's vast resources of ironsands is much nearer than was ever imagined.

Recently the Government has been preparing the way legislatively for a £250,000 investigating company to be responsible for thoroughly measuring the volume and quality of available ironsand and coal resources and to carry out the testing of possible processes.

This investigating company will be entirely separate from Pacific Steel (in which the Government is not a shareholder), but Pacific and others hope to be active participants.

The iron and steel industry in New Zealand has till now been dogged by failures and disappointments, but it can be confidently said today that a fresh and promising start has been made, and, in 1961, New Zealand-made steel will be on the market.

INDUSTRIAL LEASEHOLDS

a new venture for N.Z. ... and Fletchers

Many thriving businesses in this country are strapped for room to expand. New highways, new by-laws and expanding prospects are forcing them to leave the crowded city centres for areas where they can breathe and grow.

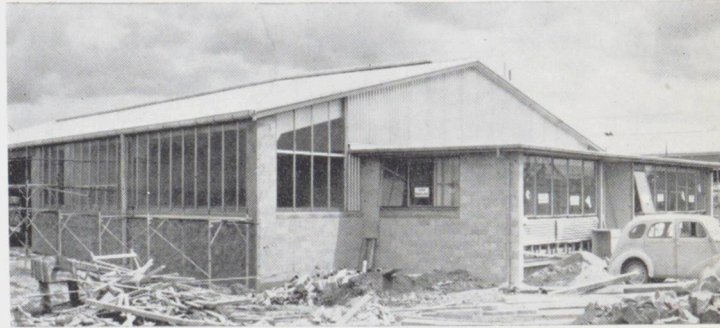
But land is expensive and capital priorities are primarily for better plant and more working funds.

Faced with current land prices, some companies are forced into low quality and unsuitable construction and often end up with as many problems as they had before they moved.

Adopting a principle well established overseas, Fletchers' Leasehold and Development Plan offers new premises for lease, thus permitting companies and organisations taking advantage of the scheme to conserve capital . . . to avoid locking up their funds in land and buildings.

The scheme, launched late in September, met with immediate success. Nearly one hundred enquiries, mostly from substantial organisations, came in the mail on the day after the advertisement appeared, and negotiations are currently being conducted with numerous companies.

Fletchers' Civil Engineering Division is busy on the Southdown Site, and the first new leasehold factory at Penrose, for Bakels New Zealand Limited, should be completed shortly.

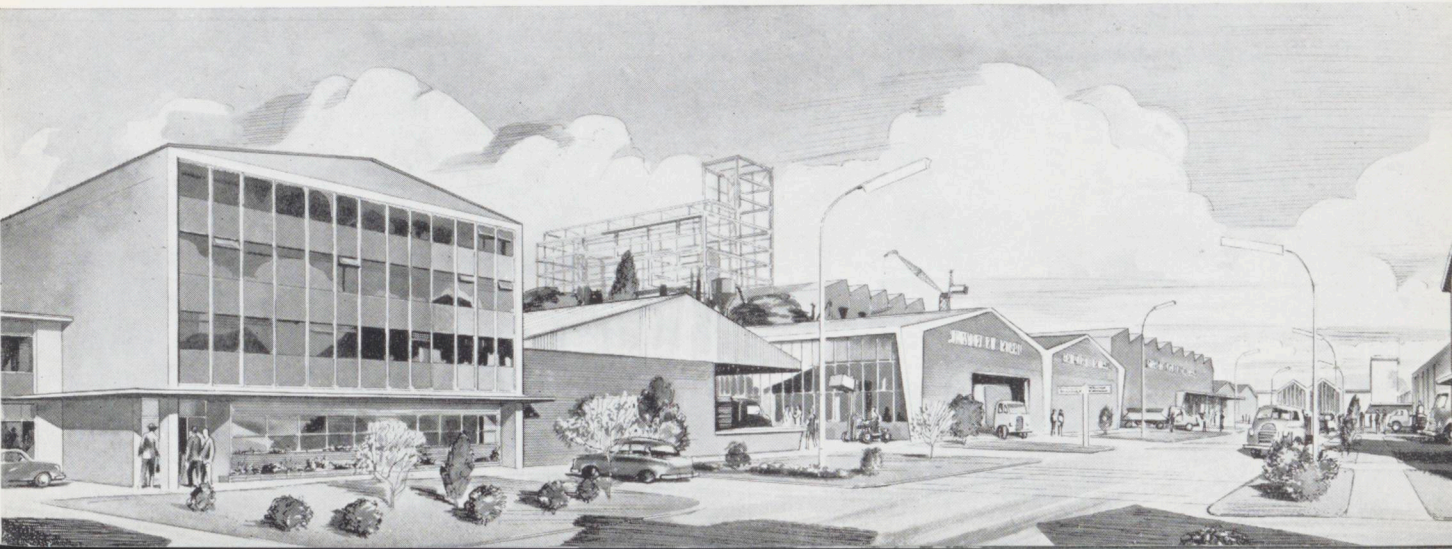


The first leasehold factory on our Southdown Estate, for New Zealand Bakels Limited, nearing completion.

The Motorway Site (still known as "The Kauri Yard") is ready for building on, as is the site at Hornby in Christchurch.

Wellington presented some problems as far as available land was concerned, but satisfactory arrangements have now been made with the Wellington City Council to acquire sites in the new industrial area at Rongotai, adjacent to the new airport.

The response has amply confirmed that the need and the demand is there, and we are convinced that the scheme will make a real contribution to the expansion of industry in this country.



HOUSING

... and land development

Fletchers are currently developing land in Auckland to make available nearly four hundred sections within the next 12 months. Contracts for the erection of houses will be negotiated with individual builders.

Three years ago in Auckland the number of State-house units in any one contract fell so low that we reluctantly bowed out of housing. When that day came we adjusted our timber and hardware organisations to service the Group Builders and today we are among the largest suppliers in the field.

Up till recently the small builder could secure serviced sections on reasonable terms, but today the position is growing acute and many of them are spending more and more of their otherwise productive time in searching for land, negotiating with owners and frustratingly awaiting payments from finance organisations.

Land subdivision and the engineering work that goes with it is costly, and owners for their part are happier to see this work handled by one large organisation rather than a host of individuals.

Consequently, and simultaneously with the launching of

our Industrial Leasehold Plan, we launched our land development programme.

Here are brief details of the scheme:—

- Fletchers buy the land, prepare the subdivision plan and carry out all the necessary engineering, drainage, roading and sewage work.
- Serviced sections are made available to individual firms of builders to build to designs and specifications provided by Fletchers.
- When the houses are completed, the responsibility for selling them falls on The Fletcher Trust & Investment Company Limited.

The advantages to the builder are obvious:

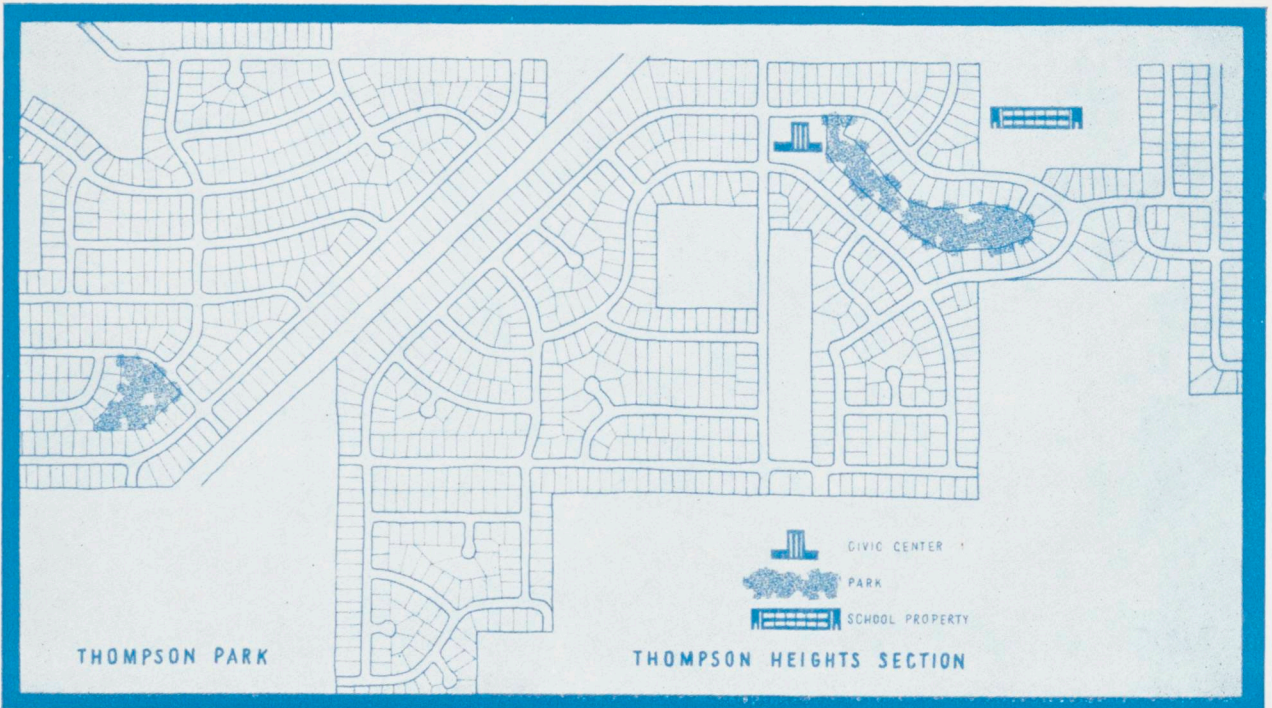
He is allocated serviced sections without the necessity of financing them himself.

He gets paid regularly as the job progresses.

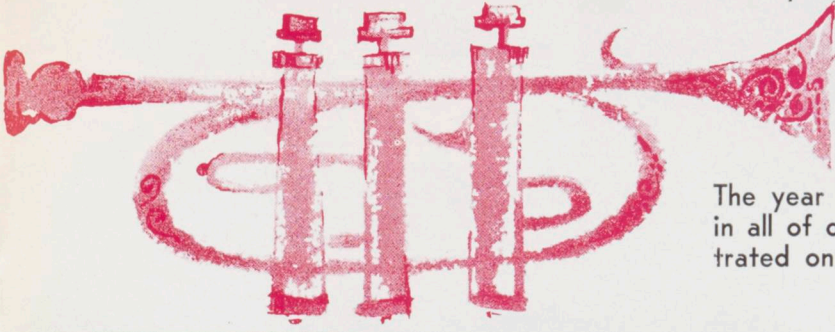
He does not have to worry about the selling of the finished homes or arranging finance.

Rapid progress is expected and many benefits will accrue to participating builders.

Typical modern conception of a residential land subdivision, similar to those the Company is undertaking at Pakuranga, Auckland.



Our own trumpet . . .



What we've done in '59

The year 1959 has seen many new developments in all of our Companies. Some of these are illustrated on this page and the pages which follow.



FLETCHER Hardware

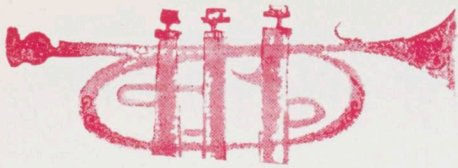
Above and below are exterior and interior shots of our new showroom and store in Riccarton Road, Christchurch. Modern and functional in design, it has already attracted considerable attention in the Cathedral City. During the year the new store was also completed at Penrose.



FLETCHER Steel

The biggest proportion of the steel we use each year is rarely visible to the naked eye. In the picture below, Fletcher Steel (with the help of Fletcher Construction's cranes) engineer a 100-foot lift to place a pre-fabricated steel truss on top of the Farmers Building in Auckland.





Our own trumpet . . . continued

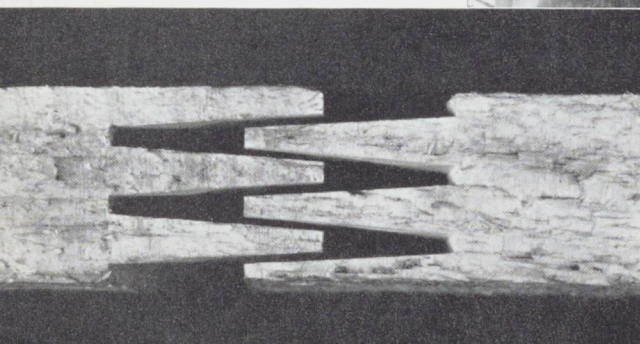
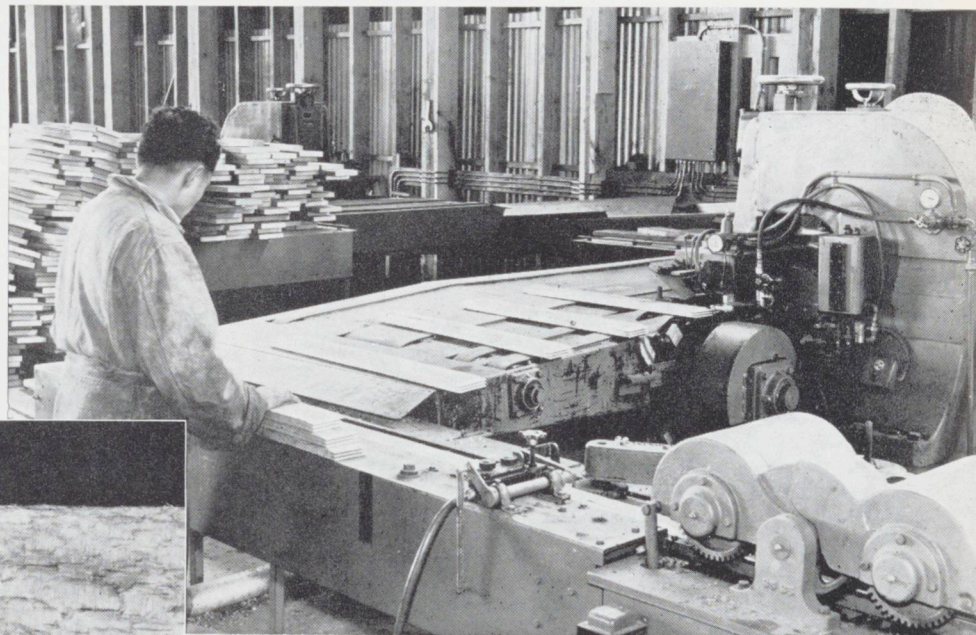


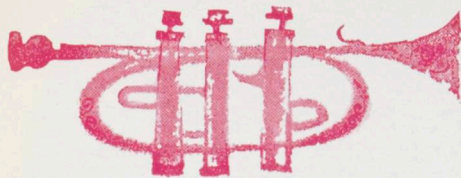
Above: As our integrated timber processing plant at Ngongotaha grows bigger and better, the Auckland yards are steadily emptying. The old 'Kauri Yard' (as it is still sentimentally called) used to be stacked sky high. Now it will form part of our Industrial Estate Plan. The land on the hill in front of the trees which surround Scotswood will shortly be opened up for housing and thus another Penrose landmark will disappear.

FLETCHER

timber

Right: In step with the times, Fletcher Timber has installed a modern finger-jointing machine at Ngongotaha. This enables us to upgrade output by using short lengths which have had their defects docked out. Inset shows the actual form of the joint. Machine was purchased from Texas, U.S.A.





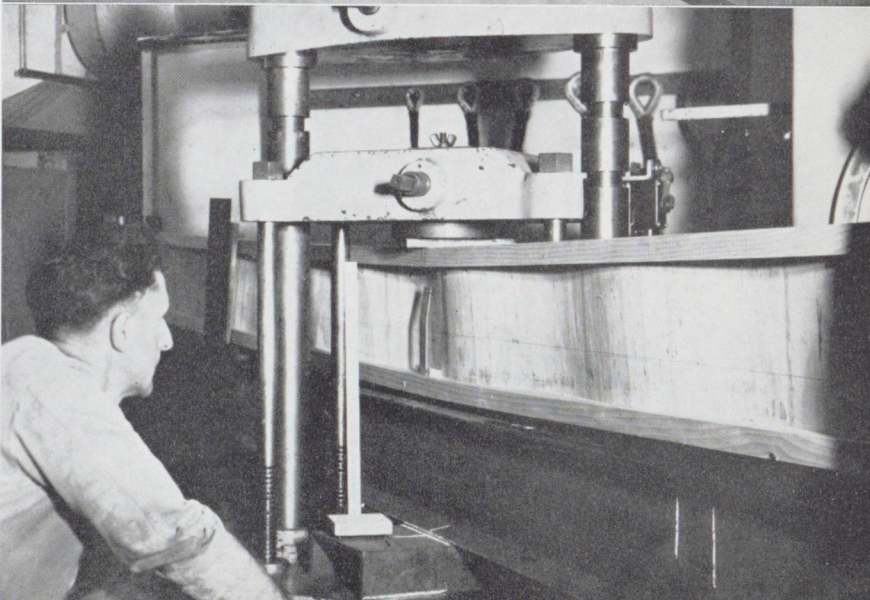
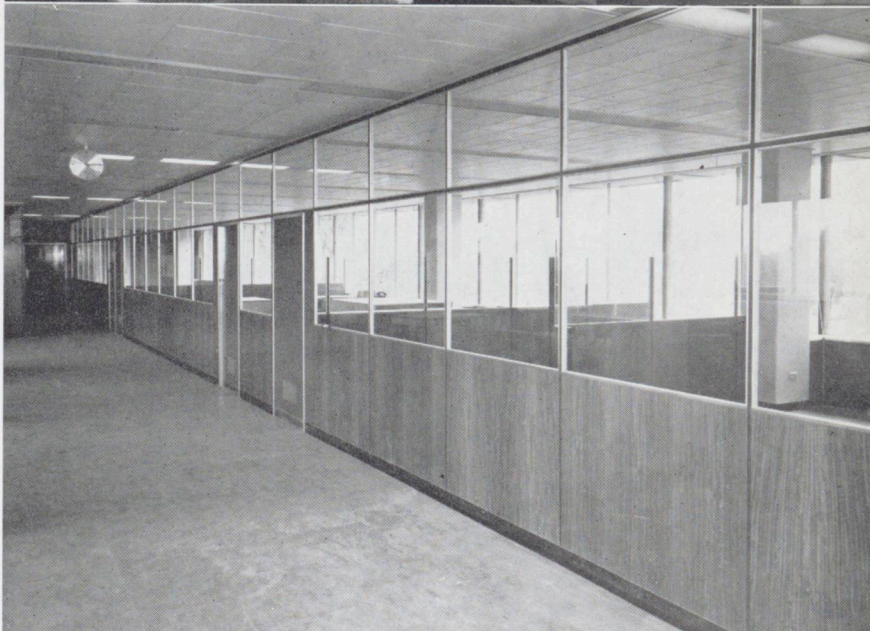
Top: Interior of the new door factory at Penrose which started operations in May of this year. The new Honeycomb and Mirror - Finish doors are manufactured here.

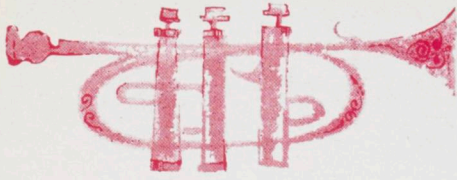
FLETCHER

Industries

Centre: A new company in which Fletcher Industries will have a substantial interest will shortly be making these types of interior partitions in Auckland. Constructed of Particle Board and high - class veneers, they are light, rigid and easily erected. Known in Australia as 'Brooks Partitions', they have been used widely there in many of the latest office buildings such as 'I.C.I.', Melbourne.

Bottom: This is an experimental all-wood beam of German design developed here in New Zealand by our Timber and Industries Companies in association with our Engineering and Design Office. Picture shows it under $1\frac{1}{2}$ tons loading at the Auckland Industrial Development Laboratory. It could be an alternative for imported structural timbers. It consists of two Radiata flanges joined by a corrugated plywood web which resists buckling and shearing and aids torsional strength.

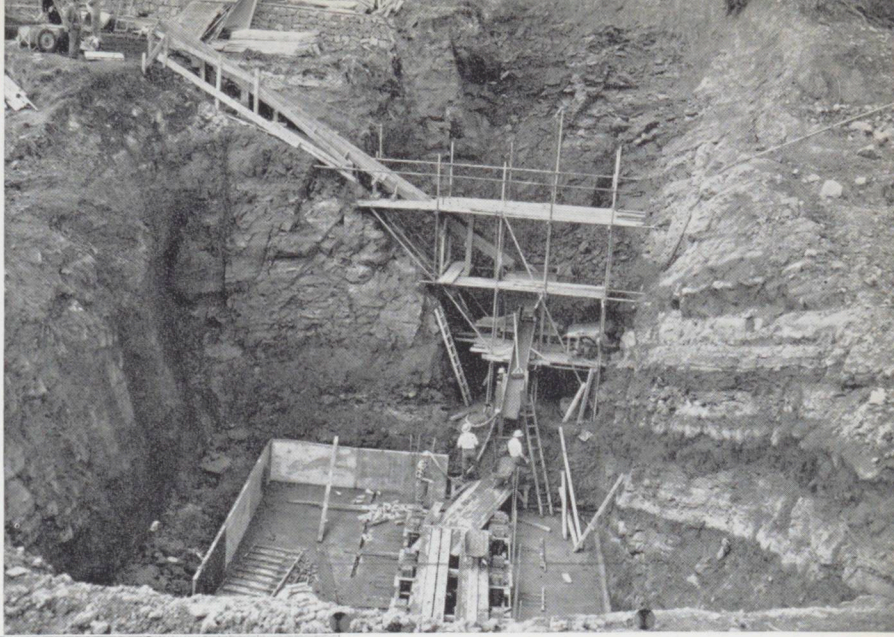




FLETCHER

construction

Still going strong, building . . .



PUMPING STATIONS

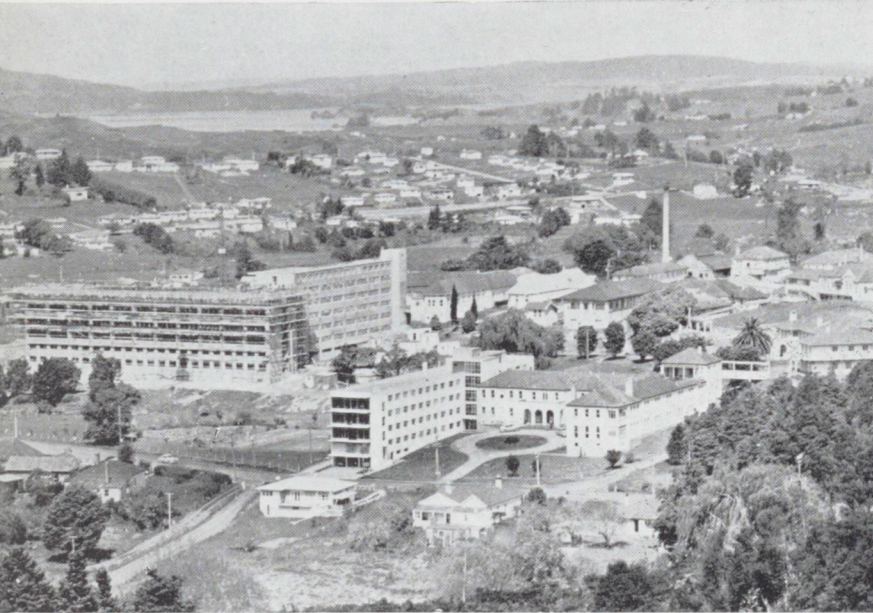
This 'big hole', 50 foot deep and over 50 foot wide, within inches of the tide at Hillsboro', Auckland, is one of the four pumping stations being built by Fletcher Construction for the Auckland Metropolitan Drainage Board. Foreman, Ted Dudson, Supervisor, Bill Anderson.

HOSPITALS

There is hardly a time when Fletchers are not building something to do with a hospital. On the left is the Whangarei Base Hospital, showing the contract well on the way to completion.

ANTARCTIC HUTS

We can't claim to have been building Polar huts for years, but these at Scott Base were largely prefabricated by Fletchers in New Zealand, for the expedition.

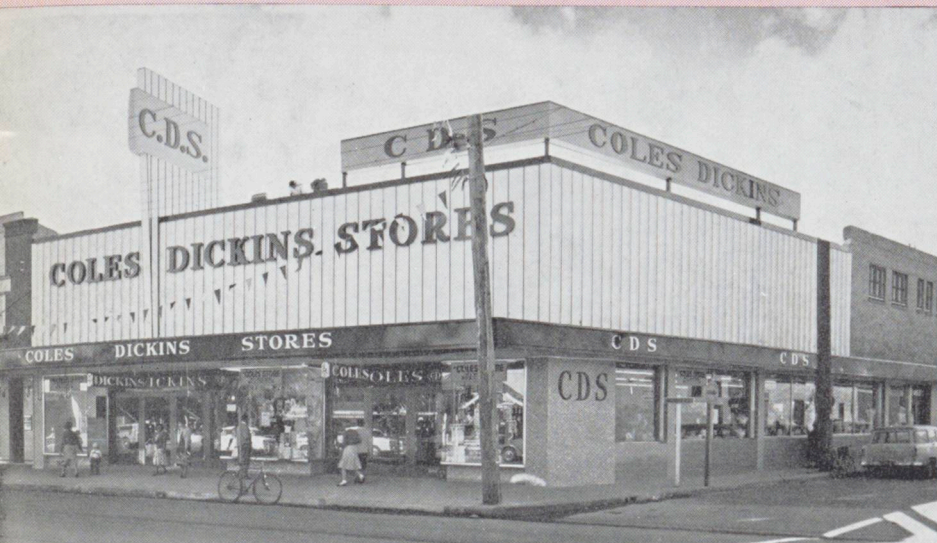


RUSH JOBS

Below: Fletchers' 24-truck convoy just prior to starting on two-day journey into Fiordland. The Company was awarded the 'rush' contract to rebuild the dining and kitchen blocks of the Milford Hotel recently razed to the ground. Job has to be finished before Christmas and work is right up to schedule. First convoy load included 150 tons of timber and steel and 7000 gallons of petrol. Operation was successfully accomplished through avalanche country. O.C., Norm Thackray.



Australiana



Meanwhile our Australian
Cobbers have not been
loafing . . .

Front view of Selling Store
at Penrith for COLES
DICKINS STORES.

Architects: Downie, Soder-
sten & Associates.

Supervisor: E. H. Bates.

Foreman: Jim Eamens.

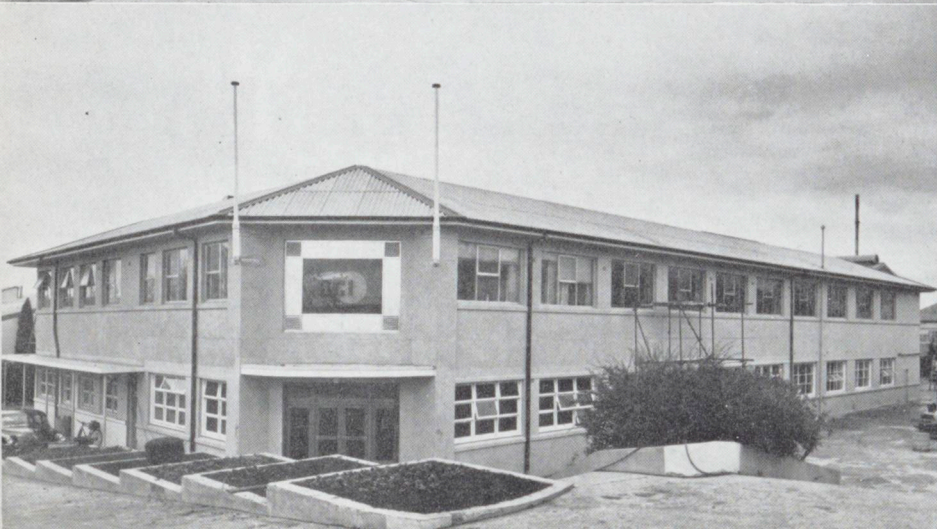


Printing Works and Office
block for WILLIAM A.
COONEY PTY. LIMITED,
Parramatta Road, Fleming-
ton.

Architects: Frederick & Lee.

Supervisor: J. L. Trotter.

Foreman: Phil. Organ.



Reichhold Chemicals Inc.
(Aust.) Pty. Limited, at
Stephens Road, Botany,
Main Office Block after an
additional floor has been
added.

Architect: Leighton & Irwin.

Supervisor: E. H. Bates.

Foreman: Benny Owens.



Selling Store for G. J. Coles & Co. Limited at George Street, Sydney.

Architects: E. A. Norris of Melbourne in conjunction with Downie, Sodersten & Associates.

Supervisor: E. H. Bates.

Foreman: Bill Baxter.

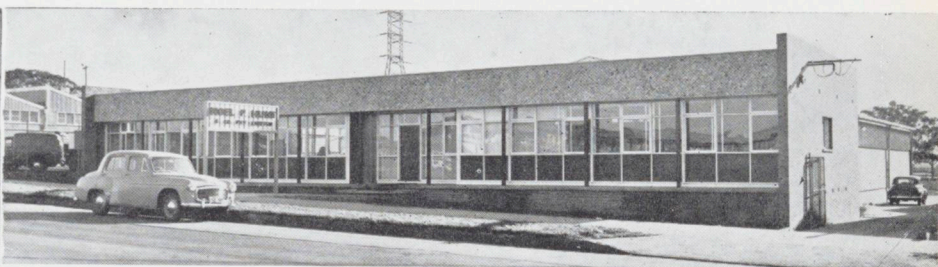
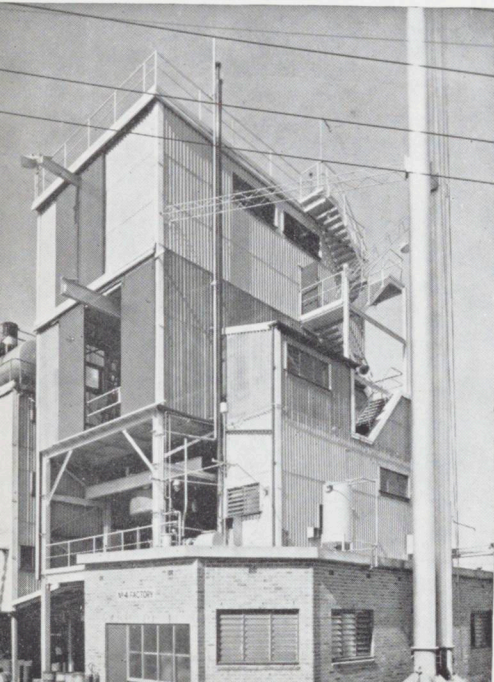
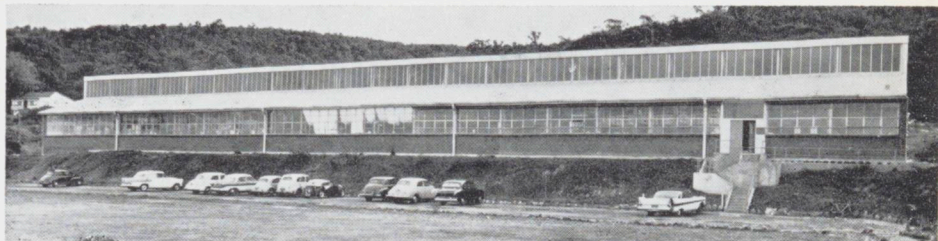


FOTEK CORPORATION PTY. LIMITED, a Subsidiary of Hanimex Corp. Factory and Office at Brookvale.

Architects: Stafford, Moor & Farrington.

Supervisor: A. H. Whittleston.

Foreman: Digby Kitching.



POLYMER CORPORATION PTY. LIMITED. New Chemical Plant at their existing factory, Mandemar Avenue, Homebush.

Designed by: Stanley & Llewellyn.

Supervisor: J. R. Turnbull.

Foreman: Digby Kitching.

Office Block and Factory at rear for NOEL P. HUNT & CO. PTY. LIMITED, Parramatta Road, Flemington.

Architects: Louis S. Robertson & Son.

Supervisor: J. L. Trotter.

Foreman: Bill Foote.



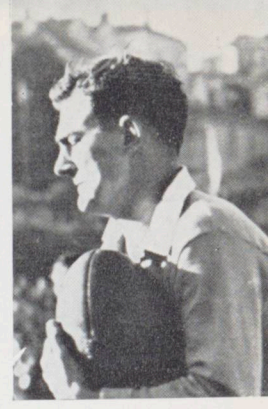
Frank McMullen



Terry Lineen



Colin Currie



Tom Jopson

LION TAMERS



Fletchers have always been well represented in sport, particularly Rugby. This year against the British Lions we can claim one All Black—R. F. (Frank) McMullen, who played in the first three Tests, but was injured for the last one. Frank served his time with the Company as an apprentice-carpenter and is now on the selling side of the Timber Company in Auckland.

Tom Jopson of Fletcher Hardware, Dunedin, is carrying on the tradition of our Davie Trevathan by representing Otago throughout the season, in-

cluding their victory against the Lions.

Colin Currie, son of our George Currie, one of Fletcher Construction's senior foremen in Wellington, also represented his province against Ron Dawson's fifteen.

Our connection with Terry Lineen (All Black—four Tests) is also a family tie. He is the nephew of Jack Lineen of Fletcher Timber, Auckland, but Jack is as proud of Terry as if he was his father.

Good luck to them all for the tour of South Africa in 1960.

OUR PRINTERS

It is a pleasure to reproduce a photograph of the new factory of E. S. & A. Robinson (N.Z.) Limited, which was both designed and built by Fletchers. Although the name may not be familiar to everyone, it should be explained that Messrs. Abel Dykes Ltd. became a subsidiary company of Robinsons of Bristol and have changed their name to E. S. & A. Robinson (N.Z.) Ltd.

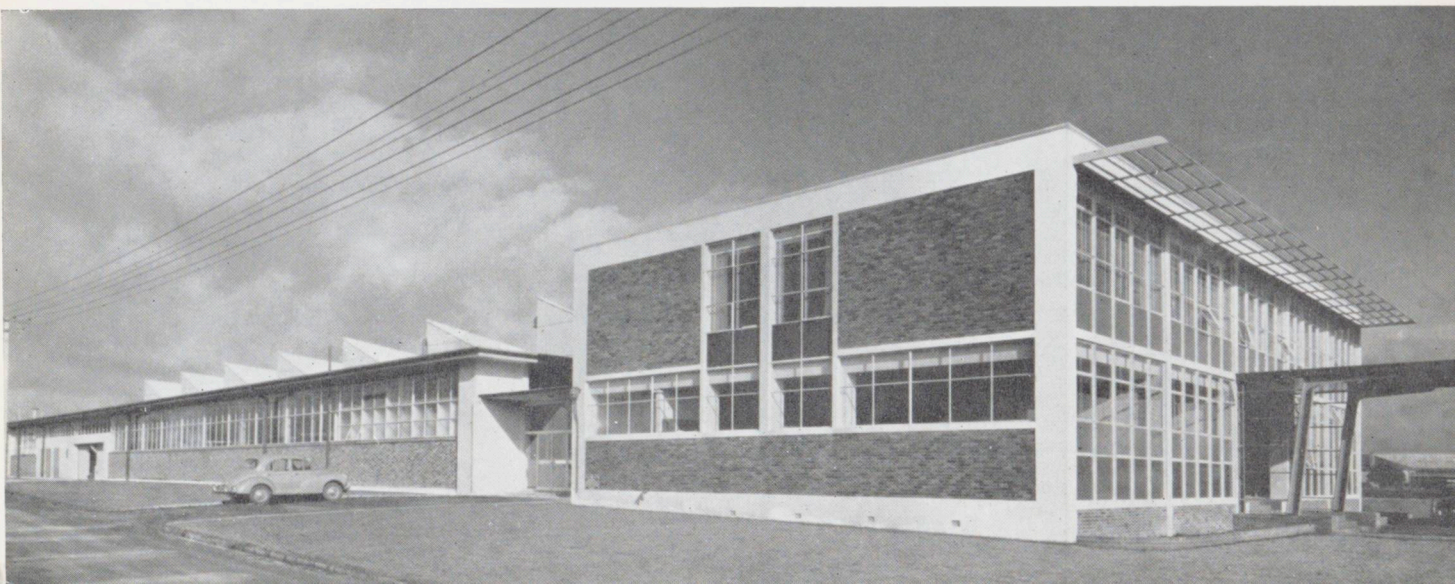
... OLD FRIENDS

To Mr. W. C. Rotherham who bows out (and who has been closely connected with the job) and to Mr. John Prigg who has taken over the management, we extend our very best wishes. To Ross Lee, Charles Peck; Jim Watson and Doug. Prince, and all those others who put together our Annual Reports, *Arrowheads*, and rush jobs, we hope you will be happy in your new premises. We look forward to many more years of friendly co-operation together.

NEW FRIENDS

The building was designed by our Engineering and Design Office in association with Mr. John Collins of Bristol.

General Foreman was Charlie Clews; Finishing Foreman, Ken Klein; Supervisor, Bill Anderson; Office Control, Tony Dyer.



Personalia

AUCKLAND

WELCOME: Jilian Wilkes, Gladys Clements, Margaret Fox, Bill Ansted (F.C.C.); Freida George, Sandra McNaughton, David Worsnop (Hardware); Del Purdie, Judy Tyler, Gerry Brett, Dave Caldwell, John Zwart (Steel); Frank Downs, Fay Goodwin (Timber); Judy Sturges, Trevor Hunt, Frank Calkin, Jim Drummond (Industries); John Humphries (Holdings).

TRANSFERS: Glenis Montgomerie (to F.C.C.), Jack Swift (to Steel) Tom Solomon, Jim Morrison (to Industries), Peter Battersby (to Holdings).

WELCOME HOME: Sir James and Lady Fletcher, from overseas; Bob Van Meeuwen, from a visit to Holland; Stan Thompson and Ike Uhlson, from hospital (Industries).

FAREWELL: Joan Gulberti (Industries); Joan Pulman (Hardware); Len Annan, Ray Wilson, Roy Walden, Percy Ailes, John Hennephof, Phyllis Tollafield (Steel); Val Kinnon, Ann Harper, Betty Nowak, Pat Wright, Gerry Holder, Jim Meikle (F.C.C.); Bruce Austen, Frank McAuley, Bill Hughes, Arthur Lock, Tom Heath, Alan Peat, Jessie McGrath (Timber); Mick Chappell (Industries).

BIRTHS: *Sons:* Lester Salisbury, Lila Samu (Industries); R. C. Williams, F. G. H. Gilbert (F.C.C.); Frank Plume (Steel). *Daughters:* Seanoa Taumoki (Industries); P. Cassidy, C. Hepi, D. R. McLeod, W. Rerekura (F.C.C.).

ENGAGED: Diana Temple (Hardware) to John Haggart.

WED: Ian Souster (Steel), John Dent (Industries).

SOCIAL: Plywood welcomed Bob Wall and a party from Christchurch at a smoko after the Fourth Test. In a seven-a-side match the next day the Southerners romped home 23-3.

At Steel, the Office played the Works (and gave it to them) at Rugby League, 12-7.

The fishermen of Duroid are sharpening their hooks. Charlie Davies' *Koraka* is all ready for the scallop season.

APPRENTICES: Stephen Briggs (F.C.C.) topped New Zealand in the second qualifying exam, and David Subritsky topped Auckland in the first round. Congratulations.

OBITUARY

With great regret we record the sudden death of Tom Snelling, our early morning operator at Penrose. Tom was a good friend and loyal servant.

ROTORUA and NGONGOTAHA

WELCOME: Len Clark, Area Accountant (transferred from Christchurch), John Quinlan (Kinleith), Maurice Peters (Turangi), Eric Johnston (Ngongotaha).

WELCOME BACK: Alan Burley, Jim Donaldson.

FAREWELL: Tony Littlejohn, Russ Smith, Alf Borley and John de Carteret.

SICK LIST: Lou Hahn, Oscar Parkinson, Laurie Donaldson and Alf Griffiths are back on deck. Bill Blenkinsop is improving. Les Crawford, Lou Morrow and Spiker Bos are all making good progress.

TRANSFERS: Peter Heta goes from Te Rimu to Ruatahuna and Geoff Transom from Kinleith to Te Rimu and Hautu.

BIRTHS: *Sons:* to Bill Scott, Alister Brown and Les Atkinson. *Daughters:* to Dick Bidois, Roger Hulton (Snr.) and Roger Hulton (Jnr.) A baker's dozen to Roger (Senior). *More daughters:* to Des Crawford, Jim Houghen, Gordon Close and Bruce Nicholson.

CONGRATULATIONS: Colin Stockwell on his marriage.

TRIPPERS: Arthur Jewell back bronzed after Koro Levu holiday. Bill Reid, late of Rangitaiki, back on furlough from Philippines.

BABY BONUS

The Superannuation Fund paid out 143 Maternity Benefits for the year ending June 30, 1959.



Anvil Chorus 'Girls' at Auckland's Ball. Back: Jack Yeo, Ray Kingston, Miss McNaughton, Doug Notley. In Front: Ian McLachlan, Len Annan, Ian Souster. (F.S.E.)

CHRISTCHURCH

WELCOME: To Dorothy Brine, Robert Bushby, Lindsay Woods, Alan Jeffs (Hardware), Valerie Lymburn, Frank Cranfield, Jim Molloy and Ted Garrick (Industries). Beverley Brown, John Noteboom and Dick Wright (Steel).

FAREWELL: To Wilf Ball, Paul Davies, I. Kelly and to Len Clark who has transferred to Ngongotaha.

CONGRATULATIONS: To Mervia Dennison, Dawn Buist and Eileen Flanagan—engaged; and best wishes to Ken Illes—married.

STORKS: *Sons;* to Ted Prebble, Ian Morris, Les Nolan, Dick Hutson. *Daughters;* G. Ann-gow (twins), J. Grant, W. Frost, R. Clark, R. Nuttall, C. Ross.

SYMPATHY: We would like to extend our deepest sympathy to Highie Hillgrove who lost his wife; and to the family of Bill Evans of F.C.C. who lost his life as the result of an accident.

DUNEDIN

WELCOME: Kevin Harrison and Peter Meason (Timber); Jim Airey (Industries); Don Jowett and Harry Tolley (Hardware); Ernie Bolla and George Cameron (Steel).

FAREWELL: Peter Chettleburgh (Timber); Mary McAuley and Beryl Languish (F.C.C.); Graeme Pierson (Industries); George Newman, Gordon Lindsay and Dave Kennedy (Hardware).

TRANSFERS: Carl Ryan to Auckland to be Acting Managing Director, Fletcher Steel. Ron Clark, from F.C.C. to Timber.

ENGAGED: Esla Robertson (Industries) to Pat Lowe.

BIRTHS: *Sons:* Ron and Hazel Clark, Alex Coleman, Keith Fay, Tom Jopson, Charles Thomas, Noel Barkman, A. Moore. *Daughters;* Kevin and Pam Harrison, Allan Gillions, J. L. Hughes, and H. Fearn.

RETIRED: O. V. "Jerry" Wright (Steel), after 31 years' service on many jobs including Civic Chambers, Wellington, Dominion Fertilizer, Medical School, Cadbury Fry (Dunedin). (See photo)



WELLINGTON

WELCOME: Laura White (F.C.C.); Doug Drinkwater (Hardware—2nd time round).

FAREWELL: Margaret Allen (Industries); Ron Brierley (Hardware).

TRANSFERS: Donald Lister, from Timber to Steel.

CONGRATULATIONS: Rosemary Lund, engaged to Mac Martyn; Donald Grigg, on his recent marriage.

"MISS WELLINGTON AIRPORT": Fletchers were represented by two pretty entrants—Margaret Hore (Hardware) and Rosemary Lund (F.C.C.). See photo. Rosemary was among the 20 finalists.

SOCIAL CLUB: Reports plenty of activity and two major events; Fourth of July Party with Pauline Anderson the complete cigarette girl in snappy satin.

October 10, Grand Anniversary Party to celebrate Sir James' 50th year of business in New Zealand. Fifty years of photographs, anniversary cake, speeches by Mel Rowe and J. J. Craig, and all the trimmings. (See photos)



Rosemary Lund (left) and Margaret Hore — Wellington's "Miss Rongotai" entrants.

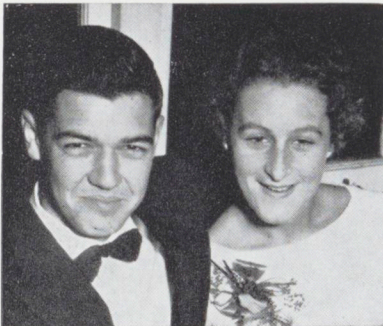
SYDNEY

BIRTHS: To Clive Collier, a daughter.

CONGRATULATIONS: To Adella Roberts on her engagement. To Warren Smith, married in September.

FAREWELL: To Joan Holmes, moved to Leeton, N.S.W.

SYMPATHY: To the family of the late George Dorward who for the past three years was employed as a Woodworking Machinist.



At Auckland's Ball: Noeline Philpott and Bob Wallace.



Barry Fort and Sandra McNaughton at 'Sorrento'.



Marie Thwaites and Diana Temple.



The "Sevensiders"—Christchurch (winners) above, the Great Auks below.



BUSHMEN . . . and ASSOCIATES

Back: W. Scott, W. Waller, L. Donaldson, N. Thompson, C. Bidois, G. Barber, T. Te Kuru, D. Walker. Centre: B. Hakes, M. Wilson, G. TeHuia, A. King, M. Wall, T. Rotorangi, T. Wickman, T. Williams, J. Carter, C. Bromfield. Front: J. Wyllie, W. Blenkinsop, Syd Brown, D. Sutcliffe, L. Hahn, A. Jewell, R. Shirley, P. Mariu, B. Ormsby. On the ground: Nei Iria.



URGENT JOB

Fletchers were awarded the contract to rebuild the burnt-out Milford Hotel – See page 10.

